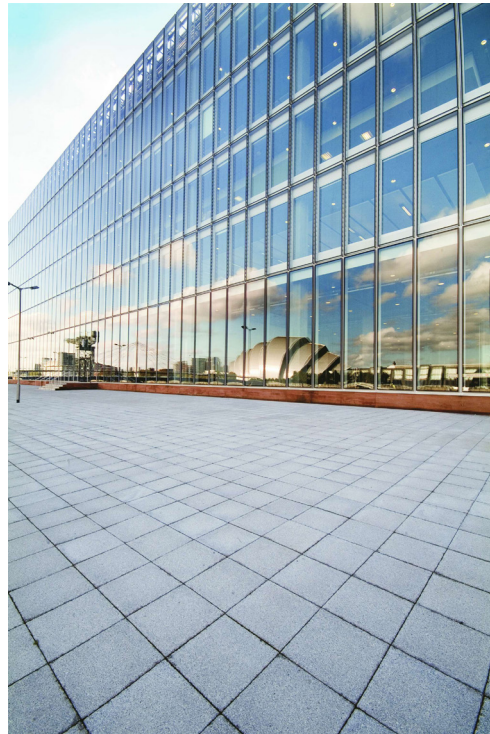


Conservation X Textured 400 x 400 x 50



Conservation X is a versatile paving collection that provides a wider choice of colours, sizes and textures to bring a modern and contemporary feel to spaces requiring greater design flexibility.

This range is known for its unique blend and mix of natural crystalline aggregates that are uniquely exposed to achieve a granite-look finish. Having a much lower carbon footprint than granite paving, Conservation X is manufactured in the UK to the best quality standard and contains up to 48% recycled material, making it both durable and sustainable.

Conservation X now comes in new sizes, including the popular linear format from our previous Celestia range, and an improved colour palette of Silver Grey and Charcoal and the new Blue Grey and Cream. Achieve your full-scheme design using a combination of both paving and block options and coordinating ancillary products, see the full Conservation X range here.

DESCRIPTION	
Manufacturing Process	Hydraulically pressed concrete
Base Raw Material	Pigmented & unpigmented concrete utilising specially selected aggregates
Governing Manufacturing Standards	All data where relevant to be established in accordance with BS EN 1339 : 2003
NBS Specification	Q25 315, Q25 315



Conservation X Textured 400 x 400 x 50

PHYSICAL PROPERTIES

Work Dimensions (mm)	398 x 398 x 50
Nominal Dimensions (mm)	400 x 400 x 50
Tolerances on Work Dimensions (mm)	Class 2 tolerances to all dimensions as standard, Length $\pm 2\text{mm}$, width $\pm 2\text{mm}$, thickness $\pm 3\text{mm}$
Abrasion Resistance (mm)	$\leq 23\text{mm}$ (Wide Wheel Abrasion Test)
Durability (Freeze-thaw)	$\leq 1.0 \text{ kg/m}^2$ as a mean with no individual value $> 1.5 \text{ kg/m}^2$
Material Density	2300 kg/m^3 (typically)
Slip/Skid Resistance (polished)	Mean polished skid resistance value (PSRV) : > 45
Slip/Skid Resistance (unpolished)	Mean unpolished skid resistance value (USRV) : > 45
Thermal Conductivity (K value)	Design data as defined to BS EN 13369
Bending Strength MPa	Characteristic bending strength of 4.0 MPa with no individual result less than 3.2 MPa
LRV Range	21.79 - 39.40

SPECIFICATION

Approx unit weight (kg)	18
Emission of Asbestos	No content
External Fire Performance	Deemed to satisfy when used for roofing
Reaction to fire	Class A1 when used for internal flooring
Installation	Laid in accordance with BS 7533-102:2025

SUSTAINABILITY

Breeam	These units can achieve an "A" rated system when used in conjunction with the correct sub-base components
Carbon Footprint	20

APPLICATION

Loading Classification	If you require further information please refer to the contact us section.
------------------------	--

SITE WORKS

Coverage	6.4
----------	-----

SUPPLY

Av. Pack Size m2	6.4
Units Per Pack	40
Av. pack weight (kg)	736

FURTHER INFORMATION

Cleaning & Maintenance	Available on request
Efflorescence	Any product containing cement during its early life may exhibit a temporary white discolouration known as efflorescence. This is not a product fault and will gradually disappear with exposure to natural weathering and trafficking
Weathering	It should be appreciated that with all products weathering and site conditions can cause shade variation to appear across the surface of individual units. This does not in any way affect the performance of the units and any such variation will diminish over a period of time as the product matures.
Product Evolution	The evolution of new product design is continuous and information is subject to change without notice. Customers should check with the supplier to ensure that they have the latest details. Marshall's reserve the right to amend the technical information as deemed necessary and in accordance with the relevant national and international standards without notice
Contact Us	For technical information on the design, specification and construction when utilising the product, contact Group Technical Services on 0370 411 2233

