

# NONSLIP STONE

COMPANY.

---

Head Offices: HALIFAX.



# NONSLIP STONE COMPANY, HALIFAX.

---

## "NONSLIP" STONE HAS NO EQUAL—OR SUPERIOR.

For City Street or Rural Road it is undoubtedly the best paving.

For a level path, or on *gradients* as steeply inclined as 1 in 6 it is perfectly safe.

"NONSLIP" Flags are hydraulic pressed, and thoroughly matured.

For *long service* they are unsurpassed.

---

Recently in a busy industrial town, some "NONSLIP" Flags were removed for the making of a new road. They had been down for twenty-three years—and a conservative estimate showed that more than 30,000,000 (Thirty Millions) of people had walked over them.

The wear was only 3/16 of one inch. These flags have been relaid on another path.

---

In Architectural Work "NONSLIP" Stone is very extensively used for—

### STEPS, LANDINGS, BALUSTRADES, &c.

The illustrations in the following pages are intended to show varied examples of the utility of "NONSLIP" Stone.

---

*Enquiries are welcomed, and no effort spared to maintain the high esteem in which "NONSLIP" is held by our very large circle of clients.*

---

LONDON OFFICE—  
65, VICTORIA ST., S.W. 1.

MANCHESTER OFFICE—  
8, EXCHANGE ST.

NONSLIP

WHITEHALL, LONDON. The heart of the Empire.

"NONSLIP" Flags laid here in 1905.

Inspect these Flags when next in London. You will recognise that there is no finer paving.

NONSLIP



WHITEHALL, LONDON.



NONSLIP

This illustration shews CLAPHAM COMMON STATION (City and South London Railway).

Messrs. MOTT, HAY & ANDERSON,  
Iddesleigh House,  
LONDON, S.W. 1, Engineers.

For this and other work for the same Company, upwards of 20,000 yards of "NONSLIP" Stone have been laid.

Railway Companies recognise that SAFETY FIRST is of vital importance; hence "NONSLIP."

NONSLIP



CLAPHAM COMMON STATION.



## MERSEY RAILWAY COMPANY, CENTRAL (LOW LEVEL STATION), LIVERPOOL.

On October 1st and 2nd, 1927, the platform at this station was entirely reconstructed,—and widened from twenty-two to thirty feet.

About 120 men were engaged, a number of whom worked continuously from Saturday morning to Monday morning.

We supplied "NONSLIP" Flags, cut to special radius, and had a man in attendance to assist in case of emergency.

The work was carried out under the superintendence of J. SHAW, Esq., M. INST., C.E.—Chief Engineer, the Contractors being Messrs. REDPATH BROWN & CO. LTD., MANCHESTER.

On October 5th, 1927, a letter was sent us by Messrs. PRECAST CONCRETE LIMITED, of HUDDERSFIELD, who were sub-contractors for concrete beams and paving.

This was quite unprompted by ourselves, and was greatly appreciated. We are kindly allowed to give *fac-simile* of same.

Dear Sirs,

Contract 333. Mersey Railway Co.

The job at the above was carried out and completed within the stipulated period last week-end, and we feel it incumbent on us to write and express our appreciation of the manner in which the special flags had been prepared.

By far the greater majority of these were laid without any trimming whatever, and the joints against the existing platform were exceedingly good, and we were complimented on this by the General Manager of the Railway Company.

We should also like to record our thanks for the manner in which your man Pearson worked whilst on the site. He gave us very considerable assistance, and materially helped in our programme.

Yours faithfully,

PRECAST CONCRETE LIMITED.

*[Signature]*  
MANAGING DIRECTOR

J. SHAW, Esq., M.I.C.E.,  
Chief Engineer.

REDPATH BROWN & CO. LTD.,  
MANCHESTER.

PRECAST CONCRETE LIMITED,  
HUDDERSFIELD.



LIVERPOOL MERSEY RAILWAY COMPANY, Central (Low Level) STATION.



NONSLIP

TWO VIEWS OF  
LIVERPOOL.



TOWN HALL, LIVERPOOL.



CHURCH STREET & LORD STREET, LIVERPOOL.

T. PEIRSON FRANK, M. INST. C.E., F.S.I.,  
City Engineer,  
LIVERPOOL.

NONSLIP

ROYAL EXCHANGE, MANCHESTER.



"NONSLIP" PAVEMENTS.  
J. B. L. MEEK, M. INST. C.E.,  
City Engineer, MANCHESTER.

Architects for ROYAL EXCHANGE,  
BRADSHAW, GASS & HOPE, F.R.I.B.A.,  
BOLTON.



## NONSLIP

**"Safety First"** is not a new policy. In 1904 "NONSLIP" flags were laid on a gradient of **1 in 8** at ST. ENOCH STATION APPROACH, GLASGOW. They are still in service, and have during this long period proved themselves worthy of their name. "NONSLIP" is the "Safety First" flag.



ST. ENOCH STATION, GLASGOW

## NONSLIP

KING GEORGE FIFTH BRIDGE, GLASGOW.

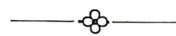


THOMAS SOMERS, M.I.C.E. City Engineer, GLASGOW.



NONSLIP

TWO VIEWS OF  
BUCHANAN ST., GLASGOW.



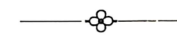
In wet weather or fine, "NONSLIP" Flags  
give a perfect foothold.



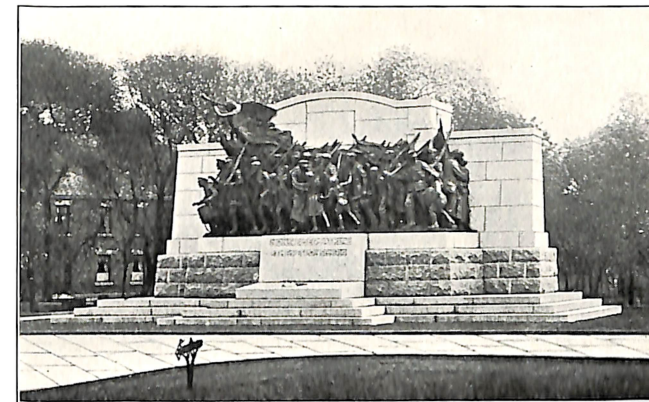
THOMAS SOMERS, M.I.C.E.,  
City Engineer,  
GLASGOW.

NONSLIP

RENWICK WAR MEMORIAL  
NEWCASTLE-ON-TYNE.



"NONSLIP" Flags in diagonal pattern,  
laid adjoining this beautiful Memorial.



W. J. STEELE,  
City Engineer,  
NEWCASTLE-ON-TYNE.





NONSLIP



WELLINGTON LANE, SUNDERLAND.

# “NONSLIP” FLAGS on a GRADIENT of 1 in 7.

*We much appreciated the following letter from the  
BOROUGH ENGINEER OF SUNDERLAND.*

*May 21st, 1925.*

DEAR SIRs,

Wellington Lane which has a gradient of  
1 in 7 is paved with “NONSLIP” FLAGS.

No complaints as to slipperiness have  
been received, and the flags are in every way  
satisfactory.

Yours faithfully,  
(Signed) T. P. COLLINGE,  
BOROUGH ENGINEER.

NONSLIP



# RECONSTRUCTION OF VALLEY BRIDGE, SCARBOROUGH.

H. W. SMITH, A.M.I.C.E.,  
Borough Engineer,  
SCARBOROUGH.

COODE, FITZMAURICE, WILSON & MITCHELL,  
Civil Engineers,  
9, Victoria Street,  
WESTMINSTER, S.W. 1.





NONSLIP



AVENUE WESLEYAN CHURCH,  
MIDDLESBOROUGH.

This Church was erected in 1907.  
The Architectural Dressings are  
entirely of "NONSLIP" STONE,  
and are in perfect condition.

NONSLIP



THE ROYAL PUMP ROOM.

J. J. KENNAN, C.E.,  
Borough Engineer & Surveyor,  
LEAMINGTON SPA.

TWO VIEWS OF  
LEAMINGTON SPA.



THE PARADE.



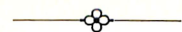
NONSLIP



WAR MEMORIAL, HARROGATE.

### THE WAR MEMORIAL.

Surround of "NONSLIP" Flags laid in 1922.



For Restful Spa or Thronged Mart

### "NONSLIP" STONE

is unequalled for SAFETY,

GOOD APPEARANCE,

and LONG SERVICE.



MONTPELLIER PARADE, HARROGATE.

### MONTPELLIER PARADE.

"NONSLIP" Flags laid on gradient of 1 in 8.24 in 1905, and still in perfect condition. This is the steepest gradient in Harrogate.

C. E. RIVERS, A.M.I.C.E.,  
Borough Engineer & Surveyor,  
HARROGATE.

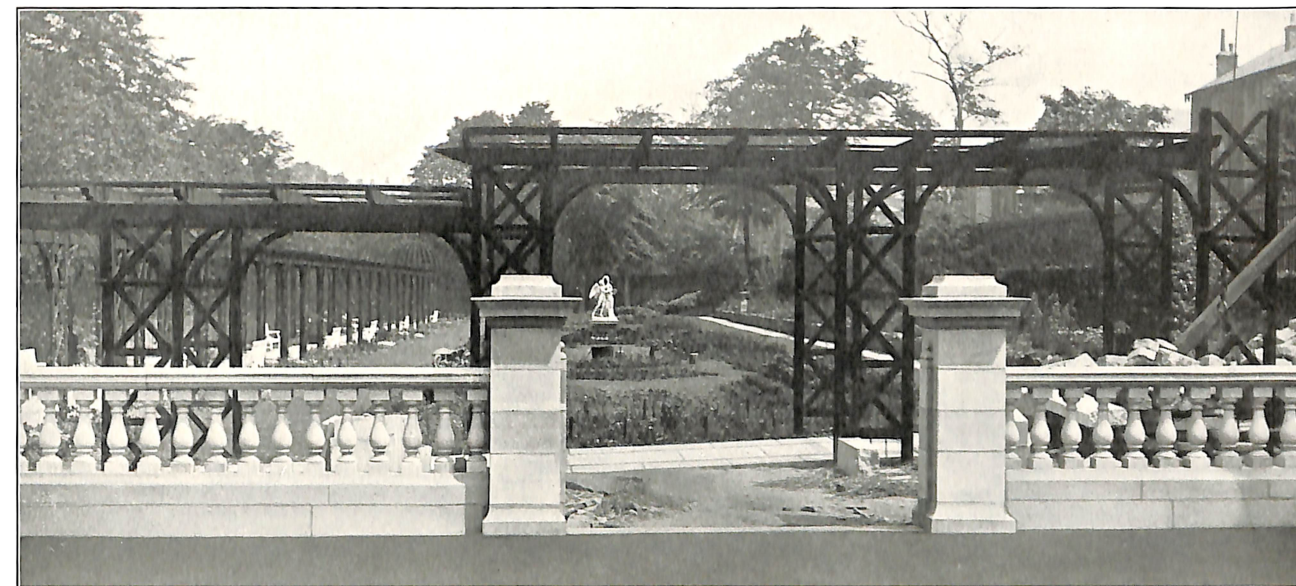
NONSLIP

You know "NONSLIP" Stone as a Footway Paving. It is just as admirable in Architectural work. Here is an example which is worthy of inspection.

C. E. RIVERS, A.M.I.C.E.,

Borough Engineer,

HARROGATE.



"NONSLIP" Stone Balustrade, ROYAL HALL GARDENS, HARROGATE.



NONSLIP



ARCADE ROYAL, HALIFAX.

**"NONSLIP" is the FIRST CLASS STONE  
for FIRST CLASS WORK**

*An esteemed client writes :*

*Feb. 18th, 1925.*

Dear Sirs,

*re ARCADE ROYAL, HALIFAX.*

The "NONSLIP" Flagging you laid for us 15 years ago, in two shades, at the above, has proved entirely satisfactory in every respect.

The gradient is 1 in 18, but nevertheless it is very comfortable and safe to walk upon, and pleasing to the eye.

It is a most successful pavement.

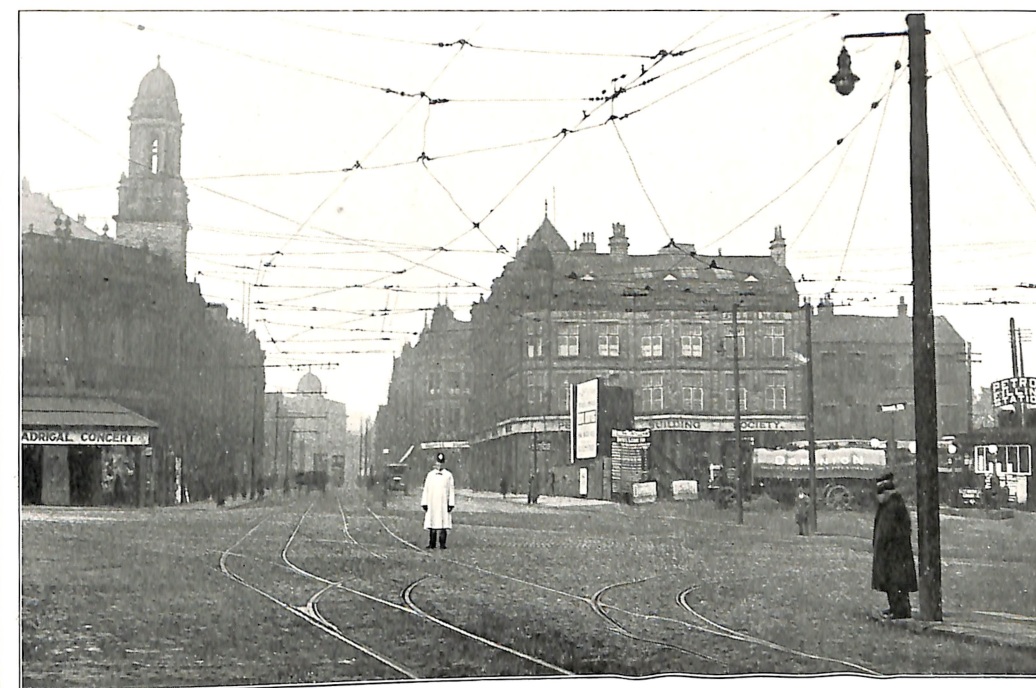
Signed,

CLEMENT WILLIAMS & SONS,  
Architects,  
HALIFAX.

NONSLIP

**A WORTHY RECORD.**—In 1903 "NONSLIP" Flags were laid at Wards End, Halifax. Recently a number of these flags were removed and replaced with Setts, for an Omnibus Crossing.

At a low estimate some THIRTY MILLIONS of pedestrians have passed over these flags, yet the wear is less than one quarter of one inch.

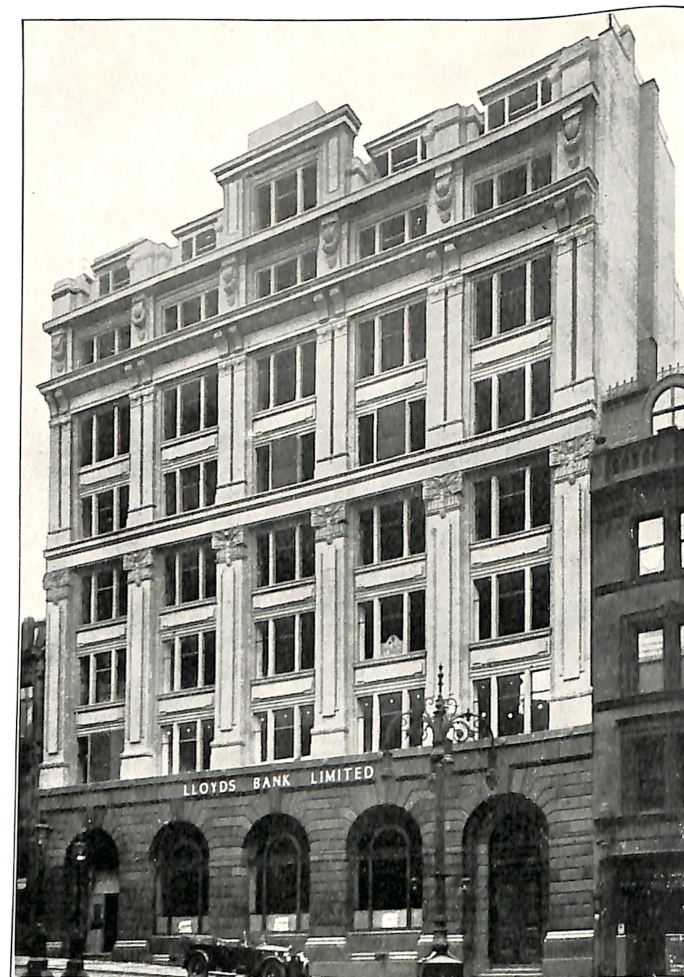


WARDS END and  
COMMERCIAL ST.,  
HALIFAX.

ALEC C. TIPPLE,  
Borough Engineer,  
HALIFAX.

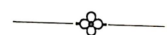


NONSLIP

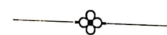


LLOYDS BANK LIMITED,  
BRADFORD.

"NONSLIP" STONE STEPS AND  
LANDINGS USED THROUGHOUT.



For Banks, Schools, and all public Institutions,  
"NONSLIP" Stone is safe.

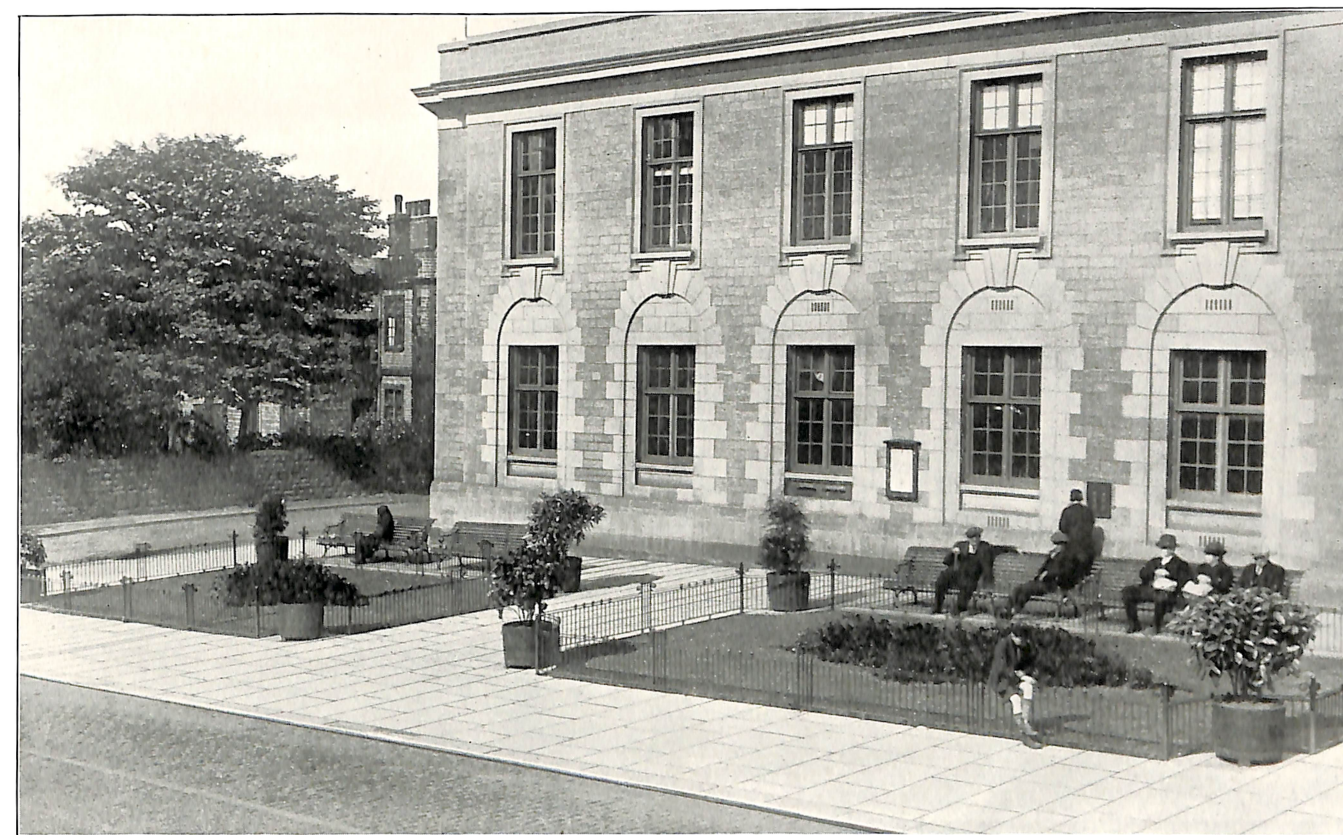


JAMES YOUNG & CO.,  
Architects,  
BRADFORD.

NONSLIP

"NONSLIP" STONE FLAGS.

H. DAWSON, M. INST. M. & C.E., Surveyor.



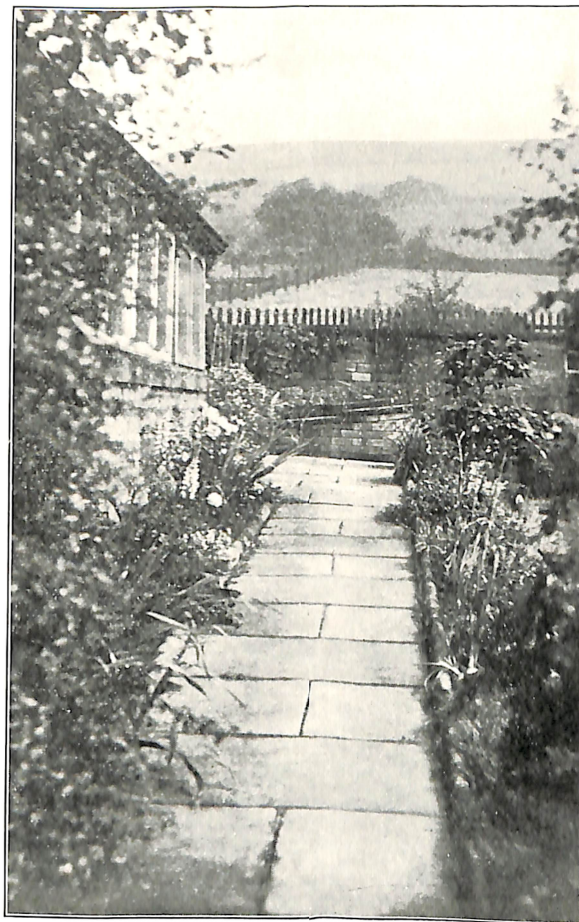
SHIPLEY POST OFFICE.



**NONSLIP**

**“NONSLIP”**

FOR  
THE  
GARDEN  
PATH



**“A Garden Path”**

(BRISTONE).



FOR ALL  
PATHS

**“NONSLIP”**

IS IDEAL.