

# news

## in Brief

### New Appointments



Mr. K. S. Davidson has joined the Board of Marshalls (Rotherham) Limited. He joined the Marshall Group as a Salesman in 1959 and three years ago became Sales Manager.

He is Chairman of the England and Great Britain

Squash team Selectors and former Yorkshire Champion.



Mr. J. H. Barton was appointed as representative for the East Midlands Area. John aged 24 is married with one child and is a great Do-it-Yourself enthusiast.

### CHELSEA FLOWER SHOW 1972

We shall be exhibiting all our latest products, including new non-slip flags at the Chelsea Flower Show in Royal Hospital gardens on Wednesday, Thursday and Friday, 24th, 25th and 26th May. Private viewing day will be Tuesday 23rd May. Opening hours are from 8.30 a.m. until 8 p.m. except on the final day when the show closes at 5 p.m.

We would like to make a date with all our customers, and a few new ones in Spring 1972.

### HOLIDAY ARRANGEMENTS—1972

**Easter:** The works will close on Friday p.m. the 31st March and re-open on Wednesday a.m. the 4th April (two days statutory holiday).

**Spring Bank:** The works will close on Friday p.m. the 26th May and re-open on Wednesday a.m. the 31st May (two days statutory holiday).

**Annual:** The works will close on Friday p.m. the 7th July and re-open on Monday a.m. the 24th July (ten days Annual holiday).

**September Break:** The works will close on Friday p.m. the 8th September and re-open on Wednesday a.m. the 13th September (two days Annual holiday).

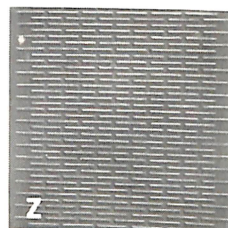
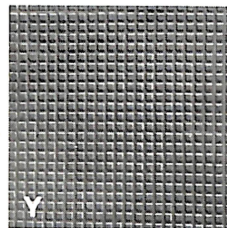
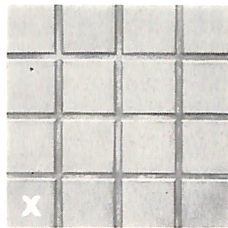
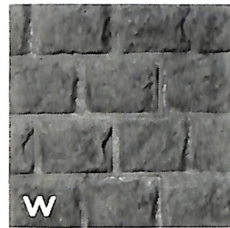
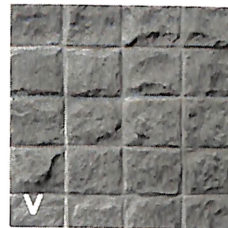
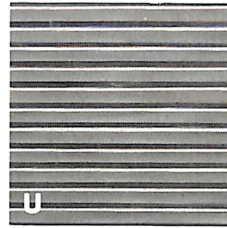
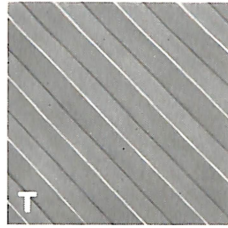
**Christmas:** The works will close on Friday p.m. the 22nd December and re-open on Monday a.m. the 1st January, 1973 (two days statutory holiday and three days Annual holiday).

## PRESSED TEXTURED PAVING

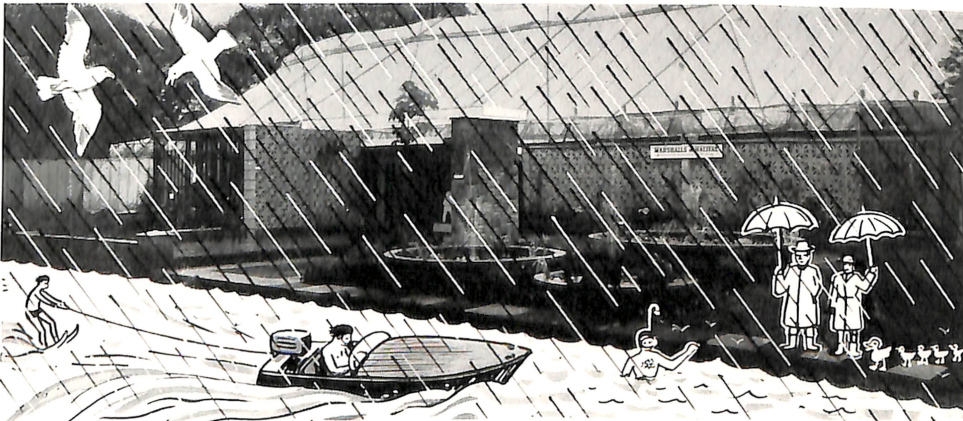
All pavings illustrated have non-slippery properties. These Flags can be laid in a variety of designs and used separately or together to form many pleasing patterns Where a good foothold is required on a sloping surface, type Z, Barfaced meets this requirement.

### SIZES AND TYPES

Pressed textured paving is manufactured to metric size 600mm x 600mm x 50mm  
Type T Slant Type X Squares  
Type U Rib Type Y Collander  
Type Z Barfaced  
Type V & W Setts are Manufactured 63mm thick only.



**VISITS IN 1971**—We have been pleased to receive visits from:  
The Institute of Highways Superintendents, Northern Centre. (photo above)  
The Borough Engineers Department, Dewsbury Corporation.  
The Members of Maltby U.D.C. The Federation of Master Builders, Maltby.  
The National Federation of Building Trade Employers, Scarborough Branch.

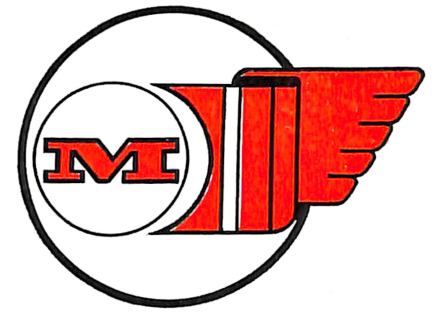


The Chelsea 'Shower Flow' 1971

<b>S. Marshall &amp; Sons Ltd.</b> Southowram, HALIFAX, Yorkshire. Tel: Halifax 63171 (10 lines) 0422-63171	<b>S. Marshall &amp; Sons Ltd.</b> Dunville Sand & Gravel Quarry Woodhouse Lane, Hatfield, DONCASTER. Tel: Hatfield Woodhouse 468 & 642	<b>S. Marshall &amp; Sons Ltd.</b> Ruddle Mill Lane, Stainton, Maltby, ROTHERHAM. Tel: Maltby 3151	<b>Marshalls (Teesside) Ltd.</b> Norton, Stockton-on-Tees, TEESSIDE Tel: Stockton 551616	<b>R. Wild Limited</b> Fletcher Bank Quarry RAMSBOTTOM, Lancashire Tel: Ramsbottom 2831	<b>Brookes Ltd.</b> HIPPERHOLME, Nr. Halifax. Telephone: 0422-22201
--	---	--	--	---	--

Designed by the Publicity Department of S. Marshall & Sons Ltd. and printed by N. Ashworth & Sons Ltd. Halifax.

# MARSHALLS OF HALIFAX



NEWSLETTER

No.6 APRIL 1972

A MEMBER OF THE MARSHALLS HALIFAX GROUP



## ANOTHER ADDITION TO OUR ACTIVITIES

### THREE YEARS OF PROGRESSIVE DEVELOPMENT

In 1969, as many of our customers are aware, Marshalls (Halifax) Limited, acquired the brickmaking and quarrying activities of Heaton & Co. of Rotherham. The additional company was renamed Marshalls (Rotherham) Limited and we immediately embarked on a development drive that is still continuing three years later.

Marshalls (Rotherham) Limited consists of two quarries and works at Stainton near Maltby, and Dunville on the outskirts of Doncaster. Both sections of the new company were thriving and active, and, of course, production has been stepped up considerably since 1969. Dunville Quarries produce building and concreting sand, gravel and ready-mixed lime sand mortar. Stainton produces crushed limestone for roads, concrete aggregates, concrete facing bricks, common bricks, and Glenstone split bricks. Whilst complying with the requirements of BS1180: 1944, Glenstone bricks are a very versatile product. They are manufactured in three finishes:— smooth facing bricks, pitched face bricks, and split bricks, and there is a choice of four different colours:— Stainton grey, charcoal grey, golden buff and marigold. Jumpers are also available in a choice of finishes—split or pitched face.

In spite of the wide range of first class products being manufactured by the quarries and works, we felt there was a need for thorough reorganisation, in order to bring Marshalls (Rotherham) Ltd., up to the production standards that customers have come to expect from our Halifax, Teesside and Ramsbottom works.

Since we took over, we have invested a considerable amount of capital in a large development project. Complete new plants have been built, and manufacturing processes have been streamlined and modernised. Quarry loading has been improved, and the installation of new screens has made it possible to grade limestone road products with far greater accuracy.

Production has been increased by the introduction of fork lift loading of split bricks and new cropping machines for split walling. Recently a batch mixing plant was installed which lead to much better control over production.

Great improvements have also been made to the delivery service. The purchase of crane unloading lorries means that orders arrive promptly and in first class condition.

For further information on sand, gravel and Glenstone bricks, please contact our office at Ruddle Mill Lane, Stainton, Maltby, Rotherham. Tel.: Maltby 3151.





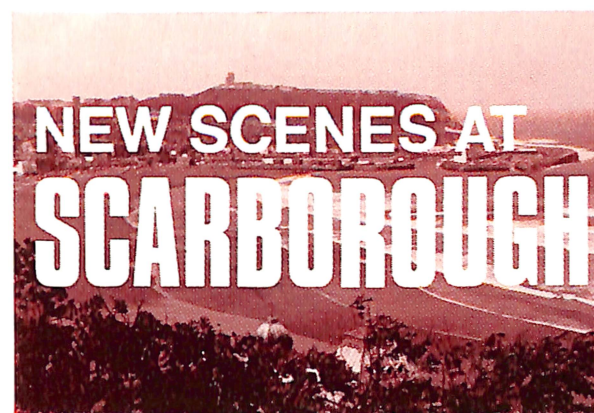
1971 was the 50th Anniversary of the Chelsea Flower Show, but unfortunately it was renamed aptly by one visitor—"The Chelsea Shower Flow". It was the most appalling weather that we have ever experienced at Chelsea, and, of course, the attendance figures were badly affected. However, we were very pleased to welcome many of our old friends, who braved the weather, and we feel sure we have made some new friends.

The stars of our show were new Nonslip (Reg) Paving, & new Super Screen Walling, manufactured by hydraulic pressure.



## INTERNATIONAL BUILDING EXHIBITION OLYMPIA

Our exhibition at Olympia last November was a great success. We were fortunate to acquire a more prominent position in the Grand Hall, and as a result drew a large number of visitors. All Marshalls' products on display created a great deal of interest and many new accounts were opened. Since the exhibition export orders and enquiries from abroad have been received. The export trade is a completely new venture for us, but as Common Market membership draws nearer, we look forward eagerly to a wider market in Europe.



In our No. 3 issue of April, 1970 we featured the Southport Municipal Garden Redevelopment Scheme. Now on the east coast of the country we have been most pleased to co-operate in the Aquarium Top scheme for Scarborough Corporation.

As long ago as 1938 the Scarborough Council recognised that the Aquarium Top site required redeveloping, and even at this time it was envisaged that car parking facilities would be necessary.

In 1965 approval was given for a general design to be prepared by the Borough Engineer and Surveyor, Mr. V. Forshaw, M.Eng., C.Eng., M.I.C.E., F.I.Mun.E., A.M.I.W.E. Tarmac Construction were awarded the contract for detailed design and construction, and work commenced in 1968. Now, in 1971, beneath the towering iron bridge built to improve pedestrian access for Victorian gentlefolk to the Spa, the dual carriageway incorporating a roundabout and paved areas provides a setting for holiday makers to sit amongst the flower beds with a wonderful view overlooking the sea. Below them, underground, is a vast car park, public conveniences, child reception centre, first aid centre, offices for beach staff and sub-ways to the promenade. Marshalls reconstructed stone products were chosen almost exclusively to blend in with the natural stone pillars of the bridge and general surroundings. All retaining walls were constructed in York Stone Tudor using a pitched face jumper with outstanding effect. Roundabout perimeter walls and raised flower beds were constructed in Buff Marshalite and Perfecta rubbed top buff flags were used for the paved areas.

