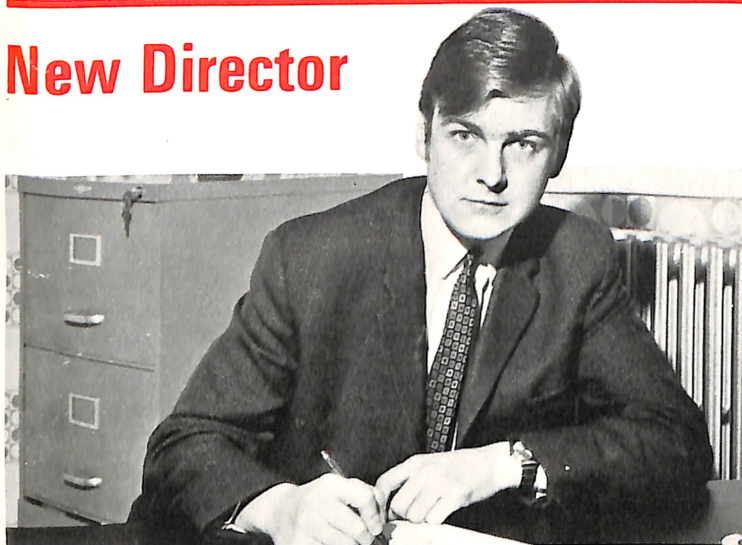




Presentation made by Mr. D. H. Marshall of S. Marshall & Sons Ltd., to a long service employee on his retirement. Mr. Fred Ingham commenced work with S. Marshall & Sons Ltd., in 1937, 35 years ago, at our Brookfoot Works. In those days we had one flag press and about ten Employees.

Fred has seen this grow to about 500 employees and fifteen presses. He has worked in various capacities and described himself as a 'General' Factotum'. The Directors and his colleagues all wish him well in his retirement.

New Director



Mr. J. D. Marshall, aged 28, has been appointed a Director on the Board of Marshall's (Halifax) Limited. He was educated at Malsis School, Cross Hills and Work-sop College. After leaving school he spent some time

studying concrete technology and concentrated on the production of concrete products within the Company. Married with two children, his hobbies are golf and an occasional game of squash.

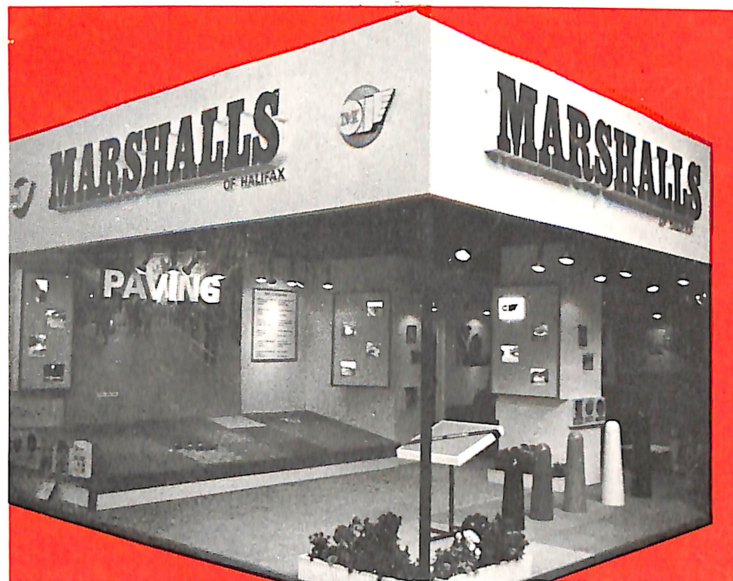
New Appointment

David Young age 32 married with two sons, joined us as Works Manager at our Brookfoot Works. Mr. Young came to us from Scotland after fourteen years in the Industry. Another keen round tabler.

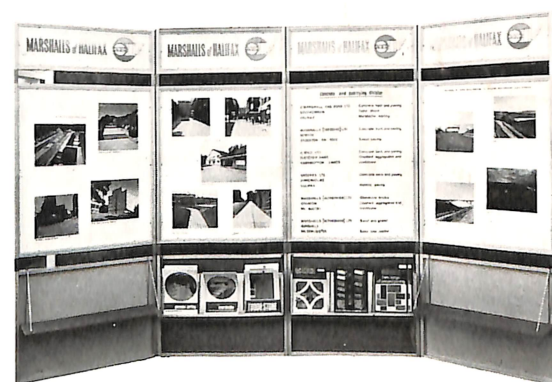
PUBLIC WORKS EXHIBITION 1972

Great interest was shown in our Stand at the above exhibition last November. This year we featured our various types of paving such as

Anti-Pedestrian Paving, Pres-sed Textured Paving, Perfecta Paving and our New Nonslip Paving. Bollards for Pedestrian Precincts were also on show.



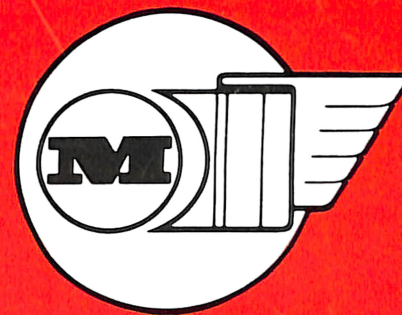
Portable Display Stand



The above photograph shows our portable Display Stand which we have used at various conferences such as the Institute of Highway Superintendents Annual Conference, Edinburgh. It displays photographs of our products in situ and, as considerable interest in the stand has been ex-

pressed by visitors to our office, we have decided that should any of our customers care to borrow the stand we shall be only too pleased to loan it for limited periods. Should you be interested please do not hesitate to contact K. S. DAVIDSON - Sales Manager.

MARSHALLS OF HALIFAX



NO.8 APRIL 1973

Marshall's Halifax Group

a new company

Marshall's (Halifax) Limited have acquired the share capital of Craig Brothers Limited from Northern Lime and Concrete Products Limited, who are a subsidiary of London & Northern Securities Ltd. Craig Bros. Ltd., operate a concrete works at Sacriston in Durham and their subsidiary, Craig & Henderson Ltd., operate a concrete works at Kelso in Southern Scotland. Craig Brothers Ltd., was first established in the latter half of the nineteenth century, as builders, contractors and brick makers. In 1920 Mr. Douglas Craig and his two brothers joined the firm, expanding the activities to include quarrying of stone and gravel, bulk excavation, hired transport and the supply of precast products, together with the introduction of red colliery shale as a quick cheap medium for road filling. It was in 1922 that the demand for road kerb and paving flags presented an opportunity for the development of the precast side and the Works were established on the site of the disused brick yard on Findon Hill.

In 1942 the brothers dissolved partnership after which time the business was carried on by Mr. Douglas Craig alone until 1955, when he was joined by his daughter and son-in-law, Mr. & Mrs. Henderson. A Limited Company was formed in 1956. In 1960 the first Fielding and Platt slab press was installed and within the next three years a further two single and one Rotary press were added.



In 1964, the Company was one of the first to join the London & Northern Securities Group of Companies and the following year, the shale, transport and plant hire interests were transferred to another Company within their organisation, leaving Craig Brothers Limited to develop the concrete side. In 1968, it was decided to form a subsidiary Company, Craig & Henderson Limited, and a plant was erected at Kelso to supply materials to the Borders and Southern Scotland.

These two concrete works will make a very useful addition to the operations of the Concrete and Quarrying Division of Marshall's (Halifax) Limited, and will enable some geographical extension of their activities.



S. Marshall & Sons Ltd., Southowram, HALIFAX, Yorkshire Tel: Halifax 0422-63171 (10 lines). **S. Marshall & Sons Ltd.**, Ruddle Mill Lane, Stainton Maltby, ROTHERHAM Tel: Maltby 3151. **S. Marshall & Sons Ltd.**, Dunsville Sand & Gravel Quarry, Woodhouse Lane Hatfield, DONCASTER Tel: 840468. **London Office** S. Marshall & Sons Ltd., 319 Ballards Lane Finchley, LONDON N.12 Tel: 01-446-0993. **Marshall's (Teesside) Ltd.**, Station Road, Norton, STOCKTON-ON-TEES, Teesside Tel: Stockton 551616. **R. Wild Ltd.**, Fletcher Bank Quarry, RAMSBOTTOM, Nr. Bury Lancashire Tel: Ramsbottom 2831 (3 lines). **Brookes Ltd.**, HIPPERHOLME, Nr. Halifax Tel: 0422-22201. **Craig & Henderson Ltd.**, Pinnaclehill Industrial Estate, KELSO, Roxburghshire TD5 8DW, Tel: Kelso 2584. **Craig Brothers Ltd.**, Concrete Works, Findon Hill, SACRISTON Durham Tel: Sacriston 710345 & 710246.

Disaster at Teesside

Works at Norton severely damaged by fire on 9th

Our Teesside Works at Norton were severely damaged by a spectacular fire on the night of 9th September, 1972.

A great pall of smoke hung over the district, flames were visible for miles around, and the fire could be seen from adjoining towns.

Although a night shift was working, fortunately there was nobody in the building where the fire started.

The Fire Service did a magnificent job. Fire engines from Stockton, Middlesbrough and Thornaby were quickly on the scene. But they were desperately hampered by lack of water; hose pipes had to be laid for half a mile. However, there were static water tanks close to the works and the firemen were able to pump from these. They tackled the fire from two sides, but it spread with amazing rapidity, no doubt assisted by exploding gas cylinders.



Wrecked new building which was under construction

One great danger was averted by keeping a tank containing 2,000 gallons of diesel fuel cool. Three fork lift trucks and a van were saved from a damaged building. But the engineering shops, part of a storage block and another building under construction were completely gutted. Damage was estimated at many thousands of pounds.

Fortunately no employees have been thrown out of work but it certainly interfered with production.

Due to superhuman efforts by the employees under the direction of Mr. G. Scott, production had started again in the Pre-cast Section by 5th October and the Saws were in operation by 9th October.



A further shot of general destruction



The gutted Joiners shop



The Engineering shop

Marshalls (Rotherham) Ltd

New Plant Installed

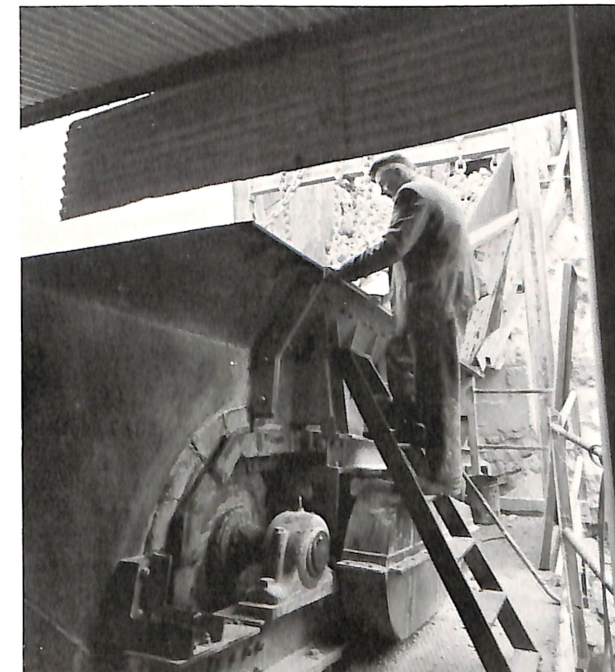
250-ton per hour Limestone Screening and Stock Piling Plant



The old quarry plant was some fifteen years old. Over the years it had been added to and modified to meet the changing demands of the roadstone industry, but recently it became unable to produce the required grades and tonnages of roadstone, together with the much increased tonnages required for the 'Concrete Products' section of the works.

With the growth and future expansion of the 'Concrete Products' section in mind, it was decided to design a purpose made quarry plant, capable of producing sufficient tonnage of Limestone Dust of consistent grading to meet the increased demand of the 'Glenstone' range of Split Bricks and Facing Bricks. The new Quarry Plant was to be also capable of providing the substantial tonnages of the various grades of concreting and roadstone aggregates. Versatility was a keynote of the design.

The new plant was commissioned at the beginning of November 1972, and has many advantages over the old quarry plant. Stock piling of the separate grades of stone is by means of over 1,000 ft. of conveyors which means there are no bunkers to empty - a great saving of both manpower and vehicles. The throughput of the new plant is 200 tons per hour of limestone. Run-of-Quarry-



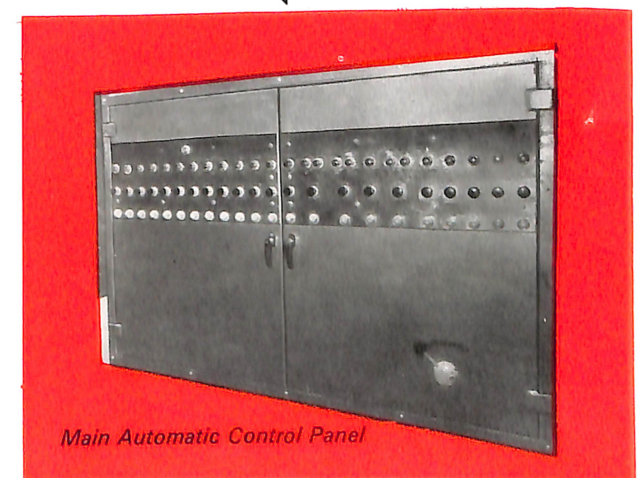
— $\frac{3}{16}$ " Limestone Dust is conveyed from here into the Concrete Works, — $\frac{3}{4}$ " + $\frac{3}{16}$ " Limestone is discharged on to stockpiles for a nearby ready-mixed concrete plant. + $\frac{3}{4}$ " over-size from the secondary screens is re-circulated through the conveyor system to a tertiary Kue-Ken gyratory crusher for producing further — $\frac{3}{16}$ " Limestone Dust.

The entire plant is controlled by two men and incorporates the latest type of centralised control panel.

There are electronic systems for controlling the flow of materials in the plant and the whole plant is fully sequenced interlocked for safety. The new quarry plant is a great step forward into the technological age for Marshalls.

Feed to Primary Crusher

Stone is fed through a Baxter primary jaw crusher, then conveyed to a primary screen house. Here the stone is segregated by two screens. Various grades of roadstone are discharged by conveyors on to stockpiles ready for loading to lorries and concurrently stone is discharged into a Pegson secondary gyratory crusher adjacent to the primary screen house. The stone from this secondary crusher is then conveyed to a secondary screen house, which has two screens for further segregation.



Main Automatic Control Panel