

Newspaper of S Marshall & Sons Ltd Part of the Marshalls (Halifax) Group

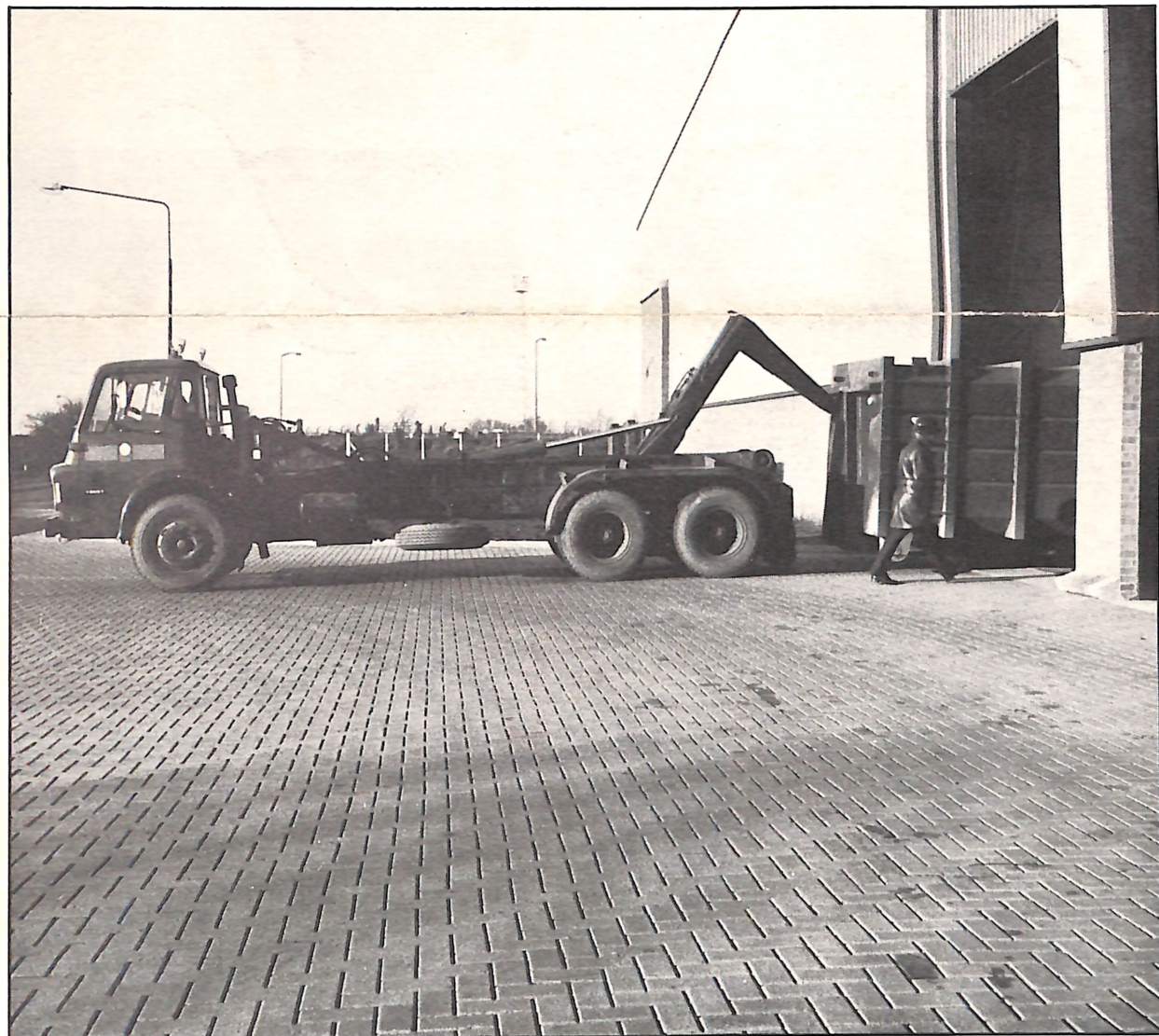
## Block Paving used at South Yorkshire refuse reclamation plant

**In the field of refuse reclamation, South Yorkshire County Council are now front runners.**

Their newly commissioned recycling plant at Kirk Sandal, Doncaster is the first of its kind in the country, and incorporates many new techniques intended to conserve and re-use valuable resources.

Designed by the County Engineer's Department, Major Works section under the direction of Chief Architect, D K Pumell, RIBA, the £1m project incorporates Concrete Block Paving supplied by Marshalls' Rotherham Works. Some 2700 sq metres of block paving form a "picture frame" surrounding the new building,

providing a heavy duty forecourt area taking concentrated traffic from access roads into lorry loading bays. A further 500 m<sup>2</sup> blocks pave car parking bays in other areas of the site. The 200 x 100 x 80mm thick Brown blocks are laid in herringbone pattern giving maximum resistance to the tearing effects



caused by acceleration, braking and sharp turning of vehicles. Commenting on the use of block paving, Project Architect Peter Buckley, RIBA, said "The large numbers of heavy vehicles we anticipated using the site made us look long and hard at pavement design. A surface was needed which would stand up to constant heavy loads over long periods, with the minimum of maintenance. We feel block paving is ideal for the job".

The plant, which was officially opened in December 1979 is one of the most advanced in Europe, and was built in conjunction with both the Department of the Environment and the Department of Industry.

It aims to recover many of the valuable materials lost in more conventional forms of waste disposal. Many of the elements recovered will be directly re-usable, as substitutes for traditional raw materials.

**Block Paving takes the load at the recently completed waste re-cycling plant at Kirk Sandal, Doncaster.**

## Contents

### Chelsea

Pages 2 - 3

This most famous of English Flower Shows marks the start to the horticulturists brief but hectic season. Marshalls exhibition stand previewed.

### Letters to the Editor

Page 2

Requests for product literature come from all over the world. Here's one from darkest Africa.

### New literature

Page 3

Four new leaflets describe additions to the Marshall product range.

### Punch lends a hand

Page 3

A pertinent cartoon, care of Punch Magazine.

### Product Displays

Page 4

A little bit of thought produces surprising results.

### Marshall mechanic in Olympic Reserves

Page 4

High spot in career for basket ball enthusiast.

### Posters

Page 4

Saxon and Pastel Paving Posters for Stockist display.

## Charnwood & Pastel join decorative paving range

**Two new additions to the already comprehensive range of paving products were announced recently.**

Launched on the success of 'Saxon' textured paving, new 'Charnwood' and 'Pastel' Pavings, manufactured by similar techniques, offer the Architect, Landscape Designer as well as DIY enthusiast even greater scope for the creation of interesting paving schemes. Charnwood, marketed directly by Marshalls (Midlands) Ltd.

Nottingham Works, is available in three colours and two sizes, Buff, Red and French Grey, in both 450 x 450 x 50mm and 600 x 600 x 50mm sizes. They are distributed polythene shrunk wrapped in quantities of 25 per pack. Pastel Paving, from Marshalls (Teesside) Ltd. offers a wider choice. Four colours, Coral Pink, Pale Amber, Light Gold and Silver Grey are manufactured in 450 x 450mm size, with 450 x 225mm and 225 x 225mm in Light Gold only. All are

38mm thick. 600 x 600 x 50mm pavings are also available in all four colours to special order. Pastel Pavings are also distributed polythene shrunk wrapped, but in quantities of 50 per pack. Both Charnwood and Pastel Pavings are hydraulically pressed from top quality natural aggregates. They have a coarse texture surface which gives a pleasing gritstone appearance and provides an excellent non-slippery surface.

They are suitable for paths, patios, pool surrounds and general use as well as for commercial and landscape projects. Descriptive colour literature containing details on general laying techniques are available on request.



# Chelsea 1980

## opens spring with a flourish

### Chelsea Flower Show heralds the beginning of 6 months intense activity in the horticultural world.

Spring has sprung and amateur gardeners, professional growers and landscape specialists alike, look forward to their busiest period. Garden centres see the buying public flock through their gates in an endless tide stripping nurseries, stock yards and showrooms of anything even vaguely connected with the garden.

This is why Chelsea is such a significant event in the calendar, and why months of careful planning go into ensuring the show remains the institution it has justifiably become.

To exhibit at Chelsea ensures large scale exposure and to capitalize on this captive audience (averaging some 60,000 a day over the 4 day duration), Marshalls have decided to again attend the show, this year being held from 20th to the 23rd May, as usual in the grounds of the Royal Hospital, Chelsea.

On display will be the familiar faces of Marshalite and Tudor Stone Walling, Pennine Paving and Superscreen Screen Walling, together with Saxon and Perfecta Pavings which made a significant impression in the market place during 1979.

The stand this year is a prime corner site occupying some 1200 sq. ft. at the junction of Main Avenue and Main Way.

The 1980 design attempts to create a number of separate areas within limited overall boundaries, defined by changes in the levels, paving textures and colours.

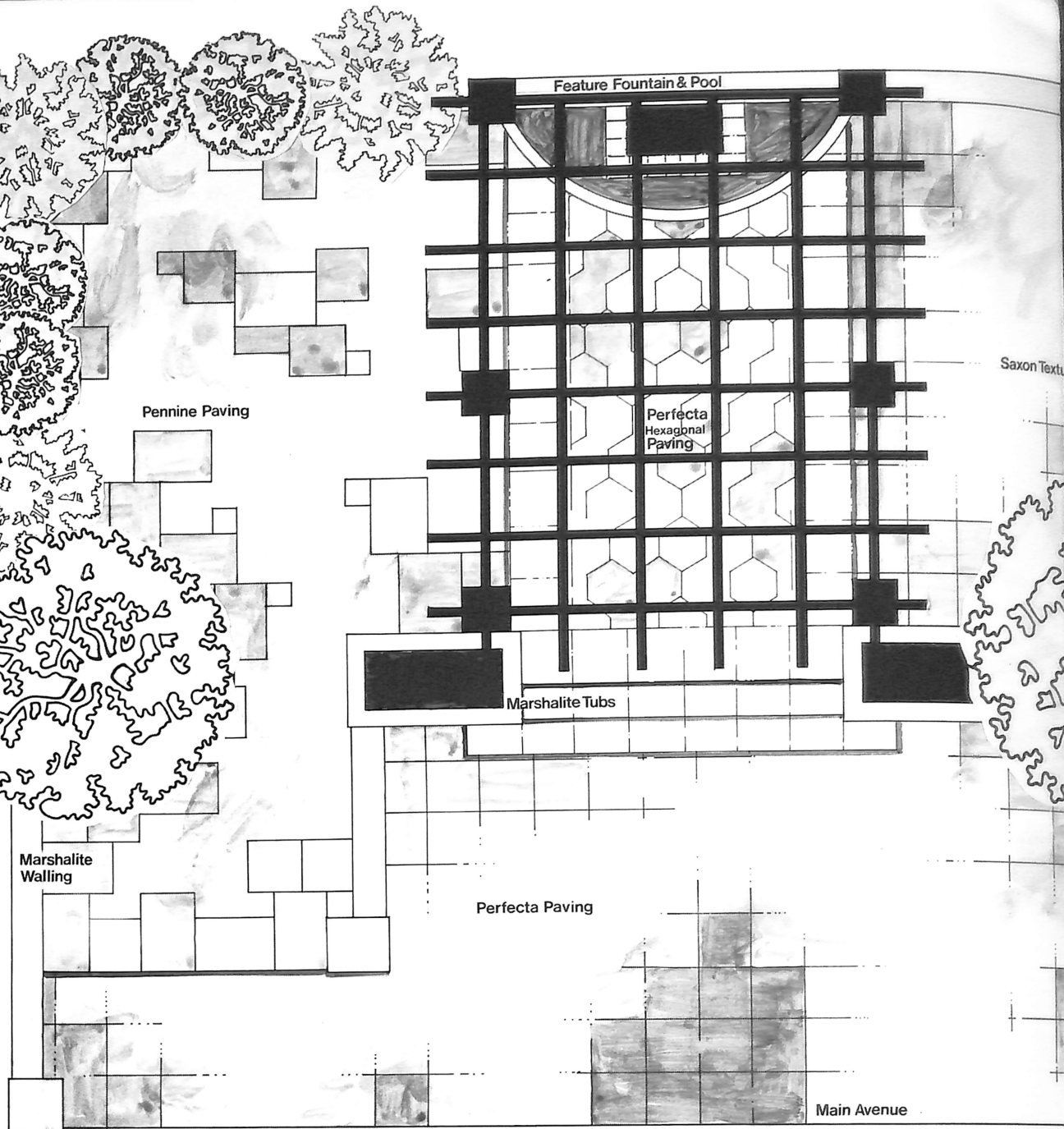
The main feature of the stand is a series of steps set back from Main Avenue and leading on to a central area enclosed within a pergola supported on Marshalite pillars. At the back of the stand the pergola frames a feature-fountain set into a back drop of screen wall blocks.

The two wing areas of the stand, surrounded by walls of Marshalite and screen blocks as well as cypress trees, are paved in Pennine on the one hand and Saxon, on the other.

A frontal 'shop' area will provide a useful point at which literature can be obtained easily by the passing visitor.

Owing to the sheer volume of visitors to the 1979 show (the Royal Horticultural Society calculates some 244,000 people passed through the turnstiles, compared with 214,000 in 1978), the RHS have decided that opening times will be extended to accommodate the expected influx. The gates will therefore open at 8.00 a.m. and close at 8.30 p.m. (previously 8.30 a.m. - 8.00 p.m.).

Hopefully this will spread the load more evenly over the four days and bring back the less hurried atmosphere of former years. So, with prospects looking good for another eventful Chelsea, hopes are set high for a busy and successful, but all too brief season in the gardening world.



**Plan above right**  
The 1980 Marshalls Chelsea flower show exhibition stand occupies 1200 sq. ft. at the junction of Main Avenue and Main Way.

The main features this year include a series of steps set back from the Main Avenue leading on to a central area enclosed within a pergola supported on Marshalite pillars. The pergola frames a feature fountain set into a backdrop of screen wall blocks.

**Photographs above right and far right.** Last year's busy Chelsea which saw almost a quarter of a million visitors in the four day event.

## Pennine Paving ideal for home and jungle improvement

With a national advertising campaign promoting paving and walling stone to all and sundry, it would be reasonable to expect replies and enquiries from most of the large cities and towns in the country, not to mention from the many small villages which make up the British landscape. Even clip coupons and letters from far flung

extremes of Land's End and John o' Groats would barely raise an eyebrow, but the line must be drawn somewhere, surely no one could have forseen an enquiry such as this:

Dear Sir

With my great compliment which sound me a happiness to write you people this few lines of words. I hope that you in good condition of health.

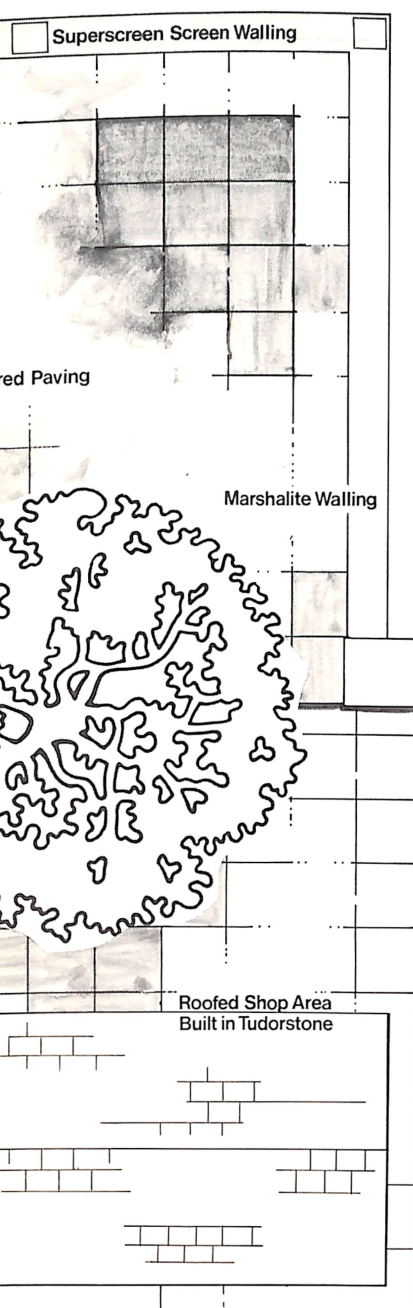
Please I want you you to send me one of your colour brochure on Pennine Paving if you send me the colour brochures I will be one of the happiest boy on earth. Sir I beg to close it here while waiting for early reply.

Yours faithfully  
Pius E Izevbigie

P O Box 371  
Benin City  
Bendel State  
Nigeria







# New sales literature from Marshalls

**1. Cromwell Coursed Walling**  
Launched some months ago, Cromwell is a reconstructed stone designed for use in areas where coursed random block length natural stonework is the traditionally accepted building style. The 4 page A4 colour leaflet gives full details on availability, suitability and performance and will provide both architect and builder with a valuable source of reference.

**2. Pastel Paving**  
A new textured paving from our Teesside factory is described in this 2 page colour leaflet.

**3. Layout Sheet for Pastel Paving**  
Something to help the DIY enthusiast plan a patio or courtyard. Showing 6 different laying patterns for Pastel Paving, this black and white design sheet will help both novice and experienced alike.

**4. Charnwood Paving**  
Like its sister product Pastel Paving, Charnwood is a hydraulically pressed textured paving (both are described elsewhere in this newsletter). Manufactured at our Midlands works, Charnwood Paving, its colours, sizes and uses are detailed in a colourful A4 two page leaflet.

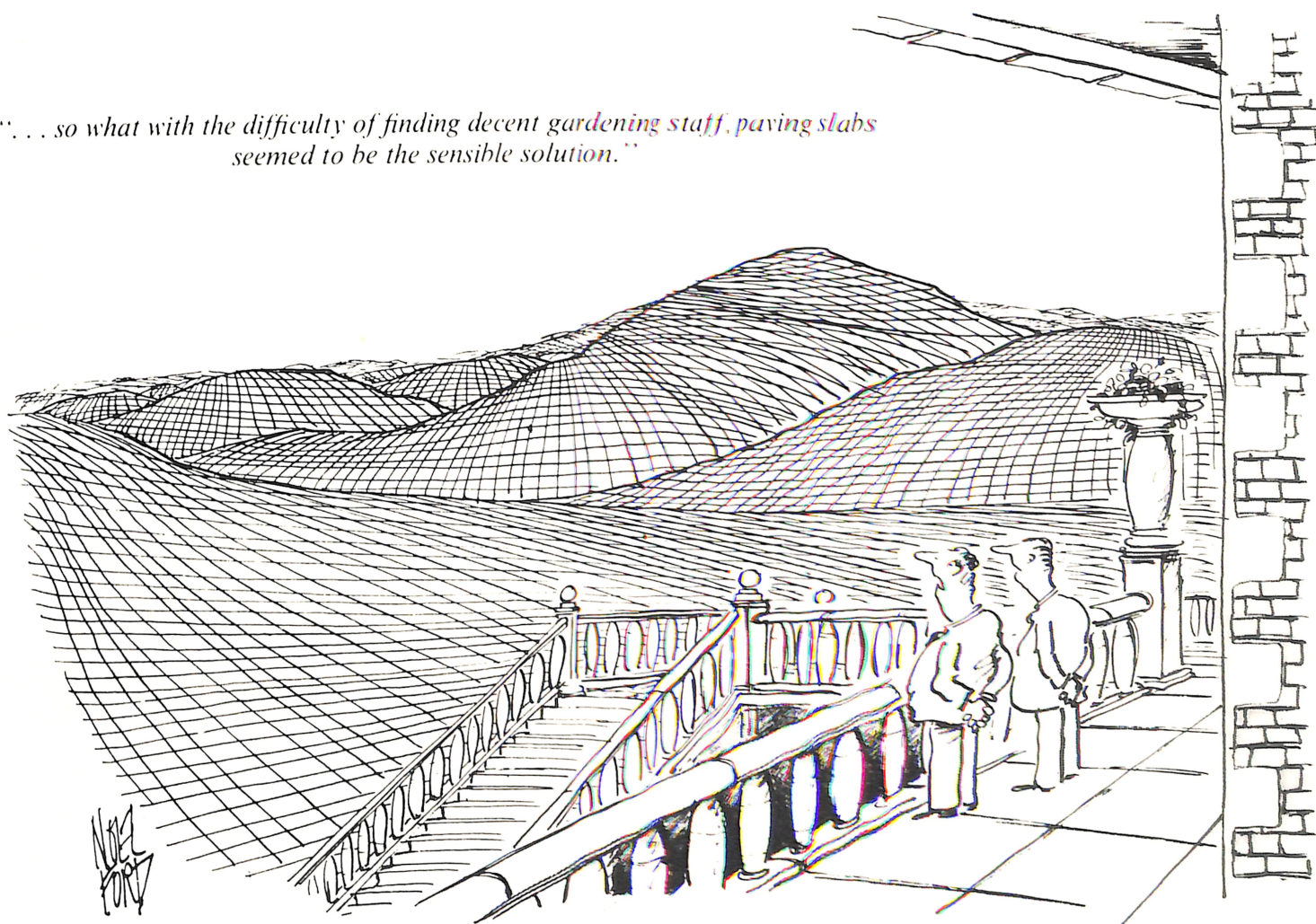
All four new leaflets are available on request.

**New sales literature from Marshalls**  
Top to bottom.  
Charnwood Paving  
Pastel Paving layout sheet  
Pastel Paving  
Cromwell Coursed Walling



Cartoon reproduced by courtesy of 'Punch' Magazine and Noel Ford.

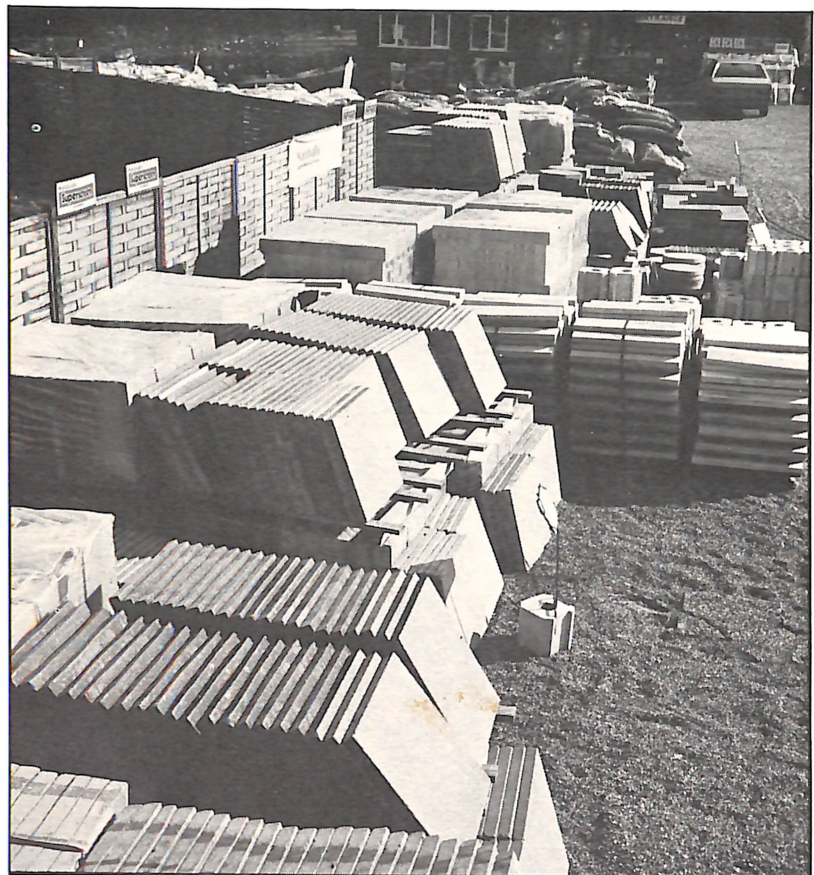
*"... so what with the difficulty of finding decent gardening staff, paving slabs seemed to be the sensible solution."*



The above is an exact reproduction of a letter received from an apparently eager DIY enthusiast. Perhaps a U.K. Builders' Merchant will open a Nigerian branch? Enquiries for full loads only to...



# Display Keep it simple make it work!



With the busy but all too brief season now well under way, product promotion and display becomes a topical subject. The Autumn/Winter 1979 edition of Marshalls News gave advice on how best to construct a display of paving and walling making use of available space, sunny aspects and complimentary products etc. Doubtless most Builders' Merchants and Garden Centres will agree that a simple layout makes an excellent point of sale display. However, where space is at a premium or where layout of yard is such that a permanent "exhibit" is impractical, an acceptable alternative can still be made, which does justice to the product without tying up valuable selling space. Palletisation of paving and walling, originally intended to ease transport and handling difficulties, also lends itself to quite attractive presentation when arranged thoughtfully. Taking a wall or fence as a backdrop, full pallets can be opened and positioned in such a way as to gain maximum visual impact.

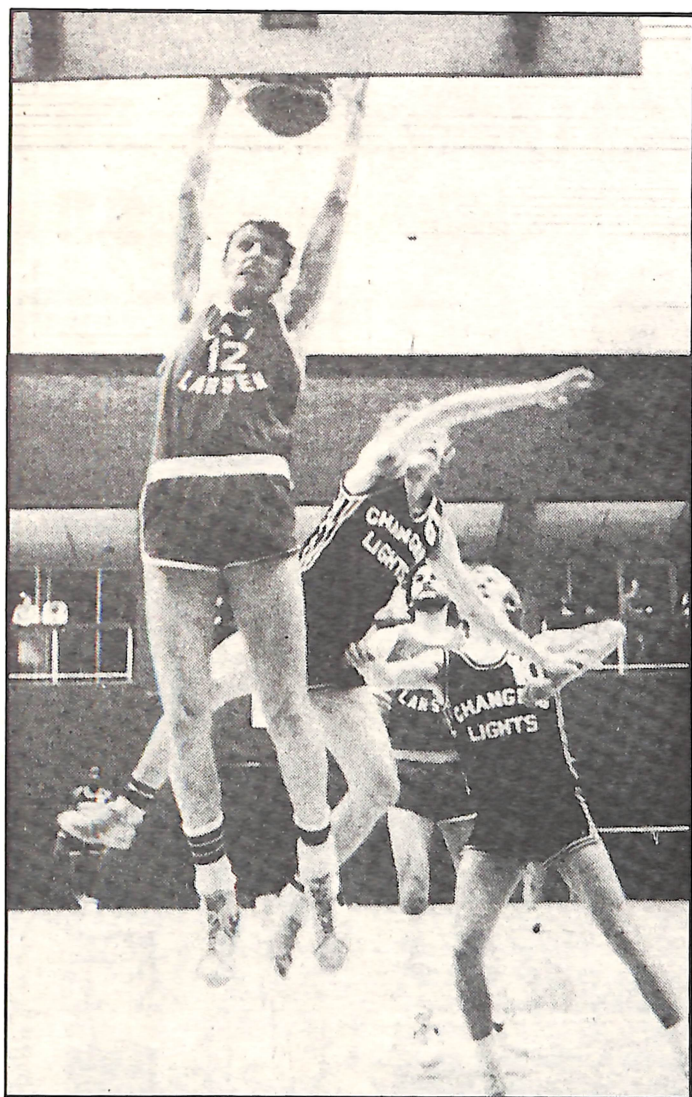


Customers can see the products, they can get in and around them to make comparisons and see just what they are buying. Polythene wrapping keeps materials clean and dry and need be removed only as required. And there is one important point to remember. In a display of this kind, everything on show is saleable.

Thoughtful layout of prepacked paving and walling creates an impressive display. Photographs by kind permission of Wilmslow Garden Centre, Cheshire.

Nothing is tied up unnecessarily. Colour and texture is what is on offer. Show it off!

## Marshalls' mechanic joins Olympic basketball reserves



Basketball in Leeds received a massive boost earlier this year when Leeds Athletic Institute's 6ft. 9in. centre David Berry — a complete novice just three years ago — was named as reserve to Great Britain's Olympic Games squad. Berry, 22, a foreman mechanic at Marshalls Hipperholme, Halifax works, was one of the original members of the Leeds Centre of Excellence basketball squad and his progress since taking up the

**6' 9" Dave Berry (No. 12) baskets 2 points on his way to a place in the England squad.**

game three years ago has been meteoric. He has already trained with the England squad, went on tour to Yugoslavia and Greece last year, and his chances of making the trip to Moscow — or elsewhere — are better than his "reserve" tag suggests.

## Posters reinforce stockist support

New full colour posters promoting Saxon Paving and the recently introduced Pastel Paving are now available on request. The 23" x 16" posters are printed on waterproof synthetic paper and are intended for use both indoors and outside.



For more details on the complete range of Marshalls Garden Paving and Walling Contact: S Marshall and Sons Ltd., Southowram Halifax HX3 9SY West Yorkshire Tel: Halifax (0422) 57155

The British Party, which is being coached by American Norman Sloan, will have a three-week training session at North Carolina University before moving on to the all-important pre-Olympic tournament in Switzerland on May 6. There Britain will be up against

Finland, Hungary, Spain and Poland and must win their group to qualify.

**Marshalls**  
S Marshall & Sons Ltd  
Southowram  
Halifax HX3 9SY  
West Yorkshire  
Telephone: 0422-57155