

Marshall's

News

SPRING
SUMMER '84

Published for stockists, specifiers and users of precast concrete products

QUARTER OF A MILLION BEDDED WHILE LUTON SLEPT ON

CONCRETE BLOCK paving is set to take off for airport use with the completion of the turning circle at the end of Luton Airport's runway.

A quarter of a million blocks were laid in the 5,000 square metre area in the first major commercial installation of Marshall's 100 mm blocks. The innovative installation comes after extensive trials commissioned and conducted by John Emery, C.Eng., M.I.C.E., M.I.H.E., M.A.S.C.E. of Luton Borough Council.

The company's 80 mm blocks have already been successfully evaluated on the airport's aircraft parking areas but the 100 mm size was specified for the runway turning circle because it receives more rigorous treatment as aircraft turn through 180° prior to take-off. The area also takes the maximum jet blast from aircraft taking off.

Apart from the load-bearing abilities of block paving, its ease of installation and availability for immediate use make it an ideal material for airport use. Airport construction work tends to be severely restricted because of

busy flight schedules. Night-time and mid-winter are often the only times available for work to go ahead without disrupting traffic.

Both conditions provide severe limitations on construction methods and materials, quite apart from the need for immediate trafficking use. The advantage of block paving is that it can be laid, without ill-effect, even in sub-zero conditions and is ready for immediate use.

Laying rates are also surprisingly good. On the turning circle at Luton six men achieved rates averaging 250 square metres per shift or ten tons per man. The contractor, Furlong Brothers of Chingford, laid the blocks in herringbone formation on a 20 mm thick bed of sand. Prior to block laying the previous asphalt surface was planed off to a depth of 120 mm except around the perimeter where the original surface was retained as part of the edge restraint.

COMPANY NAME CHANGE

WITH EFFECT from the 1st April 1984, the businesses at present carried on by all companies within the concrete division will be merged and transferred into a new company to be known as Marshall's Mono Ltd. This change is being made in order to simplify administration and marketing procedures and will in no way change the basis on which the business of the concrete division operates.

We should therefore be pleased if you would address all enquiries after 1st April 1984, in accordance with the details set out on the enclosed information sheets.

Invoices for goods supplied will be invoiced in the name Marshall's Mono Ltd, "Marshall's" and all remittances, together with any account queries, should be addressed to Southowram, Halifax. Telephone (0422) 57155.

Please communicate the contents of this announcement to your Accounts Department.

NEW 'OLD YORK' IS A HONEY OF A PAVING



A NEW paving called 'Old York' has been developed for the consumer market by Marshall's.

With its riven-faced finish and rich honey colouring Old York cleverly reproduces the charm and character of traditional riven-faced stone flags.

But there isn't anything traditional about the new paving as far as weight is concerned. Old York comes in manageable 450 mm square slabs which can be easily handled by the DIY enthusiast. The small size also allows for more creative designs, particularly in today's smaller gardens.

vary considerably — from reddish brown to sandy fawn — but this is deliberately intended to add to the authenticity.

For natural good looks and non-slip surface Old York is made from crushed York stone aggregate. The 38 mm thick slabs are hydraulically pressed to give a strong and durable paving that is ideal for patios, paths and pool surrounds.

The new paving is seen to its best advantage when laid in a staggered bond rather than a regular square grid pattern. With wear and weather Old York mellows attractively and acquires individual character.

STONE LOOK-ALIKE

Marshall's achieve a natural stone look-alike by producing Old York with subtle changes of colour and surface texture between one slab and another. Just as with natural stone no two are exactly alike. Colours of Old York can

Old York cleverly reproduces the charm and character of traditional riven-faced stone flags.



When George Orwell wrote about "Airstrip 1" in his novel "1984" he certainly wasn't thinking of Luton Airport. But Luton actually is Airstrip 1 as far as innovation goes in the real 1984. It is the first airport to use concrete blocks to pave a runway turning circle. Aircraft hard-standing at the airport is also block-paved.

STAR WALKS

You can walk all over Scouse stars! All this is down to Marshall's skill in setting the stars' names in a "Pathway of Honour". More on page 3.



KING OF THE CONCRETE JUNGLE

Jumbo, made from glass reinforced concrete, is part of a menagerie designed to enliven children's play areas. He or she (difficult to tell the difference in concrete) is part of the Mono Playscape range of animals and fun sculptures.

BACK TO THE STONE AGE

Marshall's has grown from a quarrying company in Queen Victoria's era to one of Britain's leading manufacturers of concrete products. Now in Queen Elizabeth's reign the company is reviving its natural stone paving business. Read why on page 2.

Four out of five people can't tell York from L.



Front right there is York stone while on the left and centre right the buildings are in Cromwell Coursed Walling.

THE OLD and the new rub shoulders with such harmony in the redeveloped Woolshops area of Halifax that natural and reconstructed stone are indistinguishable to all but the most expert. The reconstructed material which blends so well with old York-stone in the area is Cromwell coursed walling made in Halifax by Marshalls.

days what nature takes millions of years to achieve. But we do insist on our raw materials being fully matured — like 350 million years old," he adds.

Cromwell is so convincing that Marshalls will not be telling locals where it is used in the Woolshops area. The spokesman says that it will be interesting to see how many people can spot it. There are areas where walls of Cromwell and natural York-stone meet up. "And in the words of Eric Morecambe you just can't see the joins" adds the spokesman.

Marshalls achieved such a good match because the raw material which goes into Cromwell is also quarried locally.

The product looks like real stone, can be cut and worked like real stone but it costs a quarter of the price. A company spokesman says, "It's even made in the same way as real stone. The difference is that we manage in

Back to the Stone Age!

REAL YORK-STONE paving flags can now be supplied to order by Marshalls. The company is producing a top quality product on the very latest sawing equipment.

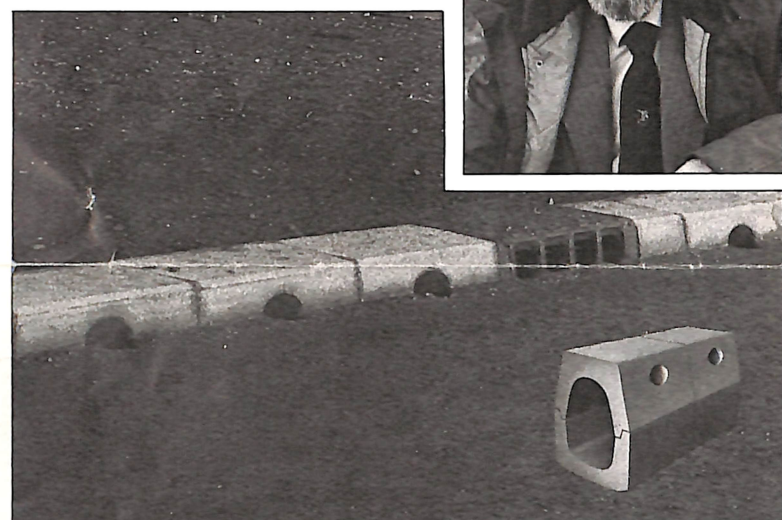
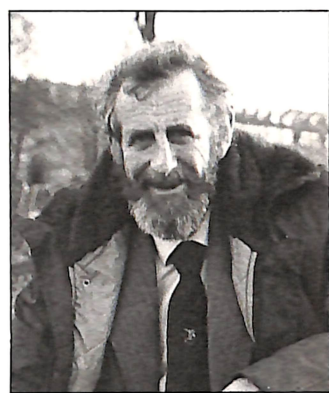
Marshalls have used modern earth-moving equipment to open up a new bed of stone specially suited for this purpose. In years gone by the bed would have been considered inaccessible.

Old quarry hands at Marshalls are already enthusiastic over the quality of the new bed. Pavings are now being produced in dimension one way sizes of 18", 20", 22", 24" gauge and in random lengths. Alternatively they are available in dimension two way sizes, all with sawn edges. Flags can be supplied with sawn or textured finishes.

In Queen Victoria's reign Marshalls quarried York-stone in Halifax to supply Britain's growing cities with paving flags, kerbs and building stone. Much of it is still to be seen in major buildings of that period. The new flags will be equal-herring.

Marshalls will be showing the new flags on its stand at the Chelsea Flower Show.

Award for the Beany Block man



A COMBINED highway kerb and drainage system manufactured in concrete by Marshalls of Halifax has won both a top design award and big orders from local authorities throughout the U.K. Significant cost savings have already been made by installing the new system in many recent road schemes.

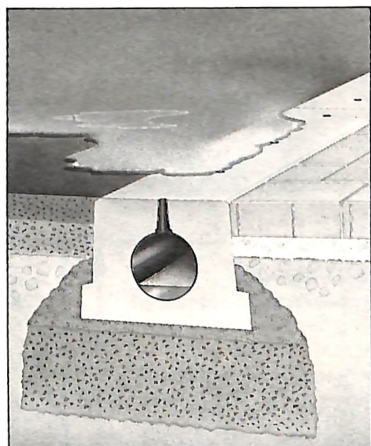
The unique system, named the "Beany Block" after its inventor, was devised by Neill Beanland during his work as a Highway Engineer with West Yorkshire County Council. Marshalls worked closely with Neill and West Yorkshire County Council to develop and finally market the product.

In recognition of his work on the Beany Block, Neill has received the Snow Award for Innovation, presented by the Concrete Society for innovation in the field of concrete and concrete construction. The presentation was made by Leeds University's Professor Tony Cusens who is this year's President of the Concrete Society.

Like so many brilliant ideas Neill's Beany Block is a relatively simple answer to a complex problem. It comprises two concrete sections which are placed one on top of the other to interlock and form a combined kerb and drainage unit. Each block has a sizeable drainage hole in the kerb edge so that an installed length of Beany Blocks can quickly clear large volumes of

surface water from paved surfaces.

Another innovative drainage product from Marshalls which is finding increasing use is the Porcupine Preform (pictured below). Porcupine is a precast surface water drainage unit incorporating a PVC pipe liner. Each 600 mm length of Porcupine has four cone-shaped drainage tubes designed to drain surface water without the risk of blocking. It can be installed in virtually any surface and is ideal for applications where a flat surface profile is essential.



'Keykerb'

a small - unit kerb system that is compatible with block paving

A SMALL — unit kerb system, specifically designed to be compatible with concrete block paving, has been developed by Marshalls under the "Keykerb" name. The system has fourteen different units to allow for even the most complex kerb detailing.

With the introduction of the system Marshalls can offer block paving and kerbing systems which are functionally and aesthetically compatible. For compatibility of design and ease of handling the kerb sections are comparable in size to concrete paving blocks and can easily be handled and installed by one man.

The system has two standard sections, allowing them to be laid with kerb checks of 100-125 mm and 25-50 mm respectively. For both kerb heights there are internal and external Corner units and Radial units to allow for small radius curves. Left and right-handed drop crossing kerbs are available for the formation of vehicular crossings or transition from high to low kerb checks.

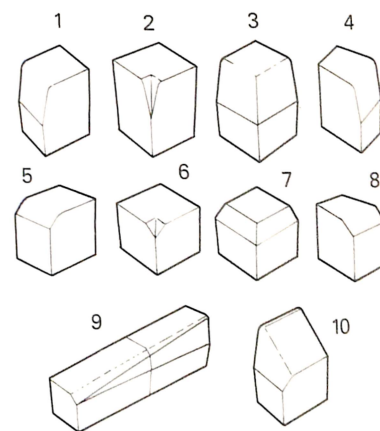
A new Beany Block design guide will be available shortly. Please contact Marshalls for copies.



The small size of Keykerb units permits greater freedom in detailing, allowing curves down to 500 mm radius and crossings of any desired width.

Apart from the undoubted advantage of Keykerb on design grounds, its ease of installation is very helpful and particularly in the growing private sector market for block paving. The tradesman or D.I.Y. enthusiast can lay the system single-handed.

Keykerb standard units are made in the same way as concrete paving blocks. All units are available in grey and red to co-ordinate with Marshalls' block paving.



1. Type KL 2. Internal Angle KL
3. External Angle KL
4. Radial Block KL
5. Type KS 6. Internal Angle KS
7. External Angle KS
8. Radial Block KS
9. Drop Crossing Kerb (left and right hand)
10. Transition (left and right hand)



Liverpool's International Garden Festival

— it's the only act big enough to follow John, Paul, George and Ringo

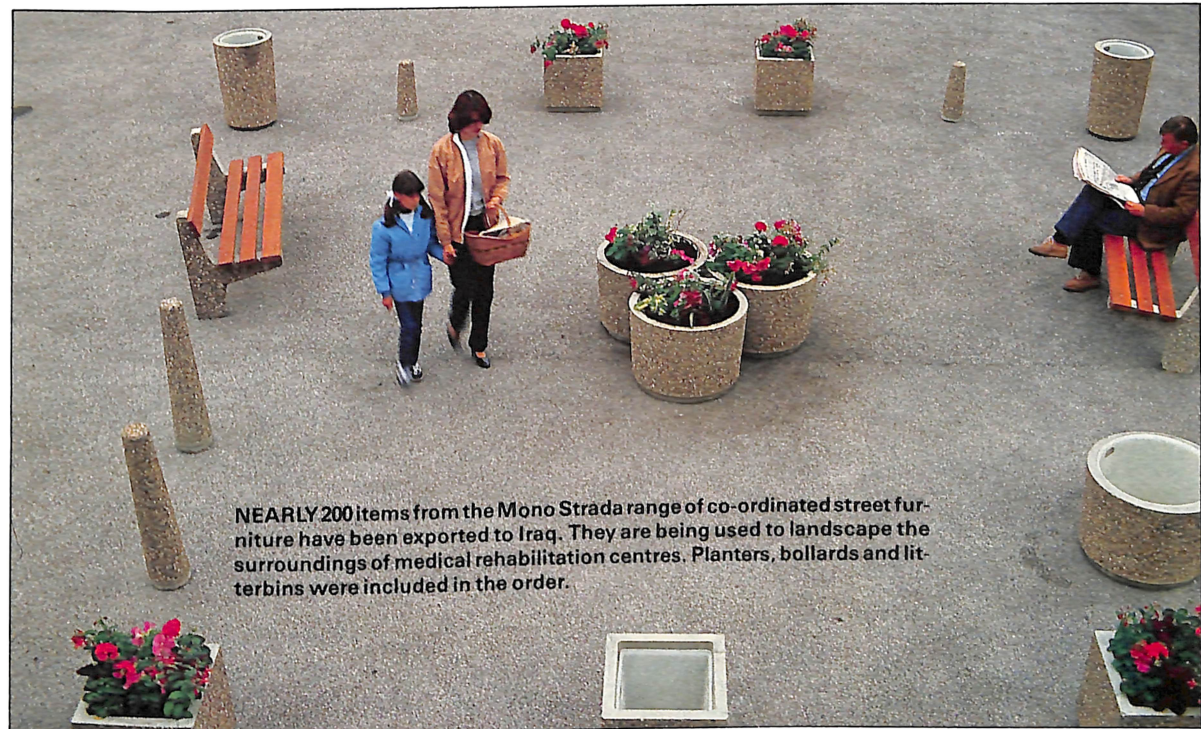
LIVERPOOL'S much publicised £20 million International Garden Festival opens in May, only three years after receiving the go-ahead from the Government.

In that brief time a derelict 125 acre riverside site of docks, tank farms and corporation tips has been landscaped and transformed into the garden world's answer to Disneyland.

Over 250,000 plants and 120,000 trees have been planted and sixty major gardens created. Thirty of them are gardens created in their national styles by guest countries as diverse as Japan, Egypt and Canada.

An imaginative 80,000 square feet domed pavilion, steam trains to carry visitors round on a 2½ mile narrow-gauge track and a water feature costing £500,000 are more delights awaiting the visitors who will flood into Liverpool between May and October. At the end of the Festival much of the area will be retained as a riverside park in the very heart of Liverpool.

Iraqi Order



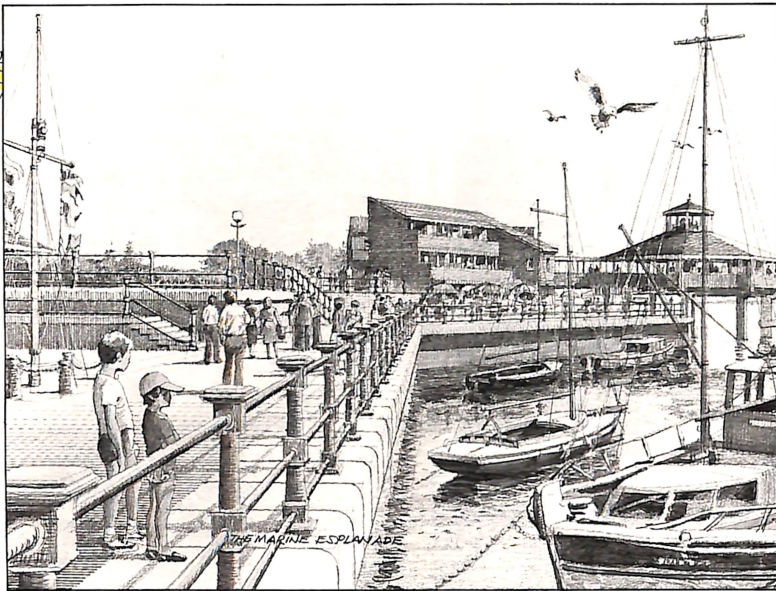
NEARLY 200 items from the Mono Strada range of co-ordinated street furniture have been exported to Iraq. They are being used to landscape the surroundings of medical rehabilitation centres. Planters, bollards and litterbins were included in the order.

Riverside paving by Marshalls

WITH AT least three million people expected to visit the Festival site this summer the pathways will see a lot of action. A variety of surfacing materials have been used on site but for the footways a large quantity of Marshalls Saxon Paving has been selected.

The 440 yard long riverside Esplanade is paved with nearly nine thousand 450 x 450 x 50 mm Saxon pavings in conjunction with granite setts. A 3000 square metre area around the main Festival Arena is also in Saxon finish but in the 600 x 600 x 50 size. In addition it has been used in some of the theme gardens — the Dutch garden is an example — along with a variety of other Marshalls products.

Saxon pavings have a pleasing coarse-textured surface with excellent non-slip properties. They are hydraulically pressed, using York-stone aggregate.



Marshalls Saxon Pavings have been used for the Marine Esplanade. In one area of the Esplanade is the "Pathway of Honour" — also by Marshalls.

...Marshalls set the Beatles in concrete

LIVERPOOL has long been known as a forcing house for showbiz personalities so an appropriate feature of the Festival is a "Pathway of Honour" along one section of the Esplanade. The names of around 60 Liverpool stars have been inlaid by Marshalls in its "Perfecta" pavings.

The Beatles, Arthur Askey, Frankie Vaughan and many, many more well-known names are included. Another 80 pavings carry the names of Liverpool companies which are stars in the worlds of commerce and industry to complete a fascinating area that will draw visitors and eager fans — but hopefully no souvenir hunters!

Marshalls devised its own technique for the hand-setting of each individual name before hydraulically pressing the pavings. The pavings were then given Marshalls "Perfecta" smooth ground surface finish. The finish still retains excellent non slip properties because of the York-stone aggregate used in the pavings.



...and shape up for the BBC

THE BBC is using Marshalls Eskoo-Six hexagonal block paving on its site at the Festival because it shapes up ideally! The BBC site has been designed as a series of eight hexagonal areas which tell the story of sixty years of children's programmes so it just had to be hexagonal paving for the pathways. Dare we say that laying Marshalls paving is child's play?

BOOKSHELF

WITH THE wide range of concrete products available, information is the name of the game. The Marshalls literature range runs to sixty separate publications to give you the facts. There are leaflets available to you covering the following subjects:-

WALLING

Marshallite
Tudor
Cromwell
Glenstone
Superscreen

PAVING FLAGS

Standard
Pennine
Saxon
Perfecta
Vehicular
Charnwood
Pastel
Deterrent
Exposed Aggregate

BLOCK PAVING

Monolok
Rustikal
Keyblok
Eskoo-Six

ENVIRONMENTAL

Tree Grills
Erosion Control Products
Ditchliners

STREET FURNITURE

Boulevard Range
Strada Range
Bollards
Seating Range
Cycle Blocks
Playscape
Plant containers
(A range of designs finished in concrete and g.r.c.)

KERB & DRAINAGE PRODUCTS

Standard Kerbs
Keykerb
Beany Block
(Combined kerb and drainage system)
Interlocking traffic blocks
Verge Markers
Porcupipe
Inspection Chambers
Segmental Soakaways

This outline cannot hope to cover the full scope of Marshalls activities but be sure that whatever your pre cast requirements are, the company can help you. And here are the latest publications from Marshalls.



This new bollard leaflet shows the complete range available from Marshalls along with full details of sizes, colours and surface finishes.

New Planter Leaflet

The exciting modular system of lightweight Mono Concrete planters, seats and litterbins for outdoor or indoor landscaping is covered fully in this leaflet.

New Eskoo-Six Leaflet

With ever growing interest in concrete block paving a new and more comprehensive Eskoo-Six leaflet has been produced to explain the advantages and methods of this machine-laid system.

PROMOTIONAL PLANS TO BACK YOU UP IN THE DIY MARKET

THE HOME improvement/gardening market for concrete products is in good health — and particularly after last year's glorious summer which convinced so many people of the pleasures to be had from patios and barbecues. Marshalls consumer advertising will be geared to turning last year's wishful thinking into sales for you.

The company will be reaching millions of purchasers through prime time television spots and full colour ads in key consumer magazines. In most cases they will be linked to patio paving and landscaping features for maximum effect.

Marshalls advertising produces many thousands of enquiries each year and 1984 will be no exception. The same goes for enquiries at exhibitions and during 1984 the company will be displaying its products to the trade and the general public at major exhibitions — including the Chelsea Flower Show.

Each enquiry is answered with full product information and the name of the nearest stockist so it is important that the people directed to you — and other callers — can see the products. Good display increases sales and particularly when small garden feature displays (they can be laid dry) show the products to their best advantage. Promotional back-up material in the form of posters, banners, product identification signs and stocked leaflet dispensers are available to aid your sales effort.

We don't pretend that concrete products are the easiest materials to stock and display but from experience with innovative dealers we know that the effort is very worthwhile in extra sales.

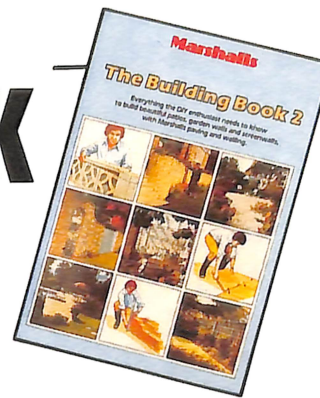


Colour ads in key consumer magazines and prime time television spots will be reaching millions of consumers.

Promotional back-up material is available to aid your sales effort.



Marshalls News is published by Marshalls Mono Ltd. Southowram, Halifax HX3 9SY. Telephone (0422) 57155. Copyright reserved. Items may not be reproduced in whole or part without permission.



...and the Building Book for you to sell!

THE MARSHALLS "Building Book" has been acclaimed by the press as an ideal step by step guide to paving and walling for the DIY enthusiast. Vast quantities have already been sold. Copies of the Building Book, which retails at 50p, are available to you. They're a sure seller from your counter and bring the DIY enthusiasts back for the products.

ESKOO-SIX — A second generation laying system for block paving

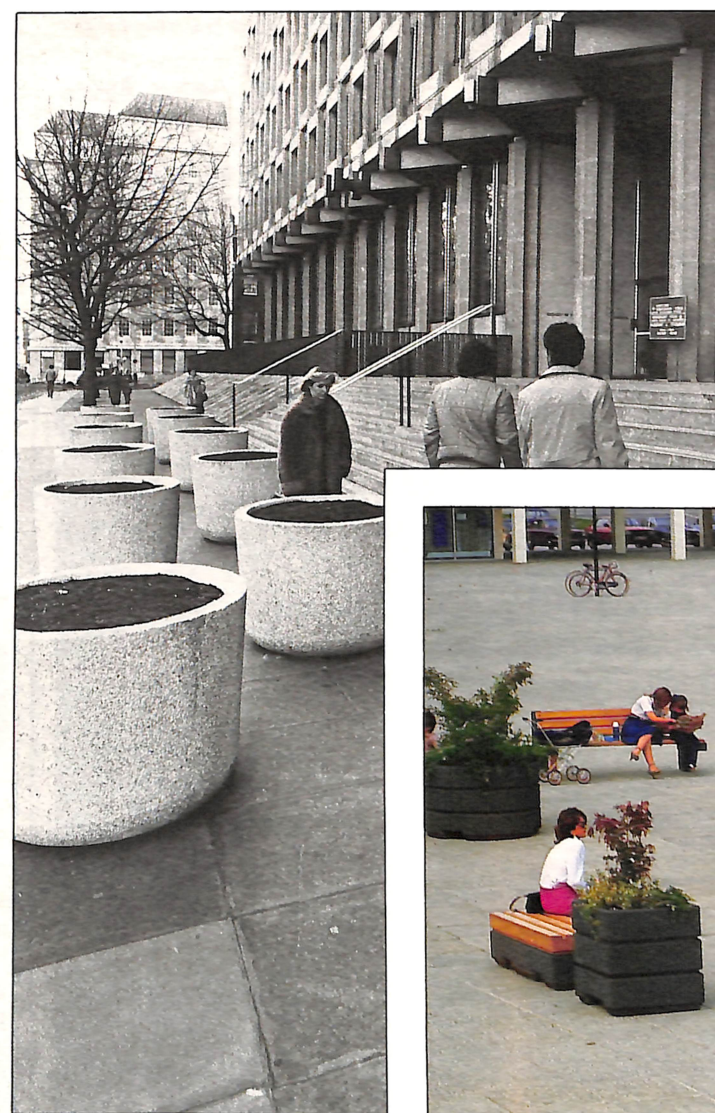
AFTER OVER a decade of growth in the British concrete block paving market it was only a question of time before a second generation product came along as an alternative to hand-laid blocks.

In the event Marshalls made the breakthrough with the introduction of the revolutionary Eskoo-Six system. Eskoo-Six block paving is laid by use of a simple, man-powered laying trolley to give a laying rate which is more than double that of hand-laid blocks and with considerably improved conditions for operatives.

Eskoo-Six blocks are delivered to site palletised and in layers of 24 blocks. The laying trolley is used to lift half a layer at a time from the pallet. The trolley is then wheeled to the laying face and the block formation is lowered into position. One man operates the trolley while another guides the blocks into position and makes any adjustments which may be necessary before the next formation is placed. The laying formation is shortly to be increased from 0.32 to 0.43 square metres, with a resultant increase in the laying rate of some 15-20%.

Eskoo-Six is a shaped block consisting of three hexagons joined together. This shape has twelve vertical faces to give maximum interlock between neighbouring blocks and extremely good load transfer characteristics. For this reason the system is particularly suitable for industrial and heavily trafficked areas.

Eskoo-Six strikes a happy balance between traditional hand-laying methods and other much more mechanised systems used on the Continent. A high laying rate is achieved but not at the expense of accurate positioning and without costly involvement in specialised powered equipment. The beauty of the Eskoo-Six system is that it levels out individual skills and gives uniformly high rates from all operatives.



Shirley for USA

CONCRETING international relations has been Marshalls most recent role with the installation of Mono Concrete Shirley planters outside the American Embassy in Grosvenor Square. (Picture by courtesy of the Daily Telegraph).

Boulevard for Jordan

MONO SEATS and planters have been used in landscaping work at the Queen Alia Airport in Jordan. They are from the Boulevard range of co-ordinated street furniture.

