



**Marshall's**

*Creating Better Landscapes*

# WHAT CAN WE DO ABOUT FLOODING?

Unless we take action, the flash floods that devastated communities all over the UK this June are set to become more frequent.

## Why is flooding on the increase?

**Increased urban development drives increasing volumes of water runoff into overburdened sewers**

**Poor planning diverts water courses from their natural route, creating bottlenecks**

**Climate change means that rainstorms are becoming more frequent and higher in intensity**

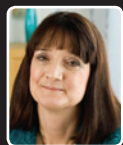
Charlestown, Hebden Bridge, 22nd June 2012

## What can we do about it?

"Sustainable Urban Drainage" (or SUDS) is an approach which mimics natural drainage systems, allowing water to permeate naturally into the ground at source. By managing the deluge from a heavy storm into a controlled flow of clean water, we can minimise the damage and distress caused by flooding.

**Find out why Marshall's Piora Permeable Block Paving is a perfect SUDS solution...**

# Marshalls Priora Permeable Paving

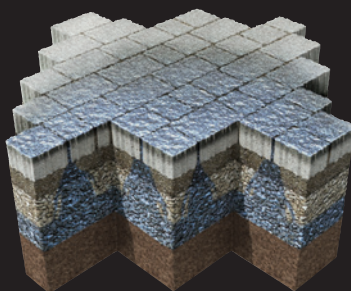


"Extreme weather incidents are becoming the norm rather than the exception. We can't stop it from raining, but we can plan for these events. Making permeable paving the first choice for any hard standing requirement is the very least local authorities, planners, architects and homeowners can do to help to alleviate this growing problem"

*Mary Dhonau (OBE), MDA Community Flood Consultants, Chair of the Flood Protection Association*



Just like standard block paving, Marshalls' market leading Priora permeable paving system provides an attractive and durable hard standing surface suitable for any loading requirement. Unlike a standard pavement, Priora eradicates surface water by allowing runoff to infiltrate immediately beneath the blocks, where it is safely stored in a specially designed sub-base before being released into the ground at source or into an appropriate water course at a controlled rate.



In addition, Marshalls is the only UK hard landscaping manufacturer to work with the Carbon Trust to measure and publish the carbon footprint of each of their products in accordance with PAS2050 – so you can be sure we're constantly working to minimise our impact on the environment.



Marshalls is the market leading expert in permeable paving, with over 10 years experience of successfully installed systems. We can now provide designs for ALL loading and application requirements...

**...so why isn't permeable paving your first choice whenever you need hard standing?**

To find out more, please call us on  
**0870 241 4725**  
or alternatively please visit  
**[www.marshalls.co.uk/wm](http://www.marshalls.co.uk/wm)**



## Marshalls

*Creating Better Landscapes*