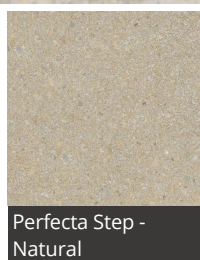


Perfecta 400 x 400 x 50 Step Tread

Date Created: 07/02/19



A collection of two-piece units for creating attractive, DDA-compliant steps which complement the surrounding landscape. Available in the popular Conservation, Perfecta and Saxon finishes and a variety of sizes as standard, with bespoke riser options available on request. Standard strip colours satisfy BS LRV's (Standard Light Reflective Values).

DESCRIPTION	
Product Type	Solid unit with textured surface
Manufacturing Process	Hydraulically pressed concrete
Standard Visibility Strip	Rubber composite material with hard-wearing slip-resistant finish
Base Raw Material	Concrete
Governing Manufacturing Standards	All data where relevant to be established in accordance with BS EN 1339 : 2003
CE Marking/DOP	https://www.marshalls.co.uk/dop
NBS Specification	Q25 31

Perfecta 400 x 400 x 50 Step Tread

Date Created: 07/02/19

PHYSICAL PROPERTIES

Tolerances	Minimum (mm)	Maximum (mm)
Length	396	400
Width	396	400
Thickness	47	53
Work Dimensions (mm)	398 x 398 x 50	
Nominal Dimensions (mm)	400 x 400 x 50	
Tolerances on Work Dimensions (mm)	Length ±2mm, width ±2mm, thickness ±3mm	
Durability (Freeze-thaw)	≤ 1.0 kg/m ² as a mean with no individual value > 1.5 kg/m ²	

SPECIFICATION

Approx unit weight (kg)	18
Emission of Asbestos	No content
External Fire Performance	Deemed to satisfy. See commission decision 2000/553/ECU
Reaction to fire	Class A1, see commission decision 2000/605/EC

SUSTAINABILITY

Carbon Footprint	Available on Request
------------------	----------------------

APPLICATION

Loading Classification	Category 1 - Pedestrian and domestic driveways
------------------------	------------------------------------------------

SITE WORKS

Coverage	6.25 no per m ²
----------	----------------------------

SUPPLY

Av. pack size (m ²)	6.4
Units Per Pack	40
Av. pack weight (kg)	736
Packaging	All packs are suitable for crane off-load Fork lift off-load on request

FURTHER INFORMATION

Cleaning & Maintenance	Cleaning & maintenance details are available on request
Efflorescence	Any product containing cement during its early life may exhibit a temporary white discolouration known as efflorescence. This is not a product fault and will gradually disappear with exposure to natural weathering and trafficking
Weathering	It should be appreciated that with all products weathering and site conditions can cause shade variation to appear across the surface of individual units. This does not in any way affect the performance of the units and any such variation will diminish over a period of time as the product matures.
Product Evolution	The evolution of new product design is continuous and information is subject to change without notice. Customers should check with the supplier to ensure that they have the latest details Marshall's reserve the right to amend the technical information as deemed necessary and in accordance with the relevant national and international standards without notice
Contact Us	For technical information on the design, specification and construction when utilising the product, contact the Technical Advisory Services Department on 0370 411 2233