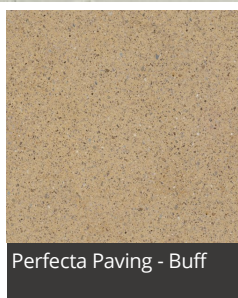


Perfecta 400 x 400 x 50

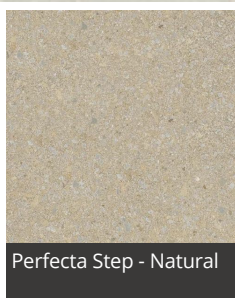
Date Created: 03/08/18



Perfecta Paving -
Natural



Perfecta Paving - Buff



Perfecta Step - Natural



Perfecta Step - Buff

Blended with a hard Yorkstone aggregate, Marshall's Perfecta Smooth Ground Flag Paving combines fantastic aesthetics and outstanding technical performance to act as a cost-effective alternative to premium natural Yorkstone.

The paving provides the warm, rich colour and character of natural Yorkstone, as well as durability and both wet and dry non-slip qualities at an affordable price.

Additionally, Perfecta is extremely versatile and is available in a comprehensive range of thicknesses and plan sizes, from 400 x 400mm to 600 x 600mm. It is also available with chamfered edges, which reduce the risk of spalling.

Marshall's Perfecta range comes in Trafica formats and versions of the product that feature Fibre Reinforcement for increased toughness and resistance to impact and overloading, which means it is suitable for the majority of variable loading applications.

DESCRIPTION

Appearance	Solid unit with smooth surface
Manufacturing Process	Hydraulically pressed concrete
Base Raw Material	Concrete
Governing Manufacturing Standards	All data where relevant to be established in accordance with BS EN 1339 : 2003
CE Marking/DOP	https://www.marshall's.co.uk/dop
NBS Specification	Q25 315



Perfecta 400 x 400 x 50

Date Created: 03/08/18

PHYSICAL PROPERTIES

Tolerances	Minimum (mm)	Maximum (mm)
Length	396	400
Width	396	400
Thickness	47	53
Work Dimensions (mm)	398 x 398 x 50	
Nominal Dimensions (mm)	400 x 400 x 50	
Tolerances on Work Dimensions (mm)	Length ±2mm, width ±2mm, thickness ±3mm	
Abrasion Resistance (mm)	≤ 23mm (Wide Wheel Abrasion Test)	
Durability (Freeze-thaw)	≤ 1.0 kg/m ² as a mean with no individual value > 1.5 kg/m ²	
Material Density	2300 kg/m ³ (typically)	
Slip/Skid Resistance (polished)	Mean polished skid resistance value (PSRV) : > 45	
Slip/Skid Resistance (unpolished)	Mean unpolished skid resistance value (USRV) : > 45.	
Thermal Conductivity (K value)	Design data as defined to BS EN 13369 : 2013	
Transverse/FlexuralSplit/Breaking	Characteristic bending strength of 4.0 MPa with no individual result less than 3.2 MPa	

SPECIFICATION

Approx unit weight (kg)	18
Emission of Asbestos	No content
External Fire Performance	Deemed to satisfy. See commission decision 2000/553/ECU
Reaction to fire	Class A1, see commission decision 2000/605/EC

SUSTAINABILITY

Breem	These units can achieve an "A" rated system when used in conjunction with the correct sub-base components
Carbon Footprint	20 kg CO2 m ²

APPLICATION

Suitability	Laid in accordance with BS 7533-4 : 2006
-------------	--

SITE WORKS

Coverage	6.25 no per m2
----------	----------------

SUPPLY

Av. pack size (m2)	6.4
Units Per Pack	40
Av. pack weight (kg)	736
Packaging	All packs are suitable for crane off-load. Fork lift off-load on request

FURTHER INFORMATION

Cleaning & Maintenance	Information regarding the cleaning & maintenance of this product may be obtained on request
Efflorescence	Any product containing cement during its early life may exhibit a temporary white discolouration known as efflorescence. This is not a product fault and will gradually disappear with exposure to natural weathering and trafficking
Weathering	It should be appreciated that with all products weathering and site conditions can cause shade variation to appear across the surface of individual units. This does not in any way affect the performance of the units and any such variation will diminish over a period of time as the product matures.
Product Evolution	The evolution of new product design is continuous and information is subject to change without notice. Customers should check with the supplier to ensure that they have the latest details. Marshall's reserve the right to amend the technical information as deemed necessary and in accordance with the relevant national and international standards without notice

Contact Us	For technical information on the design, specification and construction when utilising the product, contact the Technical Advisory Services Department on 0370 411 2233
------------	---