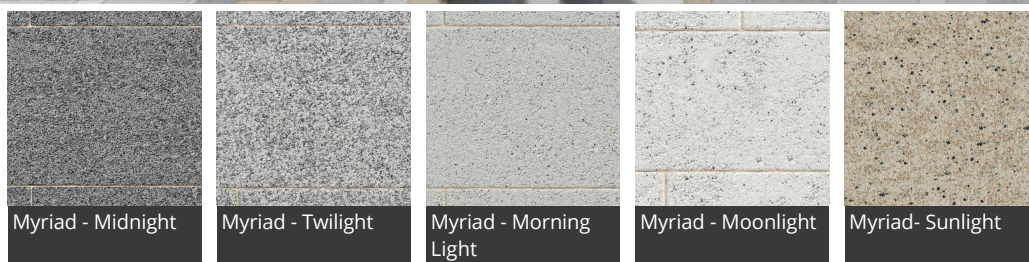
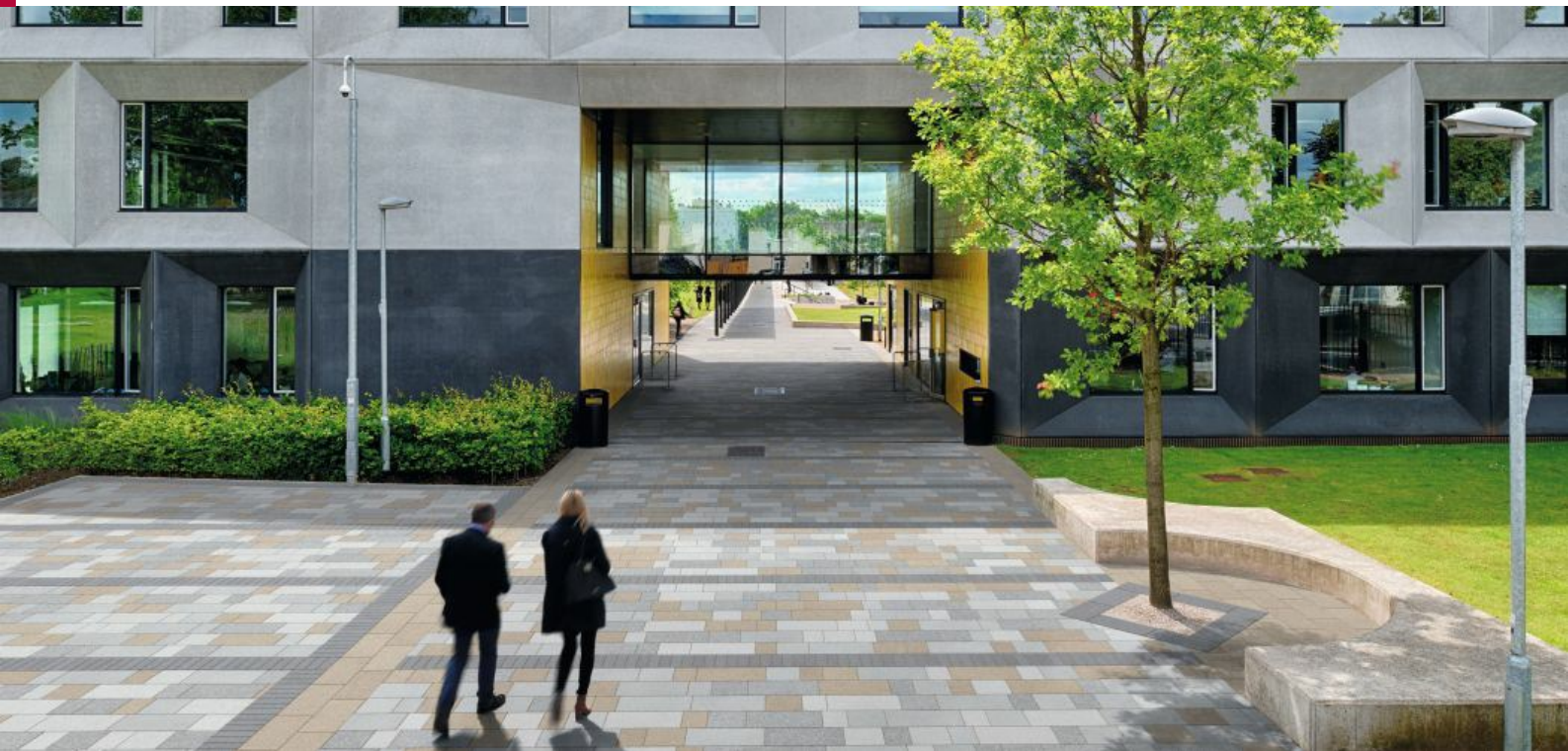


Myriad 300 x 200 x 80

Date Created: 07/02/19



*Natural products are manufactured from aggregates sourced locally to the works and contain no pigmentation, therefore colour variation between products from different works is possible.

Available in a range of colours and sizes, the cost effective Myriad Combined Concrete paving collection provides scope for optimum creativity within any urban landscape project. Popular with designers and architects, it allows for mixing and matching the plan sizes and gauges to create eye-catching, original designs. Designers can tailor the Myriad collection to meet any project's needs – whether that means sticking to one size and colour pattern, or crafting a vibrant patchwork of paving. Myriad is now available in 5 colours, including the new Sunlight colourway and 6 plan sizes, including the new 400x400 plan size, making the range suitable for multi-functional spaces.

DESCRIPTION									
Appearance	Two part unit with textured surface and integral spacers								
Manufacturing Process	Semi dry pressed & vibrated concrete								
Base Raw Material	Concrete								
Governing Manufacturing Standards	All data where relevant to be established in accordance with BS EN 1338 : 2003								
CE Marking/DOP	https://www.marshalls.co.uk/dop								
NBS Specification	<table> <tr> <td>Q24 10</td><td>Q24 110</td></tr> <tr> <td>Q24 112</td><td>Q24 113</td></tr> <tr> <td>Q25 120</td><td>Q25 125</td></tr> <tr> <td>Q25 220</td><td>Q25 315</td></tr> </table>	Q24 10	Q24 110	Q24 112	Q24 113	Q25 120	Q25 125	Q25 220	Q25 315
Q24 10	Q24 110								
Q24 112	Q24 113								
Q25 120	Q25 125								
Q25 220	Q25 315								

Myriad 300 x 200 x 80

Date Created: 07/02/19

PHYSICAL PROPERTIES

Tolerances	Minimum (mm)	Maximum (mm)
Length	297	301
Width	197	201
Thickness	77	83
Work Dimensions (mm)	299 x 199 x 80	
Nominal Dimensions (mm)	300 x 200 x 60	
Tolerances on Work Dimensions (mm)	Length ± 2 mm, width ± 2 mm, thickness ± 3 mm	
Abrasion Resistance (mm)	≤ 23 mm (Wide Wheel Abrasion Test)	
Durability (Freeze-thaw)	≤ 1.0 kg/m ² as a mean with no individual value > 1.5 kg/m ²	
Material Density	2300 kg/m ³ (typically)	
Slip/Skid Resistance (polished)	Mean polished skid resistance value (PSRV) : > 45	
Slip/Skid Resistance (unpolished)	Mean unpolished skid resistance value (USRV) : > 45 .	
Thermal Conductivity (K value)	Design data as defined to BS EN 13369 : 2013	
Tensile Splitting Strength	Characteristic tensile splitting strength not less than 3.6 MPa. None of the individual results shall be less than 2.9 MPa, nor have a failure load less than 250N/mm of splitting length	

SPECIFICATION

Approx unit weight (kg)	11.2
Emission of Asbestos	No content
External Fire Performance	Deemed to satisfy. See commission decision 2000/553/ECU
Reaction to fire	Class A1, see commission decision 2000/605/EC

SUSTAINABILITY

Breeam	These units can achieve an "A" rated system when used in conjunction with the correct sub-base components
Carbon Footprint	34 kg CO ₂ m ²

SITE WORKS

Coverage	16.2 no per m ²
----------	----------------------------

SUPPLY

Av. pack size (m ²)	7.2
Units Per Pack	116
Av. pack weight (kg)	1342
Packaging	All packs are shrinkwrapped onto pallets for fork off-load or crane off-load if necessary

FURTHER INFORMATION

Cleaning & Maintenance	Cleaning & maintenance details are available on request
Efflorescence	Any product containing cement during its early life may exhibit a temporary white discolouration known as efflorescence. This is not a product fault and will gradually disappear with exposure to natural weathering and trafficking
Weathering	It should be appreciated that with all products weathering and site conditions can cause shade variation to appear across the surface of individual units. This does not in any way affect the performance of the units and any such variation will diminish over a period of time as the product matures.
Product Evolution	Marshalls reserve the right to amend the technical information as deemed necessary and in accordance with the relevant national and international standards without notice. The evolution of new product design is continuous and information is subject to change without notice. Customers should check with the supplier to ensure that they have the latest details
Contact Us	For technical information on the design, specification and construction when utilising the product, contact the Technical Advisory Services Department on 0370 411 2233



Myriad 300 x 200 x 80

Date Created: 07/02/19

APPLICATION

Suitability

For any given application, any resulting soiling (whether vehicular or pedestrian origin) will be more apparent on the lighter shades than any of the darker shades, so careful consideration should be given when selecting colour in relation to application. Therefore, consideration should be given to any possible additional maintenance requirements, to ensure a desirable and acceptable appearance is provided.

Loading Classification

Category 6 - 10 large goods vehicles per week (0.15 msa)

