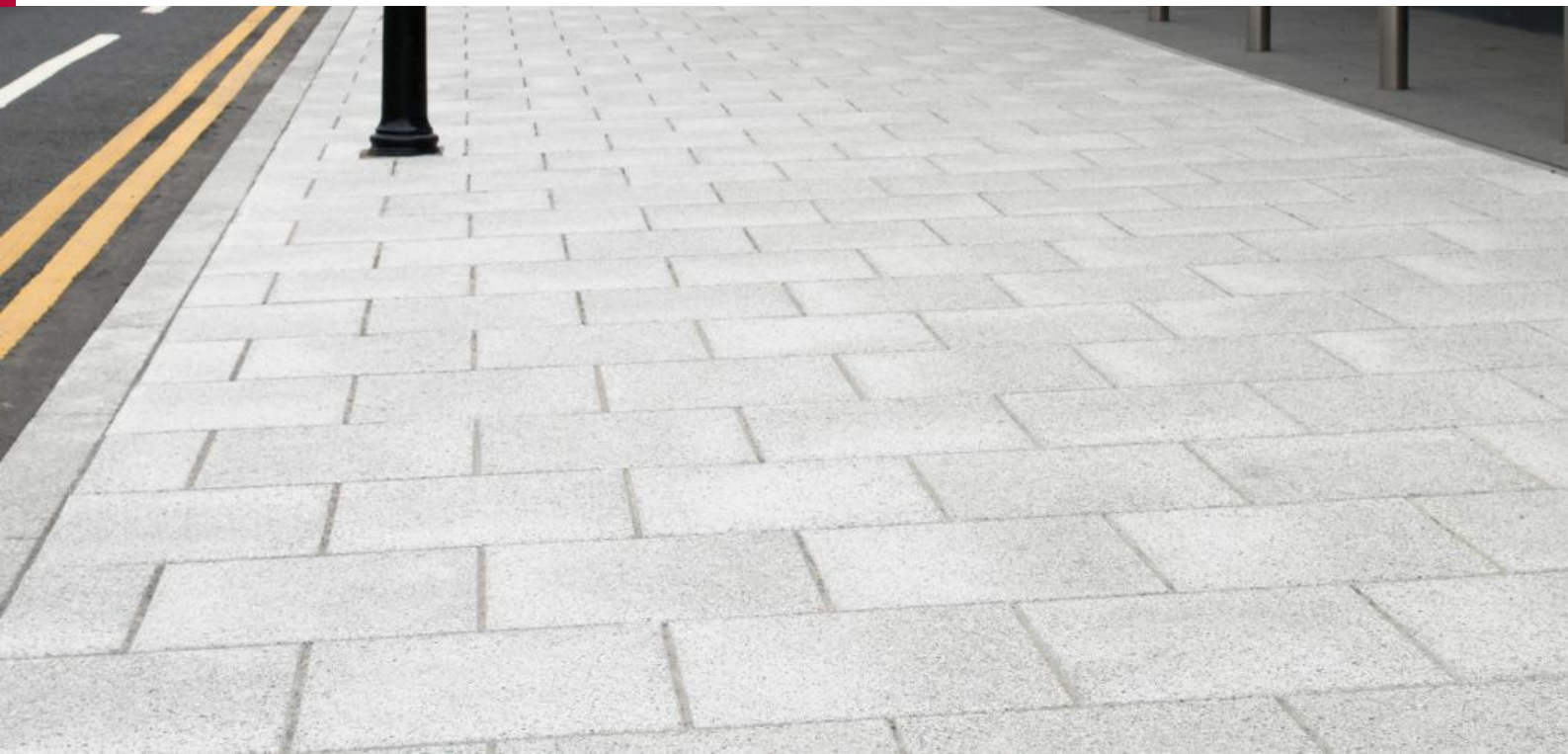


Conservation Skimmed 450 x 450 x 70

Date Created: 07/02/19



First introduced to bring urban developments to life, Conservation paving offers a charming contemporary style known for its unique blend and lavish mix of natural granite aggregates and is further enhanced by a choice of surface finish.

The new enhanced Conservation range is now available in three finishes and three colours.

The new skimmed surface finish gently exposes the aggregates providing an enhanced colour finish on the surface as it draws out the unique blend and lavish mix of aggregates.

The new colour Heather Grey is bursting with colour and complements the existing Silver Grey and Charcoal Grey colour palette, giving clients the ability to mix and match for greater creativity.

DESCRIPTION	
Appearance	Solid unit with skimmed surface
Manufacturing Process	Hydraulically pressed concrete
Base Raw Material	Pigmented & unpigmented concrete utilising specially selected aggregates
Governing Manufacturing Standards	All data where relevant to be established in accordance with BS EN 1339 : 2003
CE Marking/DOP	https://www.marshalls.co.uk/dop
NBS Specification	Q25 315 Q25 315

Conservation Skimmed 450 x 450 x 70

Date Created: 07/02/19

PHYSICAL PROPERTIES

Tolerances	Minimum (mm)	Maximum (mm)
Length	446	450
Width	446	450
Thickness	67	73
Work Dimensions (mm)	448 x 448 x 70	
Nominal Dimensions (mm)	450 x 450 x 70	
Tolerances on Work Dimensions (mm)	Length ±2mm, width ±2mm, thickness ±3mm	
Abrasion Resistance (mm)	≤ 23mm (Wide Wheel Abrasion Test)	
Durability (Freeze-thaw)	≤ 1.0 kg/m ² as a mean with no individual value > 1.5 kg/m ²	
Material Density	2300 kg/m ³ (typically)	
Slip/Skid Resistance (polished)	Mean polished skid resistance value (PSRV) : > 45	
Slip/Skid Resistance (unpolished)	Mean unpolished skid resistance value (USRV) : > 45.	
Thermal Conductivity (K value)	Design data as defined to BS EN 13369 : 2013	

SPECIFICATION

Approx unit weight (kg)	34
Emission of Asbestos	No content
External Fire Performance	Deemed to satisfy. See commission decision 2000/553/ECU
Reaction to fire	Class A1, see commission decision 2000/605/EC

SUSTAINABILITY

Breem	These units can achieve an "A" rated system when used in conjunction with the correct sub-base components
Carbon Footprint	34 kg CO ₂ m ²

APPLICATION

Loading Classification	Category 6 - 10 large goods vehicles per week (0.15 msa)
------------------------	--

SITE WORKS

Coverage	4.9 no per m ²
----------	---------------------------

SUPPLY

Av. pack size (m ²)	5.7
Units Per Pack	28
Av. pack weight (kg)	941
Packaging	All packs are suitable for crane off-load Fork lift off-load on request

FURTHER INFORMATION

Cleaning & Maintenance	Cleaning & maintenance details are available on request
Efflorescence	Any product containing cement during its early life may exhibit a temporary white discolouration known as efflorescence. This is not a product fault and will gradually disappear with exposure to natural weathering and trafficking
Weathering	It should be appreciated that with all products weathering and site conditions can cause shade variation to appear across the surface of individual units. This does not in any way affect the performance of the units and any such variation will diminish over a period of time as the product matures.
Product Evolution	The evolution of new product design is continuous and information is subject to change without notice. Customers should check with the supplier to ensure that they have the latest details. Marshall's reserve the right to amend the technical information as deemed necessary and in accordance with the relevant national and international standards without notice
Contact Us	For technical information on the design, specification and construction when utilising the product, contact the Technical Advisory Services Department on 0370 411 2233