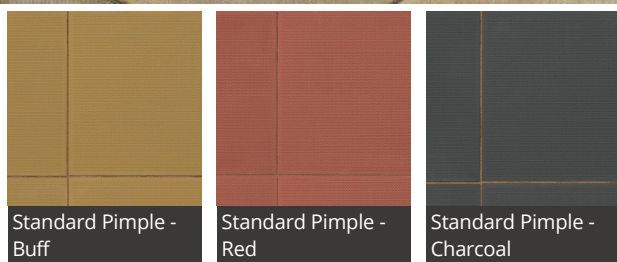


## Coloured Pimple 900 x 600 x 50

Date Created: 07/02/19



Durable and functional, Coloured Pimpled Paving from Marshall's is ideal for any urban landscaping project. Its highly textured pimpled surface maximises traction for skid performance, making it ideal for busy public spaces, such as transport hubs, pedestrianised zones and shopping areas.

A choice of 4 colours are available within the range - Natural, Buff, Charcoal and Red. They look attractive when used together to delineate distinct areas or individually for a uniform aesthetic.

The manufacturing process for Coloured Pimple Paving also utilises recycled content, with up to 80% of materials used falling into this bracket.

To cater for different loading requirements, Marshall's Coloured Pimpled Paving is available in two thicknesses, 50mm and 63mm, and comes in a number of plan sizes, ranging from 300 x 300mm all the way up to 900 x 600mm.

DESCRIPTION	
Appearance	Solid unit with pimple surface
Manufacturing Process	Hydraulically pressed concrete
Base Raw Material	Concrete
Governing Manufacturing Standards	All data where relevant to be established in accordance with BS EN 1339 : 2003
CE Marking/DOP	<a href="https://www.marshalls.co.uk/dop">https://www.marshalls.co.uk/dop</a>
NBS Specification	Q25 315

# Coloured Pimple 900 x 600 x 50

Date Created: 07/02/19

## PHYSICAL PROPERTIES

Tolerances	Minimum (mm)	Maximum (mm)
Length	896	900
Width	596	600
Thickness	47	53
Work Dimensions (mm)	898 x 598 x 50	
Nominal Dimensions (mm)	900 x 600 x 50	
Tolerances on Work Dimensions (mm)	Length $\pm 2$ mm, width $\pm 2$ mm, thickness $\pm 3$ mm	
Abrasion Resistance (mm)	$\leq 23$ mm (Wide Wheel Abrasion Test)	
Durability (Freeze-thaw)	$\leq 1.0$ kg/m <sup>2</sup> as a mean with no individual value $> 1.5$ kg/m <sup>2</sup>	
Material Density	2300 kg/m <sup>3</sup> (typically)	
Slip/Skid Resistance (polished)	Mean polished skid resistance value (PSRV) : $> 45$	
Slip/Skid Resistance (unpolished)	Mean unpolished skid resistance value (USRV) : $> 45$ .	
Thermal Conductivity (K value)	Design data as defined to BS EN 13369 : 2013	

## SPECIFICATION

Approx unit weight (kg)	64
Emission of Asbestos	No content
External Fire Performance	Deemed to satisfy. See commission decision 2000/553/ECU
Reaction to fire	Class A1, see commission decision 2000/605/EC

## SUSTAINABILITY

Breem	These units can achieve an "A" rated system when used in conjunction with the correct sub-base components
Carbon Footprint	Available on Request

## APPLICATION

Loading Classification	Category 6 - 10 large goods vehicles per week (0.15 msa)
------------------------	----------------------------------------------------------

## SITE WORKS

Coverage	1.9 no per m <sup>2</sup>
----------	---------------------------

## SUPPLY

Av. pack size (m <sup>2</sup> )	10.8
Units Per Pack	20
Av. pack weight (kg)	1280
Packaging	All packs are suitable for crane off-load Fork lift off-load on request

## FURTHER INFORMATION

Cleaning & Maintenance	Cleaning & maintenance details are available on request
Efflorescence	Any product containing cement during its early life may exhibit a temporary white discolouration known as efflorescence. This is not a product fault and will gradually disappear with exposure to natural weathering and trafficking
Weathering	It should be appreciated that with all products weathering and site conditions can cause shade variation to appear across the surface of individual units. This does not in any way affect the performance of the units and any such variation will diminish over a period of time as the product matures.
Product Evolution	The evolution of new product design is continuous and information is subject to change without notice. Customers should check with the supplier to ensure that they have the latest details. Marshall's reserve the right to amend the technical information as deemed necessary and in accordance with the relevant national and international standards without notice
Contact Us	For technical information on the design, specification and construction when utilising the product, contact the Technical Advisory Services Department on 0370 411 2233