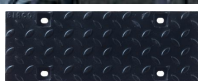


Birco Shallow

Date Created: 07/02/19



birco 150 cast
 iron slotted
 grate 12mm -
 c250 e600 and
 f900



birco 150 cast
 iron solid cover



birco 150 cast
 iron heelsure
 grate 6mm



birco 150
 galvanised cast
 iron slotted
 grate 12mm



birco 150
 galvanised steel
 mesh 20mm x
 30mm

For a project that requires surface water drainage solutions, Birco Shallow is an outstanding low-medium capacity system. A flexible drainage solution, particularly if there are limitations on excavation depths or where sub-soil drainage would be hindered. Birco Shallow is available in widths of 100, 150 and 300mm.

It benefits from full compatibility with other Birco units and loadings of up to F900 can be achieved when the appropriate grating is used, making Birco Shallow an ideal choice for public, commercial and rail applications.

A choice of cast iron, galvanised and stainless steel gratings in a variety of patterns means designers can select the most appropriate style depending on project aesthetics, as well as loading requirements.

DESCRIPTION

Manufacturing Process	Semi dry pressed & vibrated concrete
Base Raw Material	Concrete
Governing Manufacturing Standards	All data where relevant to be established in accordance with BS EN 1433 : 2002
CE Marking/DOP	https://www.marshall's.co.uk/dop
NBS Specification	Q10 180

Birco Shallow

Date Created: 07/02/19

PHYSICAL PROPERTIES

Work Dimensions (mm)	1000 x 200 - 450 x 80 - 300
Apparent Density	2300 kg/m ³ (typically)
Water Absorption (%)	6.5% maximum
Water Tightness	Meets the requirements of the standard.

SPECIFICATION

Approx unit weight (kg)	54 to 102 kg (excluding top units)
Emission of Asbestos	No content
Reaction to fire	Class A1, see commission decision 2000/605/EC

APPLICATION

Application	Suitable for all locations as described in BS EN 1433 : 2002 for load classification F900
Suitability	Suitable for use in any kerb location as defined in BS EN 1433 and The Highways Agency's Contract Documents and Specification for Highway Works
Restrictions	Not suitable for use in the main carriageway of a road or motorway cross-over
Loading Classification	E600 F900

PERFORMANCE

Discharge of cross section	9000 mm ² - 29000 mm ²
Protection of steel	Thickness of galvanising is 70 microns
Sealing of joints	Completed by the use of M-Seal or M-Flex into rebate
Security of Grating	By 8no bolts per 1000mm channel

SUPPLY

Units Per Pack	Pallet packed for individual contracts
Av. pack weight (kg)	Maximum 1.5 tonnes
Packaging	Banded & shrink-wrapped onto non-returnable pallets

SUSTAINABILITY

Carbon Footprint	Available on Request
------------------	----------------------

FURTHER INFORMATION

Efflorescence	Any product containing cement during its early life may exhibit a temporary white discolouration known as efflorescence. This is not a product fault and will gradually disappear with exposure to natural weathering and trafficking
---------------	---------------------------------------------------------------------------------------------------------------------------------------------------------------------------------------------------------------------------------------

Product Evolution	The evolution of new product design is continuous and information is subject to change without notice. Customers should check with the supplier to ensure that they have the latest details. Marshall's reserve the right to amend the technical information as deemed necessary and in accordance with the relevant national and international standards without notice. Marshall's reserve the right to amend the technical information as deemed necessary and in accordance with the relevant national and international standards without notice.
-------------------	--------------------------------------------------------------------------------------------------------------------------------------------------------------------------------------------------------------------------------------------------------------------------------------------------------------------------------------------------------------------------------------------------------------------------------------------------------------------------------------------------------------------------------------------------------

Contact Us	For technical information on the design, specification and construction when utilising the product, contact the Technical Advisory Services Department on 0370 411 2233
------------	-------------------------------------------------------------------------------------------------------------------------------------------------------------------------

Birco Shallow

Date Created: 07/02/19

GRATING	LOADING	LENGTH	WIDTH	UNIT WEIGHT	ITEM CODE
100 CI Grate Diagonal slot E+	E600	500	187	6.2	DR1150200
12 Slotted Cast Iron Grate	E600	500	187	6.4	DR1151250
12 Slotted Cast Iron Grate	F900	500	187	7.6	DR1151300
6 Heelsure Slotted Cast Iron Grate	E600	500	187	6.4	*DR1151350
Solid Cast Iron Grate	E600	500	187	7.5	DR1152500
30x20 Mesh Galvanised Steel Grate	E600	500	187	7.2	DR1152850
12 Slotted Cast Iron Grate	E600	500	237	10.7	DR1952100
12 Slotted Cast Iron Grate	F900	500	237	12.4	DR1952200
Solid Cast Iron Grate	E600	500	237	11.0	DR1952300
6 Heelsure Slotted Cast Iron Grate	E600	500	237	10.5	*DR1952400
12 Slotted Galvanised Cast Iron Grate	E600	500	237	10.5	DR1970300
20x30 Mesh Galvanised Steel Grate	E600	1000	237	14.1	DR1972800
20x30 Mesh Galvanised Steel Grate	E600	500	237	7.2	DR1972900
20 Slotted Cast Iron Grate	E600	500	417	21.0	DR3906200
20 Slotted Cast Iron Grate	F900	500	417	30.0	DR3906300

* Products with an asterisk against the item code are available ex-stock
Products without an asterisk against the item code are manufactured to order

