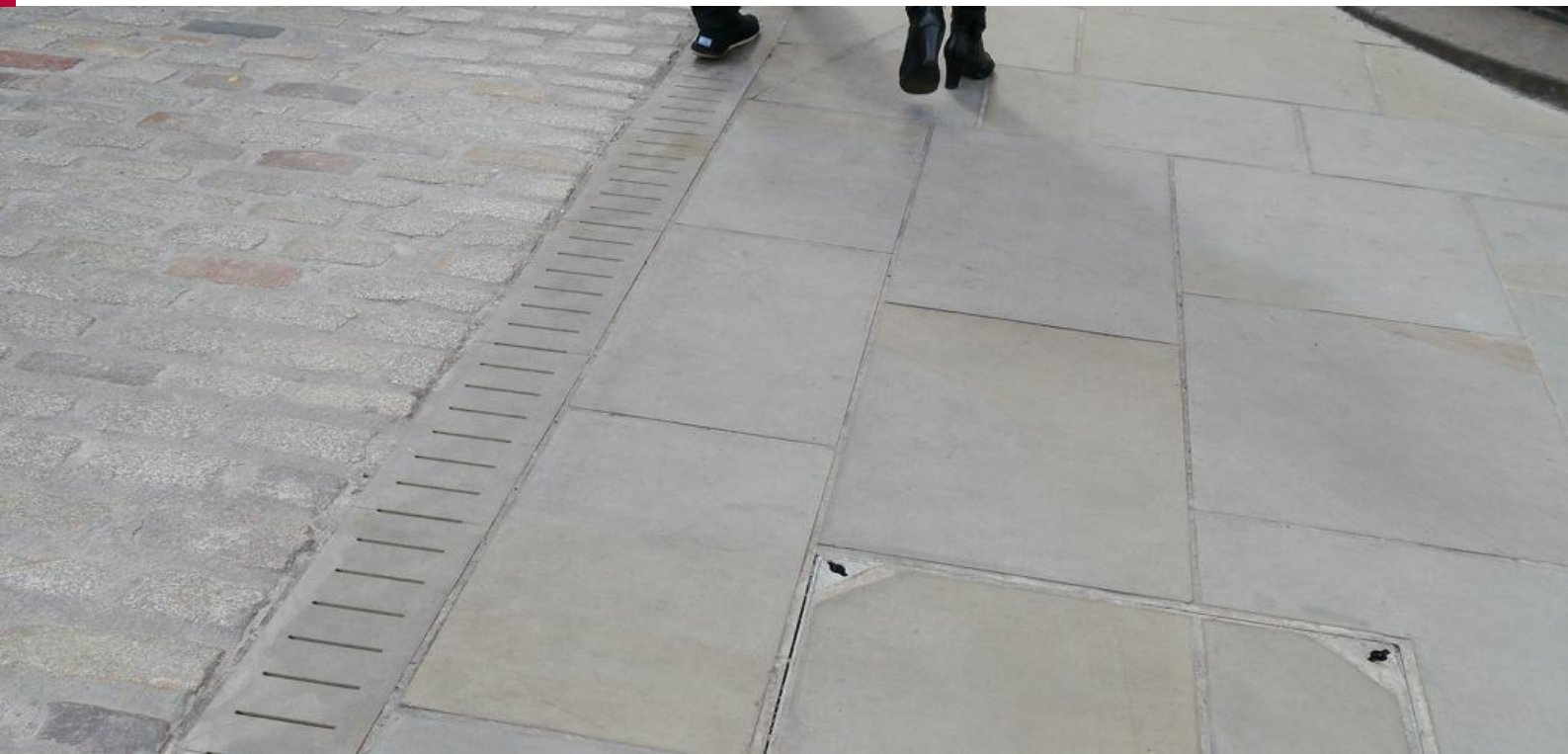


# A68 Drexus 100 Natural Stone Pave Drain

Date Created: 19/06/2025



drexus pave  
drain - silver  
grey granite

drexus pave  
drain - mid grey  
granite

Drexus 100 Natural Stone Pave Drain is a low capacity Linear Drainage system. offers a unique aesthetic for linear drainage, suitable for any prestigious public realm development.

Through our heritage in natural stone we have developed a drainage solution to complement our most popular natural stone paving products.

Drexus 100 Natural Stone Pave Drain is available in a variety of stones including Mid Grey Granite and Silver Grey Granite.

Marshall's Drexus 100 Natural Stone Pave Drain is designed to provide the Landscape Architect with choice and flexibility for an aesthetically pleasing linear drainage. For appropriate bases and channels please see Drexus 100.

## DESCRIPTION

Manufacturing Process	Semi dry pressed and vibrated concrete with bonded Granite on Natural Stone slip
Base Raw Material	Concrete
Governing Manufacturing Standards	All data where relevant to be established in accordance with BS EN 1433 : 2002
CE Marking/DOP	<a href="https://www.marshalls.co.uk/dop">https://www.marshalls.co.uk/dop</a>
NBS Specification	Q10 180

# A68 Drexus 100 Natural Stone Pave Drain

Date Created: 07/02/19

## PHYSICAL PROPERTIES

Work Dimensions (mm)	1000/500 x 160 x 170 1000/500 x 160 x 195 1000/500 x 160 x 220 1000/500 x 160 x 245 1000/500 x 160 x 270
Apparent Density	2280 kg/m <sup>3</sup> (typically)
Slip/Skid Resistance (polished)	Mean polished skid resistance value (PSRV) : > 45
Slip/Skid Resistance (unpolished)	Mean unpolished skid resistance value (USRV) : > 45.
Water Absorption (%)	Meets the requirement for Grade 2
Water Tightness	Meets the requirements of the standard.

## SPECIFICATION

Approx unit weight (kg)	37 to 70 kg ( channel) 17kg (top)
Emission of Asbestos	No content
Reaction to fire	Class A1, see commission decision 2000/605/EC

## APPLICATION

Application	Suitable for all locations as described in BS EN 1433 : 2002 for load classification D400
Suitability	Suitable for use in any kerb location as defined in BS EN 1433 and The Highways Agency's Contract Documents and Specification for Highway Works
Restrictions	Not suitable for use in the main carriageway of a road or motorway cross-over
Loading Classification	D400

## PERFORMANCE

Discharge of cross section	7300 mm <sup>2</sup> - 22300 mm <sup>2</sup>
Sealing of joints	Completed by the use of M-Flex into rebate
Security of Grating	Installation details are available on request

## SUPPLY

Units Per Pack	Pallet packed for individual contracts
Av. pack weight (kg)	Maximum 1.7 tonnes
Packaging	Banded & shrink-wrapped onto non-returnable pallets

## SUSTAINABILITY

Carbon Footprint	Available on Request
------------------	----------------------

## FURTHER INFORMATION

Efflorescence	Any product containing cement during its early life may exhibit a temporary white discolouration known as efflorescence. This is not a product fault and will gradually disappear with exposure to natural weathering and trafficking
---------------	---

Product Evolution	The evolution of new product design is continuous and information is subject to change without notice. Customers should check with the supplier to ensure that they have the latest details. Marshalls reserve the right to amend the technical information as deemed necessary and in accordance with the relevant national and international standards without notice.
-------------------	--

Contact Us	For technical information on the design, specification and construction when utilising the product, contact the Technical Advisory Services Department on 0370 411 2233
------------	---

## A68 Drexus 100 Natural Stone Pave Drain

Date Created: 07/02/19

