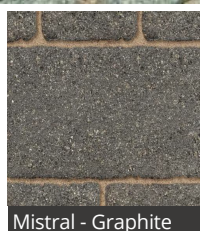
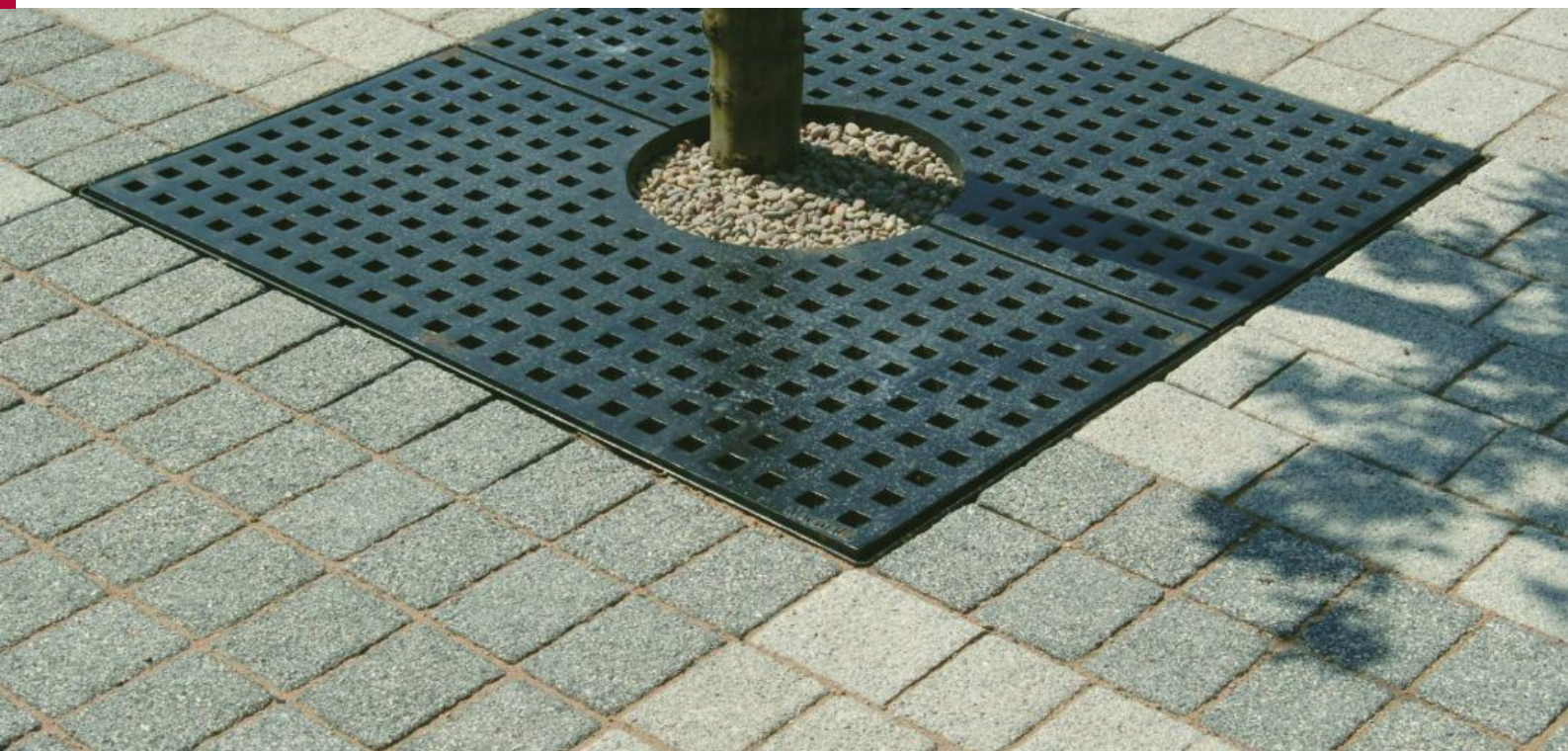
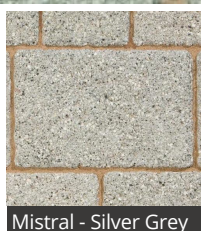


Mistral 160 x 120 x 60

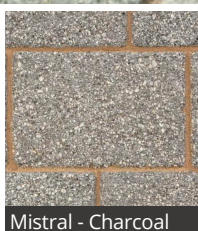
Date Created: 07/02/19



Mistral - Graphite



Mistral - Silver Grey



Mistral - Charcoal

*Natural products are manufactured from aggregates sourced locally to the works and contain no pigmentation, therefore colour variation between products from different works is possible.

Mistral Paving setts create a dazzling effect wherever utilised – as their exposed recycled granite aggregates sparkle on the surface. Ideal for use across a variety of applications and environments, Mistral Paving is particularly effective in retail, commercial and civil projects. Mistral Paving is capable of handling all loading requirements while providing an attractive, contemporary finish to any space. There are 3 sizes to choose from – all of which can produce a secure, interlocking paving design when laid. Mistral Paving is available in a choice of 3 colours to suit every environment and aesthetic. Step units can also be purchased to complement paving designs in 2 available colours.

DESCRIPTION

Appearance	Two part unit with textured surface and shouldered edge	
Manufacturing Process	Semi dry pressed & vibrated concrete	
Base Raw Material	Concrete	
Governing Manufacturing Standards	All data where relevant to be established in accordance with BS EN 1338 : 2003	
CE Marking/DOP	https://www.marshalls.co.uk/dop	
NBS Specification	Q24 10 Q24 112	Q24 110 Q24 113

Mistral 160 x 120 x 60

Date Created: 07/02/19

PHYSICAL PROPERTIES

Tolerances	Minimum (mm)	Maximum (mm)
Length	158	162
Width	118	122
Thickness	57	63
Work Dimensions (mm)	160 x 120 x 60	
Nominal Dimensions (mm)	160 x 120 x 60	
Tolerances on Work Dimensions (mm)	Length ± 2 mm, width ± 2 mm, thickness ± 3 mm	
Abrasion Resistance (mm)	≤ 23 mm (Wide Wheel Abrasion Test)	
Durability (Freeze-thaw)	≤ 1.0 kg/m ² as a mean with no individual value > 1.5 kg/m ²	
Material Density	2300 kg/m ³ (typically)	
Slip/Skid Resistance (polished)	Mean polished skid resistance value (PSRV) : > 45	
Slip/Skid Resistance (unpolished)	Mean unpolished skid resistance value (USRV) : > 45 .	
Thermal Conductivity (K value)	Design data as defined to BS EN 13369 : 2013	
Tensile Splitting Strength	Characteristic tensile splitting strength not less than 3.6 MPa. None of the individual results shall be less than 2.9 MPa, nor have a failure load less than 250N/mm of splitting length	

SPECIFICATION

Approx unit weight (kg)	2.6
Emission of Asbestos	No content
External Fire Performance	Deemed to satisfy. See commission decision 2000/553/ECU
Reaction to fire	Class A1, see commission decision 2000/605/EC

SUSTAINABILITY

Breeam	These units can achieve an "A" rated system when used in conjunction with the correct sub-base components
Carbon Footprint	26 kg CO ₂ m ²

APPLICATION

Loading Classification	Category 5 - 1 large goods vehicle per week (0.015 msa)
------------------------	---

SITE WORKS

Coverage	52 no per m ²
----------	--------------------------

SUPPLY

Av. pack size (m ²)	8.2
Av. pack weight (kg)	1100
Packaging	All packs are shrinkwrapped onto pallets for fork off-load or crane off-load if necessary

FURTHER INFORMATION

Cleaning & Maintenance	Cleaning & maintenance details are available on request
Efflorescence	Any product containing cement during its early life may exhibit a temporary white discolouration known as efflorescence. This is not a product fault and will gradually disappear with exposure to natural weathering and trafficking
Weathering	It should be appreciated that with all products weathering and site conditions can cause shade variation to appear across the surface of individual units. This does not in any way affect the performance of the units and any such variation will diminish over a period of time as the product matures.
Product Evolution	Marshall's reserve the right to amend the technical information as deemed necessary and in accordance with the relevant national and international standards without notice. The evolution of new product design is continuous and information is subject to change without notice. Customers should check with the supplier to ensure that they have the latest details
Contact Us	For technical information on the design, specification and construction when utilising the product, contact the Technical Advisory Services Department on 0370 411 2233