



# Marshalls

*Creating Better Spaces*

## INSTALLATION DETAILS FOR SYMPHONY® JOINTING COMPOUND

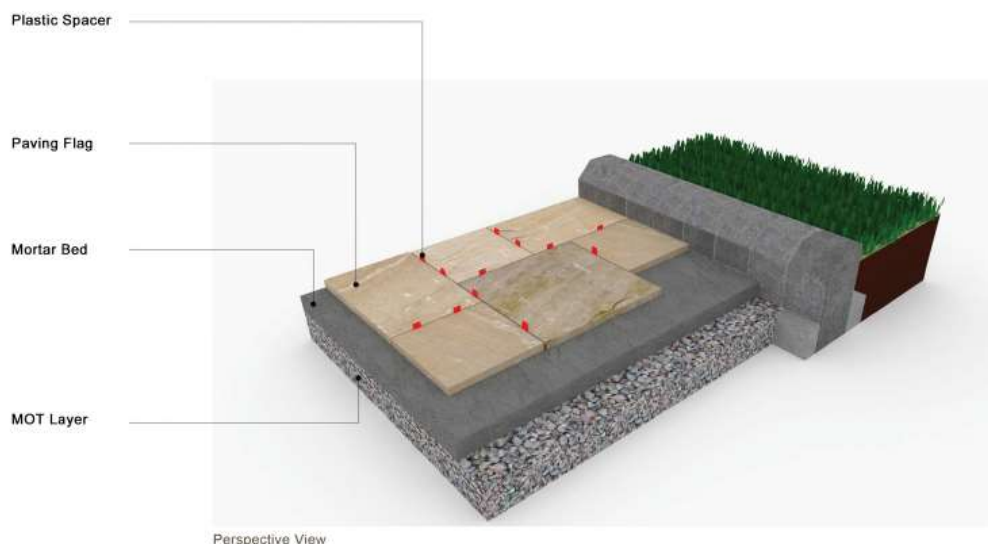
### Health and Safety Information

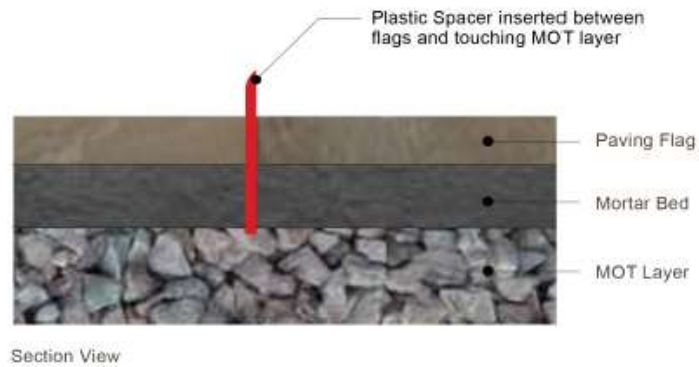
Safe working practices should be employed at all times during the construction process and all necessary Personal Protective Equipment (PPE) should be worn.

### Before using Symphony® Jointing Compound

**PAVING MUST BE LAID ON A FULL BED OF MORTAR WITH SUITABLE DRAINAGE PROVISION THROUGH THE BEDDING LAYER TO THE SUB-BASE AND NEVER ON A FIVE SPOT BED**

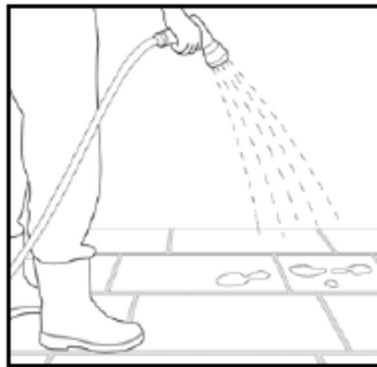
When installing your paving it is recommended you introduce drainage ports. To do this rake out any excess mortar in the joint to the full depth of your chosen paving. Using spacers every 300mm on all sides of your paving. The spacers should be introduced to the full depth of the bedding mortar creating a channel down to the MOT Type 1 to create unhindered flow, see diagram below:



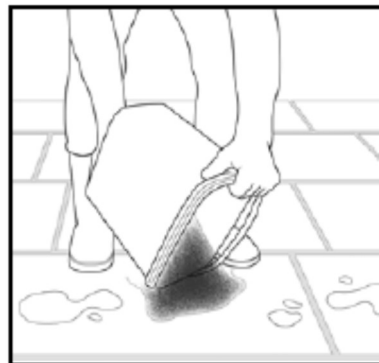


Once the mortar bed has partially cured remove the spacers and introduce Symphony® Jointing Compound.

### Using Symphony® Jointing Compound

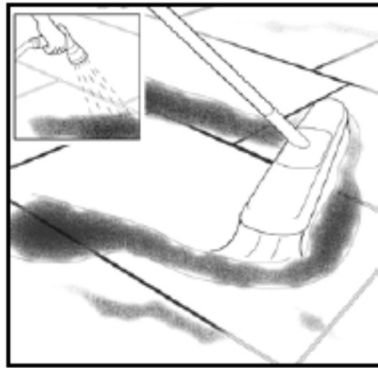


Thoroughly saturate the paving surface. It is impossible to over water the paved area. Failure to wet the paving correctly could result in temporary staining of the paving surface.

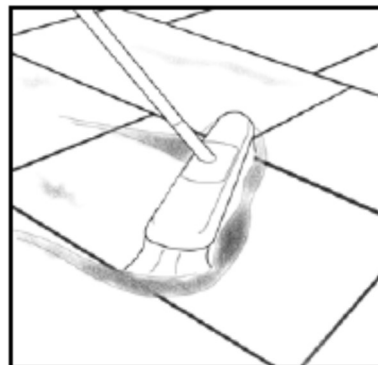


Open the tub and cut open the vacuum bag. Empty the joint compound material onto the paving surface and start to brush into the joints. Continuously keep the paving area saturated with water and so the area doesn't dry out

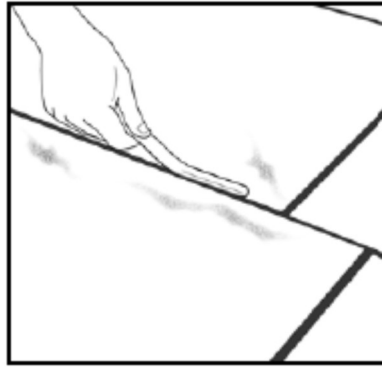
Alternatively to assist the jointing compound into the joint, add water to the compound to turn it into a slurry so it will flow easily into the joint.



Brush the jointing material into the joint areas with plenty of water to allow it to flow into the joints easily. Brush material diagonally (45°) to the joint. Ensure that the joint void is completely full. The jointing material must be used within one hour of opening the vacuum pack.



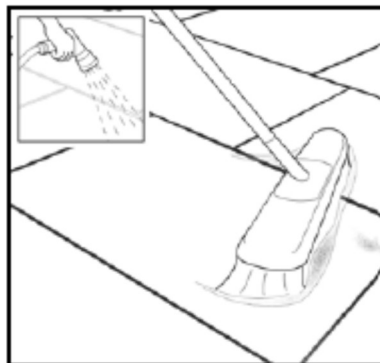
Sweep off any excess jointing compound and store remainder in the tub. Fill tub to the top with water making sure the entire jointing compound is covered by at least 80mm (3 inches) of water. Product can then be stored for up to one year as long as the product remains fully immersed in water.



Strike off the joint using a Marshalltown jointer or similar tool. Top up any sagging joints with more jointing material and strike again if required.

On smaller joints and to get the jointing material deeper into the joint delicately chop in with the side of a trowel or similar tool, being careful not to strike the surface of the paving. Carry out this procedure prior to striking off.

If you require a smoother 'struck' finish to your joint, allow the joint to dry out a little and iron the joint using a Marshalltown jointer or similar.



To finish the process, gently spray the surface with a wide angled spray and brush excess joint compound off the surface using a soft bristled brush.

### **Curing Time**

Symphony<sup>®</sup> jointing compound will be fully load bearing after 3 consecutive days of dry warm weather and humidity equal to or less than 65%.

Please note lower temperatures will lengthen the curing time and higher temperature will accelerate curing time. Additionally, once installed Symphony<sup>®</sup> jointing compound will not start the curing process until dry weather and the cessation of rain.

Minimum laying temperature 3°C.

**Further Information**

For further technical advice, or when confronted by unusual problems or circumstances, please contact Marshalls Technical Advisory Services on 0370 411 2233, or by email on [advisory.services@marshalls.co.uk](mailto:advisory.services@marshalls.co.uk)