

PRODUCT CLASSIFICATION:
B-FOUNDATION/PASSIVE/BOLLARD
 PERFORMANCE RATING:
IWA14-1:2013 BOLLARD
V/7200[N2A]/48/30:1.2

THIS DRAWING IS THE SOLE PROPERTY AND COPYRIGHT OF MARSHALLS STREET FURNITURE AND MAY NOT BE DISCLOSED TO ANY THIRD PARTY OR REPRODUCED IN WHOLE OR IN PART WITHOUT THE PRIOR WRITTEN CONSENT OF AN AUTHORISED REPRESENTATIVE OF THE COMPANY. UNAUTHORISED PARTIAL OR COMPLETE REPRODUCTION, IN EITHER TWO OR THREE DIMENSIONAL FORM, MAY RESULT IN LEGAL ACTION. THE USE OF THIS DRAWING TO OBTAIN QUOTES FROM OTHER SUPPLIERS OTHER THAN MARSHALLS URBAN STRUCTURES MAY RESULT IN LEGAL ACTION.



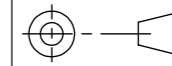
PREMIER WAY
 LOWFIELDS BUSINESS PARK
 ELLAND
 HALIFAX
 WEST YORKS
 HX5 9HT

TEL: 0870 990 7504

EMAIL: info@marshalls.co.uk

NOTES:

1. ALL DIMENSIONS ARE IN MILLIMETRES UNLESS OTHERWISE STATED.
 2. DO NOT SCALE DRAWING.
 3. ALL CONCRETE TO BE IN ACCORDANCE WITH BS 8500
 4. MIXES TO BE REINFORCED CONCRETE - C30/C40
 5. ALL MATERIAL & WORKMANSHIP TO BE IN ACCORDANCE WITH RECOMMENDATIONS OF BS-EN 1192 EUROCODE 2
- Foundation sizes given are for customer guidance and suited to sub-soils with good load bearing capabilities. Where adverse site conditions are met professional advice to be sought.



TOLERANCES: LINEAR 0 : +/-1
 0.0 : +/-0.1
 0.00 : +/-0.01
 ANGULAR +/-0.5°

THIRD ANGLE PROJECTION

Rev	Init	Revision Notes	ER No.	Date
A	MB	FIRST ISSUE	19-0700	26/05/20
B	-	-	-	-
C	-	-	-	-
D	-	-	-	-/-/-
E	-	-	-	-

PRODUCT TYPE:

BRIDGE PROTECTION

IMPACT RATING:

75/30 30°

SLEEVE DETAIL:

Ø219 STAINLESS STEEL

PRODUCT RANGE:

RHINO GUARD

PROJECT NAME:

ULTRA SHALLOW 50

PROJECT NUMBER

SHALLOW FRAME

SHEET TITLE:

HVM ULTRA SHALLOW 50 - FOOTWAY - Ø219

DRAWING NUMBER:

HVM-72-30-FW-SS

DRAWN BY

MB

DATE

26/05/20

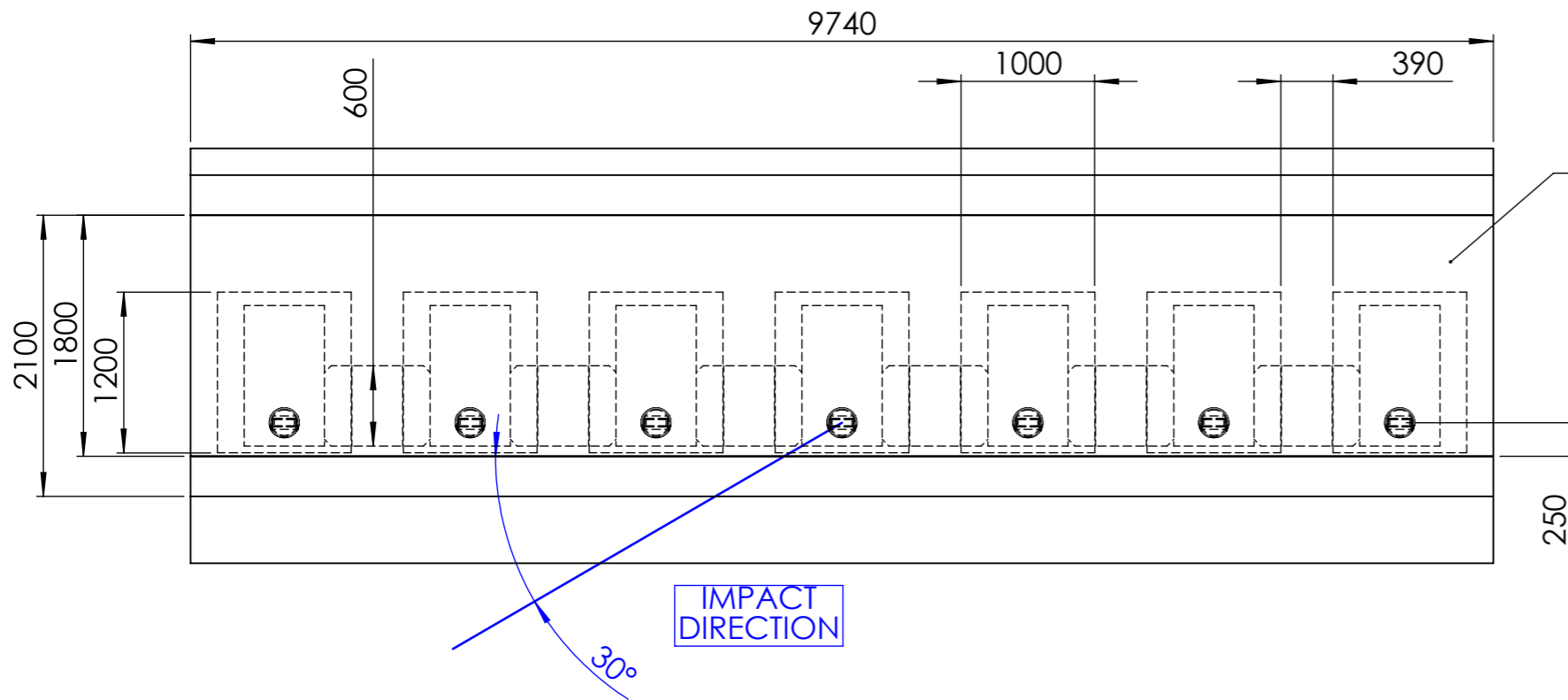
SCALE

1:50@A3

REVISION

[A]

SHEET 1 of 1

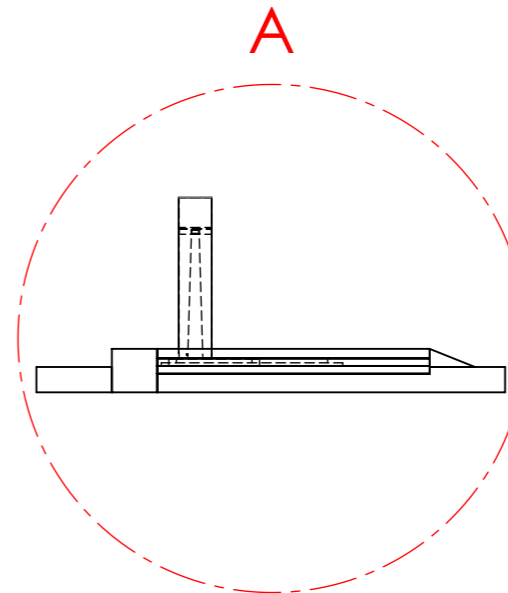
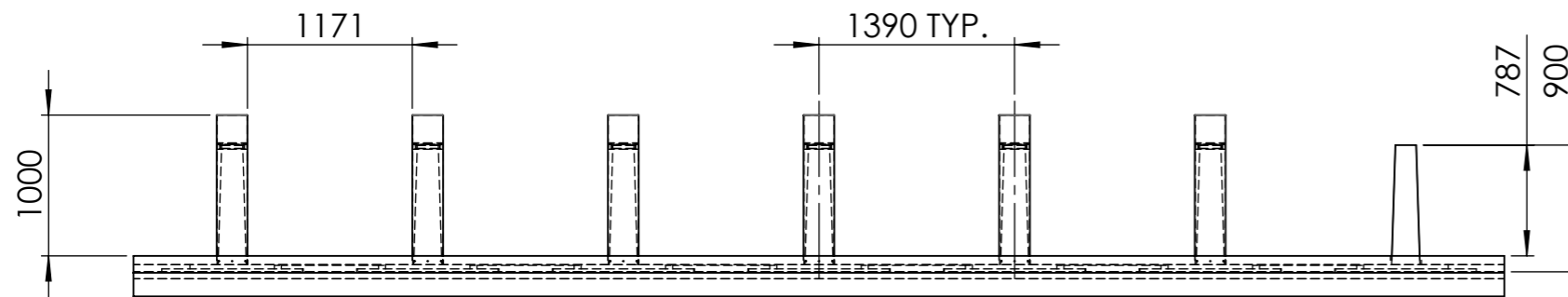


FINISHED GROUND.
 E.G. 900 x 600
 PAVING FLAGS

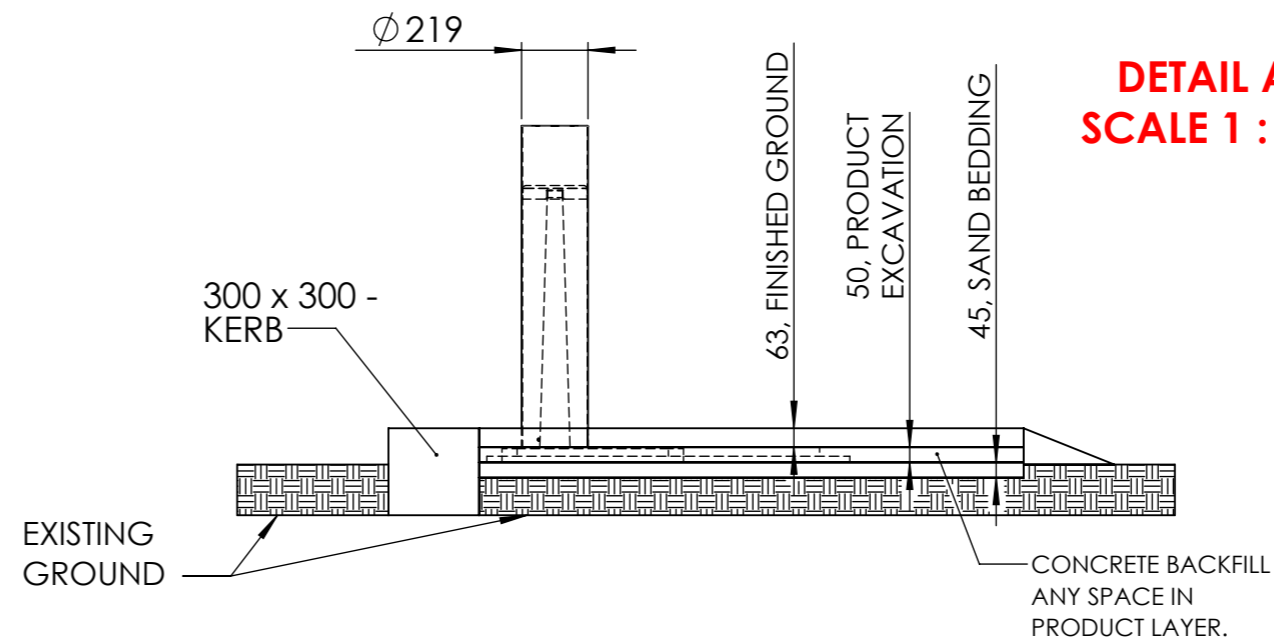
**NOTE: Ø219 STAINLESS
 STEEL SLEEVE SHOWN.
 OTHER SLEEVES ARE
 AVAILABLE.**

IMPACT
 DIRECTION

30°



**DETAIL A
 SCALE 1 : 25**



PRODUCT WEIGHTS:

- HVM FRAME - 390KG
- CONNECTION BRACKET - 95KG
- SLEEVE - 16KG

INSTALLATION INSTRUCTIONS:

- EXCAVATE SUITABLE FOUNDATION FOR BOLLARDS
- CONNECT LIFTING EQUIPMENT TO EACH UNIT & LAY IN POSITION
- FASTEN UNITS TOGETHER WITH BRACKETS, NUTS AND WASHERS.
- CAST CONCRETE AROUND AND ON TOP OF PRODUCT TO 50mm LEVEL. C30/C40 SLUMP MINIMUM
- ALLOW CONCRETE TO CURE.
- ADD FERROCAST SPACING RING TO TOP OF UPRIGHT.
- SLIDE OVER SLEEVE AND SECURE AT BASE WITH SUPPLIED M8 FIXINGS.
- FINISH SURFACE LEVEL IN ACCORDANCE WITH SITE REQUIREMENTS, 63mm.
- GROUT AROUND BASE OF SLEEVE TO SECURE.