



# JOINTING SOLUTIONS GUIDE



**Marshall's**

*Creating Better Spaces*





# The Marshalls Jointing Range

## Welcome to the family...

We have carefully selected a fantastic range of jointing products to complement our range of paving. Allowing you to create the perfect finish for your new patio or driveway.

This guide will take you through our range, the differences between them and advise you on which jointing product works best with your chosen Marshalls paving.

As added reassurance, our family of jointing products are all protected by a 2 year guarantee.\*

\*Only valid when installed by a Marshalls Register Installer or where a Hard Landscaping Guarantee has been purchased.  
Excludes joint filling sand.





## Joint Filling Sand

- Sand based
- Use on driveways and some patio paving
- Quick and easy to apply



## Weatherpoint® 365

- Resin based
- Use on most patio paving
- Can be used in wet and dry conditions
- Suitable for DIY and trade professionals



## Symphony Jointing Compound

- Resin based
- Use on all porcelain patios
- Can be used in wet and dry conditions
- Suitable for DIY and trade professionals



## Drivesys® Jointing Compound

- Resin based
- For use with Drivesys® Driveways
- Can be used in wet and dry conditions



## Exterior Jointing Grout

- Cement based
- Use with patio and driveway paving
- Exceptional bond strength
- Install required by a landscaping professional



# Joint Filling Sand

Perfect for projects with concrete block paving.

Complete your project using Marshalls Joint Filling Sand. A special kiln dried sand with a fine grading, which falls easily into joints. Available in two colours - Red and Golden. Marshalls Joint Filling Sand can be used for concrete block paving, sawn sandstone setts or small pressed patio paving stones.

Colour	Paving thickness	Coverage per bag	Joint size
Red Golden	50mm	6 - 8m <sup>2</sup>	up to 5mm
	60mm	4.5 - 6.5m <sup>2</sup>	
	80mm	3.5 - 5.5m <sup>2</sup>	

**Top tip:** Kiln dried sand contains silica, always wear a dust mask.

**Please refer to specific installation guidelines before use**



Red Sand



Golden Sand





# SYMPHONY® Jointing Compound

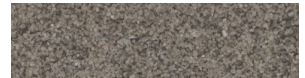
Contemporary jointing compound for use with our porcelain paving ranges.

Symphony® Jointing Compound has been developed specifically for use with our porcelain paving to give a narrow contemporary joint.

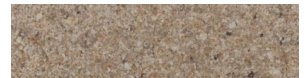
Colour	Weight per tub	Coverage per tub	Joint size
Stone Grey Buff	20kg	16m <sup>2</sup> - 23.4m <sup>2</sup> *	3 - 8mm

\*coverage varies based on joint width. Minimum 20mm joint depth for paving

**Please refer to specific installation guidelines before use**  
**24 month shelf life from date of manufacture**

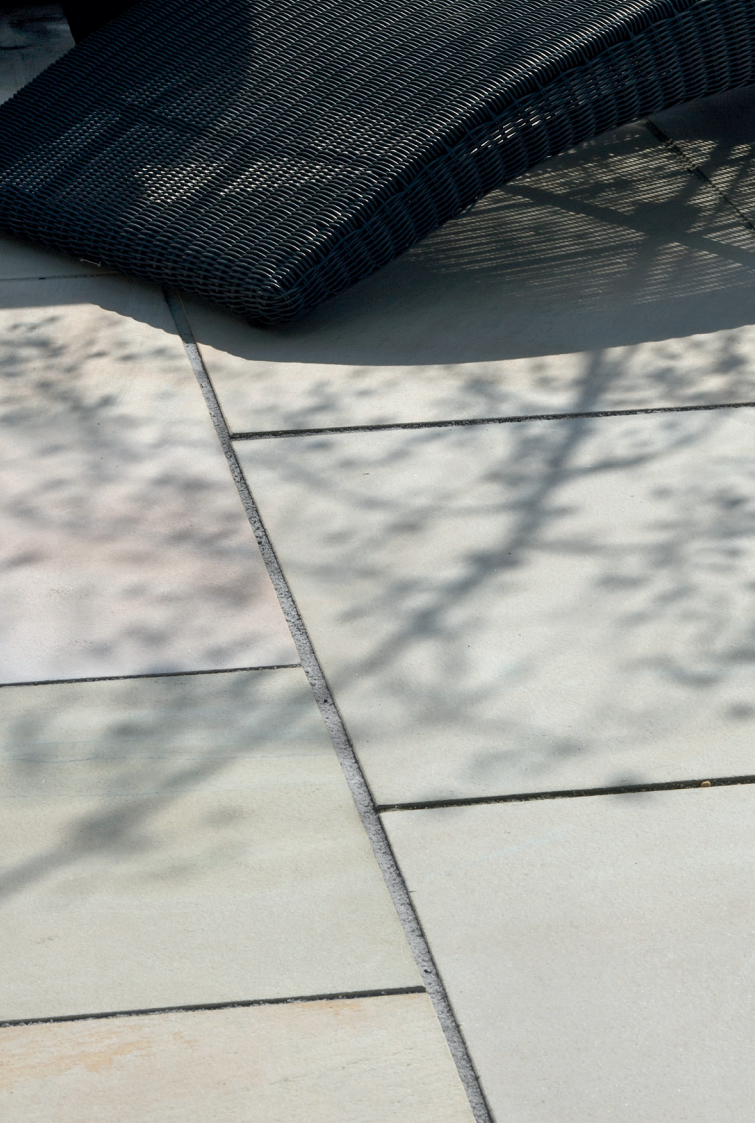


Stone Grey (SGR)



Buff (B)





# Weatherpoint® 365

All weather jointing material.

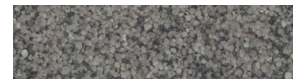
Weatherpoint® 365 all weather jointing material speeds up installation times, reduces labour involvement and can be laid all year round, come rain or shine. With no mixing or waste, Weatherpoint® 365 will withstand light pressure washing.

Suitable for use with all types of paving materials, **except** Granite Eclipse, Lazaro Marble and Drivesys® products.

Colour	Weight per tub	Coverage per tub*	Joint size
Stone Grey Buff	15kg	7m <sup>2</sup>	10 - 15mm

\*Coverage is a guide based on a 450 x 450 plan size with 10mm joints at 35mm deep.  
Minimum 20mm joint depth for paving

**Please refer to specific installation guidelines before use**  
**24 month shelf life from date of manufacture**



Stone Grey (SGR)



Buff (B)





# Drivesys® Jointing Compound

Specifically developed for use with Marshalls Drivesys® range.

Using Drivesys® Jointing Compound along with our patented Drivesys® blocks delivers unrivalled performance to your driveway. Specifically developed for Drivesys®, our Jointing Compound will enhance the performance of our product, giving a long lasting finish.

Colour	Weight per tub	Coverage per tub	Joint size
Stone Grey	15kg	5m <sup>2</sup>	5 - 30mm

**Please refer to specific installation guidelines before use**  
**24 month shelf life from date of manufacture**



Stone Grey (SGR)





# Marshall's Exterior

## Cement based jointing grout.

Marshall's Exterior Jointing Grout leaves a contemporary finish to all rigidly installed paving and driveway\* products. Its quick setting formula means it will start curing in 15 minutes and accepts light foot traffic after only 1 hour, dependent on temperature and humidity.

**Please follow the installation guidelines.**

Colour	Weight per tub	Joint size
Charcoal Natural	25kg	3 - 50mm Coverage 25m <sup>2</sup> **

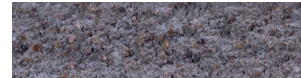
\*Not suitable for use with Drivesys

\*\*Based on Sawn Versuro 560 x 560 with a joint width of 10mm. Contact us for our handy tool to help calculate how many tubs you will need for your job

**Please refer to specific installation guidelines before use**  
**8 month shelf life from date of manufacture**



Visit Marshall's YouTube channel  
to view the MEJG installation video



Charcoal (CH)



Natural (N)



# Jointing Mythbusters

## All jointing compounds are the same

Every Marshalls Jointing Compound is made specifically for the material they will be installed with. Only the finest materials are used to ensure joints are kept in sound condition time after time.

As jointing materials are open to the elements and come into contact with things such as dirt and debris, your joints will naturally weather over time and may turn green or change colour. This process is completely normal and just means you need to maintain the area and give it a clean. We would recommend using Marshalls Green-Away® if you want to remove mould, algae and lichen from garden surfaces.

## There's no need to use jointing compounds, sand works fine

Depending on the ground conditions and how you're going to use your patio or driveway, Joint Filling Sand can work just as effectively as resin or cement based jointing compound, however, our installation matrix on page 10 will show you the most effective jointing for the product you're installing.

## There's no maintenance required with jointing compounds

Unfortunately, no product used outdoors is maintenance free as its open to the elements and will weather over time. Our advice would be to always check your jointing material after cleaning to ensure it's still intact, and don't use a power washer directly on joints. Where the joints have failed, they will need replacing with new.

**Use our installation matrix on page 10 to determine the most effective jointing for your project.**





Installation Matrix	Kiln Dried Sand	Weatherpoint® 365	Symphony® Jointing Compound
Ideal for Paving Installations		✓	✓
Ideal for Driveway Installations	✓		
SYMPHONY® Plus Paving	✓		✓
Porcelain Paving		✓	✓
Sandstone Paving		✓	
Limestone Paving		✓	
Granite Paving			
Marble Paving			
Slate Paving		✓	
Concrete Paving		✓	
Natural Stone Driveway Setts			
Sawn Granite Driveway Setts			
SYMPHONY® Plus Driveways	✓		
Drivesys® Driveway System			
Driveline® Driveways	✓		
Drivesett® Driveways	✓		
Standard Block Paving	✓		
Application			
Joint Width	2-5 mm	10-15 mm	3-8mm & min 20mm depth
Bed Type	Flexible	Rigid	Rigid
Installation	Brush	Brush	Brush
Installation Temperature		3-25°C	3-25°C
Weather Conditions	Dry	Dry/Light Rain	Dry/Light Rain
Coverage (approx.)	approx 4.5-6.5m²	7m²	16-23.4m²
Technical Difficulty (★ = easy ★★★★★=hard)	★	★★	★★
Cure Time (depending on weather conditions)	n/a	24 hours crusting, 30 days fully cured	24 hours crusting, 30 days fully cured

Drivesys® Jointing Compounds	Exterior Jointing Grout
✓ Drivesys® only	✓
	✓
	✓
	✓
	✓
	✓
	✓ Smooth surface only
	✓
	✓
✓	
5-30 mm	3-50mm & min 20mm depth
Semi-Flexible	Rigid
Brush	Squeegee or Brush
3-25°C	5-20°C
Dry/Light Rain	Dry, no rain within 6 hours of install
5m² based on Original Cobble	25m² (see paving calculator or call technical helpline)
★★★	★★★★★
72 hours crusting, 30 days fully cured	Initial 1 hour





To find your nearest Marshalls stockist or find a recommended installer, call: **0345 820 5000** (Calls may be monitored or recorded)

For information, advice and useful tips to realise your own ideas, visit: **[www.marshalls.co.uk/homeowners](http://www.marshalls.co.uk/homeowners)**

Landscape House, Premier Way,  
Lowfields Business Park, Elland  
HX5 9HT, United Kingdom

A SUBSIDIARY OF MARSHALLS PLC  
© COPYRIGHT MARSHALLS 2020

