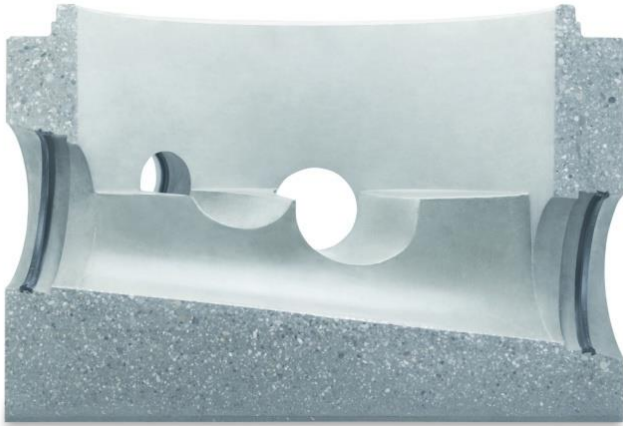


The Sealed Manhole System



The Perfect Manhole System

Watertight, bespoke bases in 1200mm, 1500mm, 1800mm
Requiring no concrete surround as widewall solution



The Sealed Manhole System



DN1200: 100-300mm outlet range

DN1500: 100-450mm & 525-675mm (wider wall unit)
outlet range

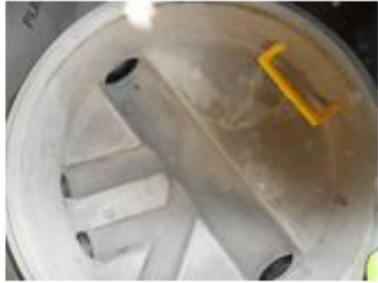
DN1800: 100-900mm outlet range

Heights of bases vary with outlet sizes

Units supplied complete with sealed inlets and outlets to connect to customers confirmed pipe types



The Sealed Manhole System Endless Possibilities



Quick and Easy Site Installation, saving on costs and need for skilled labour

Barnsley site – 17:00 hours



17.25 hours – manhole complete