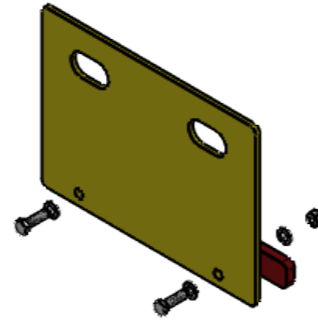


Component BOM Table					
ITEM NO.	AX AJB	Description	Approx. Weight	QTY	Despatch Component Check
1	DI-SE-00113	DIST V-Tim 470 CB MS Top 1.3m IR 90° Iroko FSC G&PC	124	1	
2	DI-SE-00026	DIST V-Tim 470 Bench & Seat MS L-Leg SM G&PC	9	3	

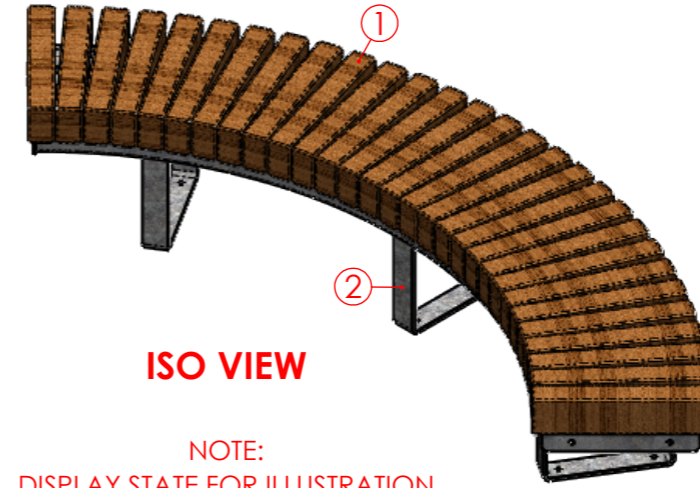


**LIFTING KIT ASSY  
(EXPLODED VIEW)**  
SCALE 1 : 10

**OPTIONAL EXTRA  
LIFTING KIT SET**

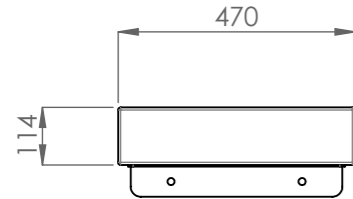
LIFTING KITS ARE **NOT** SUPPLIED AS STANDARD BUT ARE SOLD AS AN OPTIONAL EXTRA TO HELP AID INSTALLATION. PLEASE CONSULT WITH A MEMBER OF THE SALES TEAM WHEN PLACING AN ORDER AND REFERENCE DI-SE-00108.

NOTE: EACH LIFTING KIT SET CONTAINS 2 OFF LIFTING KITS.

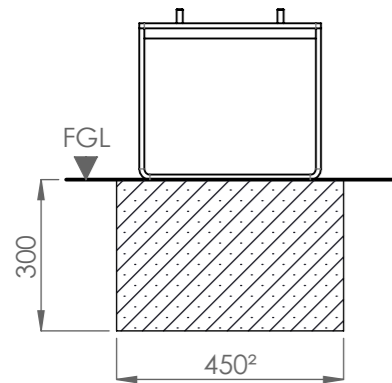
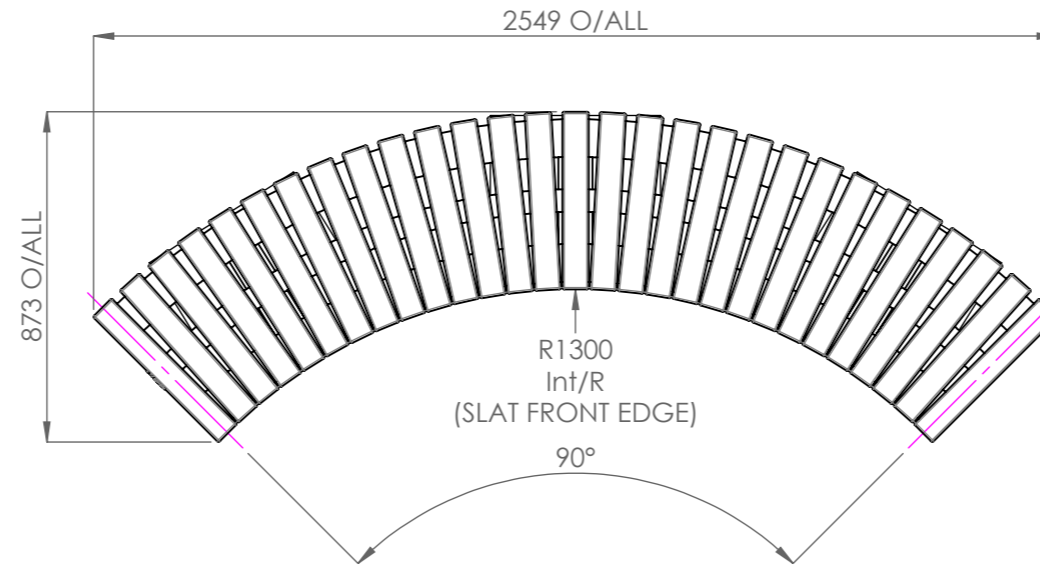


**ISO VIEW**

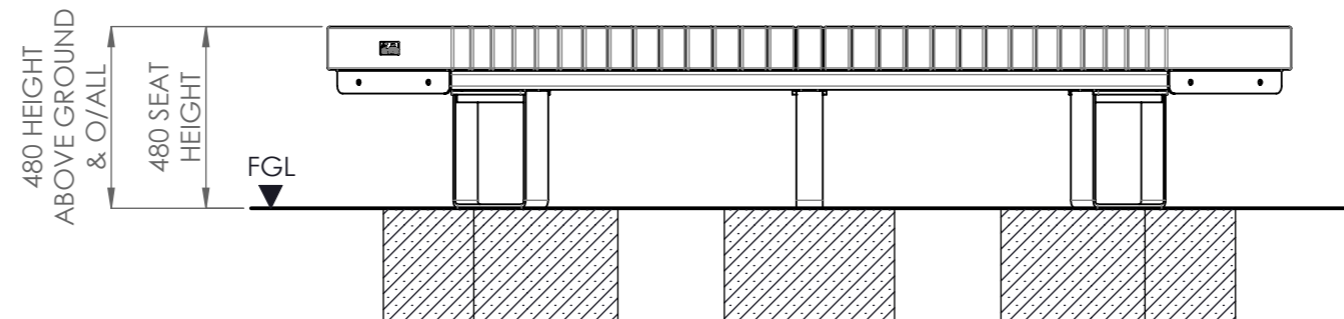
NOTE:  
DISPLAY STATE FOR ILLUSTRATION  
PURPOSES ONLY



**470 BENCH TOP TYP  
SIDE PROFILE**  
SCALE 1 : 15



**TYP FOUNDATION DETAIL**  
SCALE 1 : 15



**PRODUCT SPECIFICATION**

**TIMBER**

**MATERIAL:**

Slats - Iroko FSC

**FINISH:**

Planed & untreated.

**EDGE DETAIL:**

Pencil (all edges).

**STEELWORK**

**MATERIAL:**

Sub Frame & Legs - Mild Steel

**GRADE:**

Sub Frame - S235 & S275  
Legs - S275

**FINISH:**

Hot Dipped Galvanised (BS EN ISO 1461:1999) and Polyester Powder Coated to a standard catalogue colour (default RAL 9007 Matt).

**DIMENSIONS:**

Width Overall: 873mm  
Length Overall: 2549mm  
Seating Height: 480mm  
Height Above Ground: 480mm  
Height Overall: 480mm

**FIXING TYPE:**

Surface Mount

**APPROX WEIGHT:**

151 kg

**FOUNDATIONS:**

Concrete grade C16/20 mass fill.

Foundation sizes given are suited to sub-soils with good load bearing capabilities. Where adverse site conditions are met professional advice to be sought.

**INSTALLATION:**

1. Excavate suitable foundation as shown.
2. Cast concrete C16/20.
3. Allow foundations to cure.
4. Position product and bolt to pads.

NOTE: Lifting Kits are **not** included as standard and must be purchased separately as an optional extra.

For operation and maintenance please refer to the **Marshalls Street Furniture Maintenance Guide**.

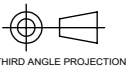
Unless otherwise stated: All Dimensions are in Millimetres

Marshalls PLC reserves the right to change the specifications of any product detailed without prior notice.

Rev	GE	Main profile thickness reduced to 3mm. Spacers removed.	26/11/2020
Rev	Init	Revision Notes	ER No. Date

**Title:**  
DIST V-Tim 470 CB MS 1.3m IR 90° LL SM  
Iroko FSC G&PC

**Drawing No:**  
**PS-DI-SE-00096**



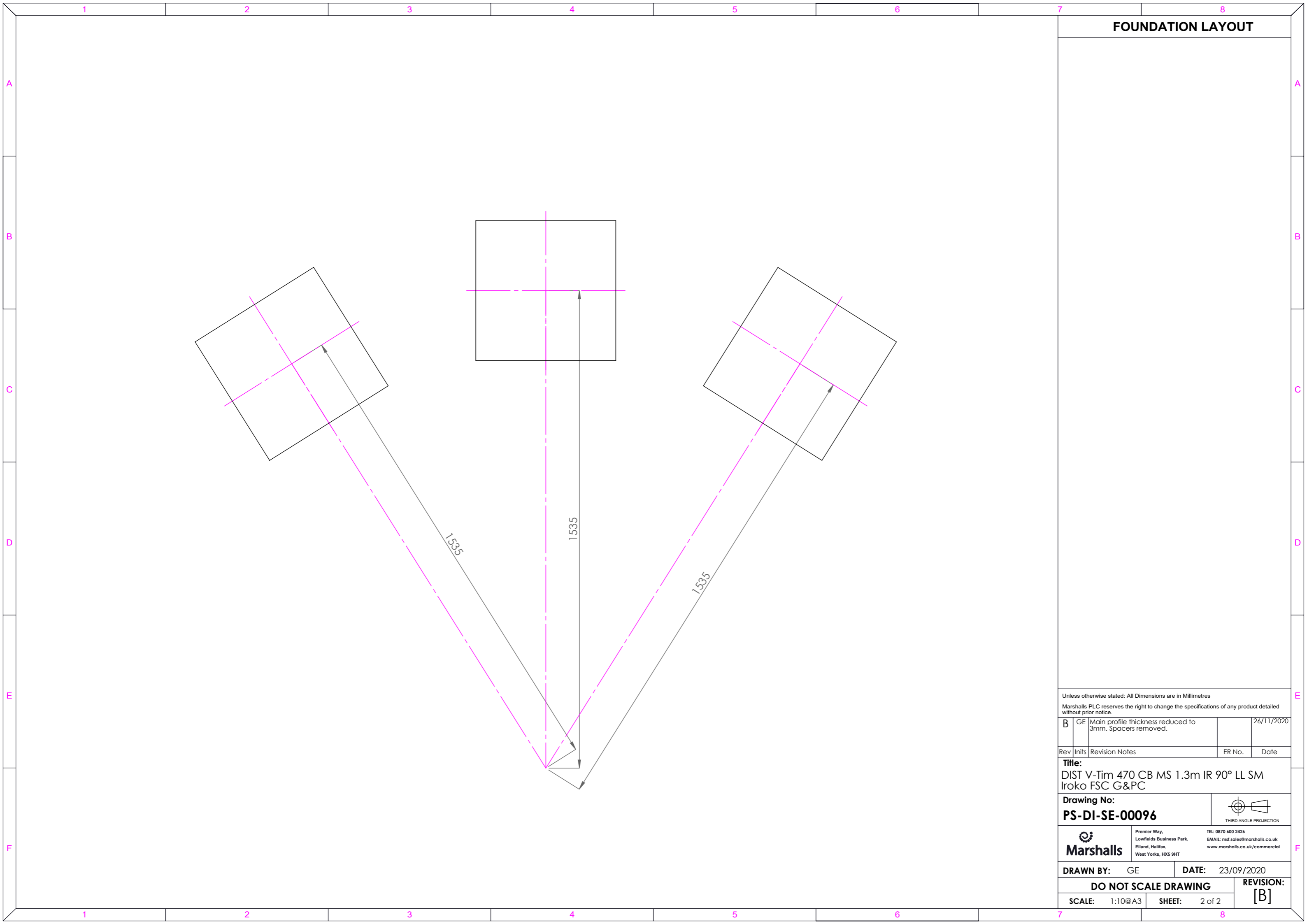
**Marshalls**  
Premier Way,  
Lowfields Business Park,  
Elland, Halifax,  
West Yorks, HX5 9HT  
TEL: 0870 600 2426  
EMAIL: mst.sales@marshalls.co.uk  
www.marshalls.co.uk/commercial

**DRAWN BY:** GE **DATE:** 23/09/2020

**DO NOT SCALE DRAWING**

**SCALE:** 1:20@A3 **SHEET:** 1 of 2

**REVISION:**  
[B]



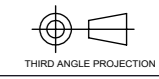
**FOUNDATION LAYOUT**

Unless otherwise stated: All Dimensions are in Millimetres  
 Marshalls PLC reserves the right to change the specifications of any product detailed without prior notice.

Rev	Units	Revision Notes	ER No.	Date
B	GE	Main profile thickness reduced to 3mm. Spacers removed.		26/11/2020

**Title:**  
 DIST V-Tim 470 CB MS 1.3m IR 90° LL SM  
 Iroko FSC G&PC

**Drawing No:**  
**PS-DI-SE-00096**



	Premier Way, Lowfields Business Park, Elland, Halifax, West Yorks, HX5 9HT	TEL: 0870 600 2426 EMAIL: <a href="mailto:mst.sales@marshalls.co.uk">mst.sales@marshalls.co.uk</a> <a href="http://www.marshalls.co.uk/commercial">www.marshalls.co.uk/commercial</a>
	DRAWN BY: GE      DATE: 23/09/2020	

<b>DO NOT SCALE DRAWING</b>		<b>REVISION:</b> [B]
<b>SCALE:</b> 1:10@A3	<b>SHEET:</b> 2 of 2	