



**Marshall's**

Landscape Protection

**Bespoke Furniture and HVM  
Solutions** to bring your visions to life

- 4 Introduction**
- 6 Sustainability**
- 8 Our bespoke process**
- 10 Design development**
- 12 Material selection**
- 14 Personalising your designs**
- 16 Product testing & prototyping**
- 18 Production & Project Management**
- 20 Installation**
- 22 Installation process**
- 24 Landscape Protection**
- 26 Raised Granite Planters & Rain Gardens**
- 28 The Perennial Planter System®**

Street furniture	Landscape Protection
<b>32</b> Wellington Place	<b>56</b> Mamsha AlSaadiyat
<b>34</b> Time Square, Bridge Street Quarter	<b>58</b> Shakespeare's Birthplace
<b>36</b> Central Promenade & Spanish City	<b>60</b> Windsor Castle
<b>38</b> Gloucester Transport Hub	<b>62</b> Devonshire Park Theatre
<b>40</b> Leicester Square	<b>64</b> Cavendish
<b>42</b> Birmingham University	<b>66</b> Etihad Towers, Conrad Hilton Hotel
<b>44</b> Gateshead Quays	<b>68</b> Elizabeth Line
<b>46</b> Otley Waterfront	
<b>48</b> Maritime Streets	
<b>50</b> Elephant & Castle	
<b>52</b> Dover Port	
<b>54</b> Exhibition Road	







**We believe that every space should be 100% individual.** We seek inspiration in the character, history and distinctive culture unique to each project, whilst ensuring that the overall aims and aspirations for the space are achieved.



# An introduction

**Marshalls has been manufacturing hard landscaping materials for over 130 years and has become the leading supplier of products that create our urban environment.**

Marshalls Landscape Protection offers a design led approach of highly effective protective and non-protective street furniture to blend seamlessly into urban landscape design, creating public places which are safe, harmonious and inviting, **keeping people safe... not scared®**.

Your options don't just end with our standard products. Using the latest technologies and craftsmanship, we can create bespoke items that coordinate beautifully with the surrounding landscape.

No matter what your artistic vision, whether it's drawn up in CAD or lodged firmly in your imagination, our experts can transform even the most ambitious ideas into commercially viable delivered solutions, managing the process right through from concept drawing to installation, in line with your lead times.



# Sustainability

We help to build safe, sustainable and beautiful spaces for everyone.

Our approach to sustainability is underpinned by our belief in doing the hard work in areas that are material to our business and our stakeholders, by working with leading organisations and by getting external validation.

We make the conscious choice to always do the right things, for the right reasons, in the right way. We call this The Marshalls Way.



**ISO50001**, which we achieved and maintained since 2015, enables organisations to establish the systems and processes necessary to continually improve energy performance

SBTi targets to **reduce Scope 1 and 2 greenhouse gas emissions** 40% per tonne of production by 2030



100% of our employees are paid at, or above, **the Living Wage Foundation level**



We achieved, and have since maintained, **ISO14001 Environmental Management** since 2000. The intentions of **ISO14001** is to achieve a balance between the environment, society and the economy is considered essential to meet the needs of the present without compromising the ability of future generations.

This international standard provides organisations with a framework to **protect the environment** and respond to changing environmental conditions in balance with socio-economic needs.



All our production plants now use **100% renewable energy**



We launched the highly regarded **Power of Logistics** programme to tackle Modern Slavery and led the sector in tackling the issue in the UK

We have eradicated child labour from Tier 1 of our Indian Sandstone supply chain – this is really important to us and our commitment to respecting **human rights** is central to our business



All our Marshalls branded Landscape Protection and Street Furniture products are **made in mainland Britain**



We are proud to have been **FSC®-certified** since 2017. All Marshalls manufactured street furniture products that include wood elements are produced using only FSC®-certified (FSC-C133609) hardwood and softwood timber from **well managed forests** and other controlled sources.



100% of concrete and natural stone products are **fully recyclable**

We're proud to pay our fair share of tax – we've kept the **Fair Tax Mark** since 2015





Our specialists can **bring your visions to reality**, managing the process from concept design through to installation.



### 1. Design development

Our in-house specialist design team can help turn a simple sketch into a specification drawing, suggesting design recommendations along the way to achieve the best possible results.



### 2. Material selection

Our experts can help you choose the most suitable material for your project, ensuring it is fit for purpose whilst meeting the aesthetic design and budget requirements.



### 3. Personalising your designs

We can help you bring your products to life with the inclusion of branded customisation, graphics and personalisation.

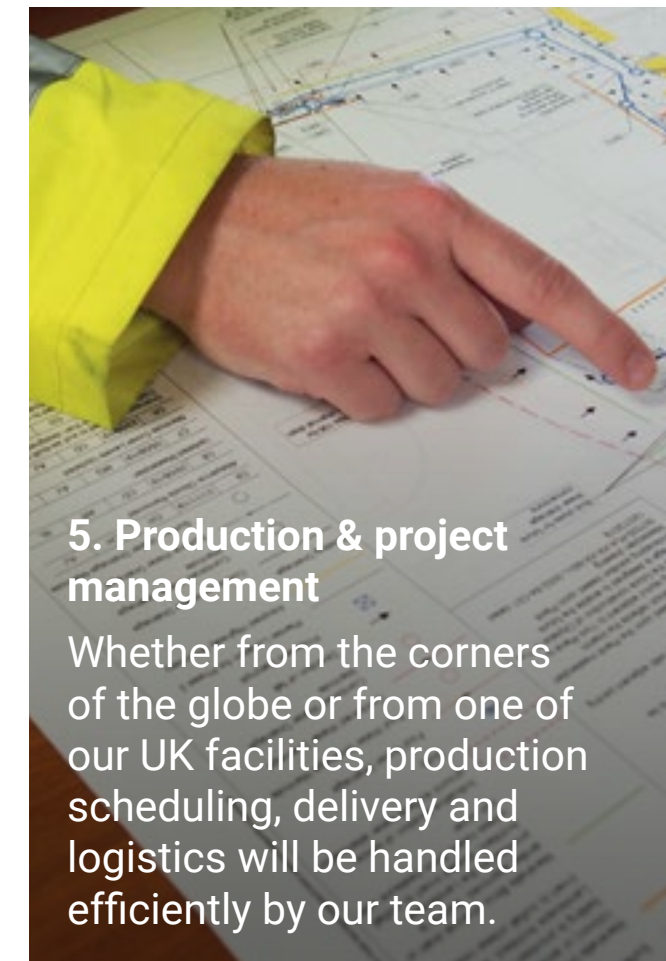
Throughout the process we like to **think outside the box** and push boundaries.

### 4. Product testing & prototyping

For extra peace of mind we can provide 3D renders to help you visualise products in a particular environment. We can also produce prototypes to test the design before production commences.

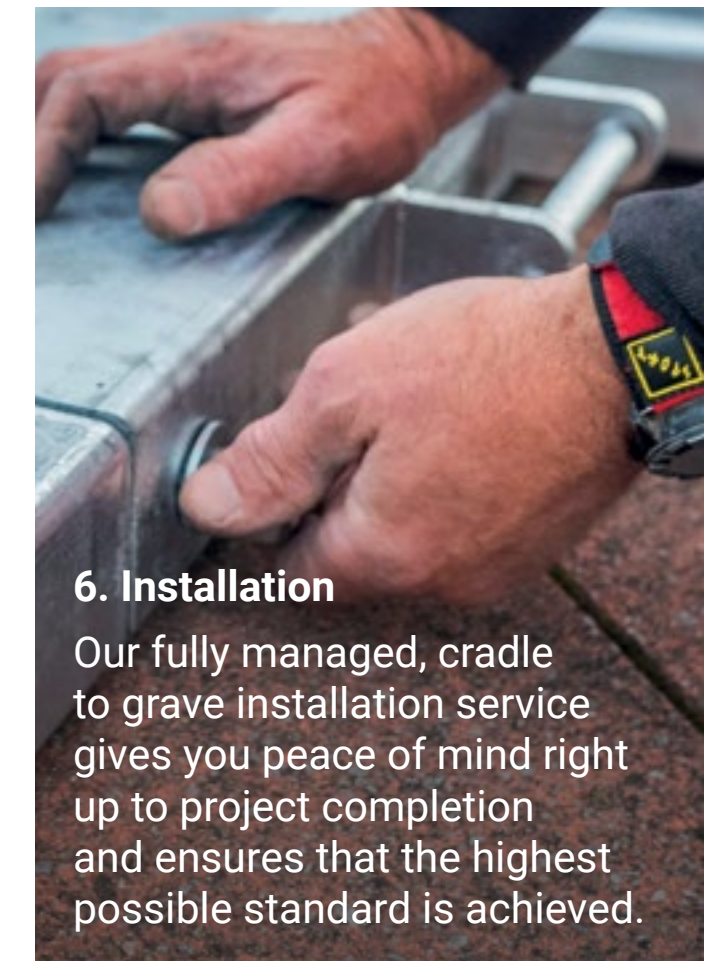


# Our bespoke process



### 5. Production & project management

Whether from the corners of the globe or from one of our UK facilities, production scheduling, delivery and logistics will be handled efficiently by our team.



### 6. Installation

Our fully managed, cradle to grave installation service gives you peace of mind right up to project completion and ensures that the highest possible standard is achieved.



# Design development

Our specialists can bring your visions to reality. Whether your starting point is a fully detailed design, a hand-drawn sketch or even simply an idea; we have the knowledge and skills to successfully transform your ideas into deliverable product solutions.

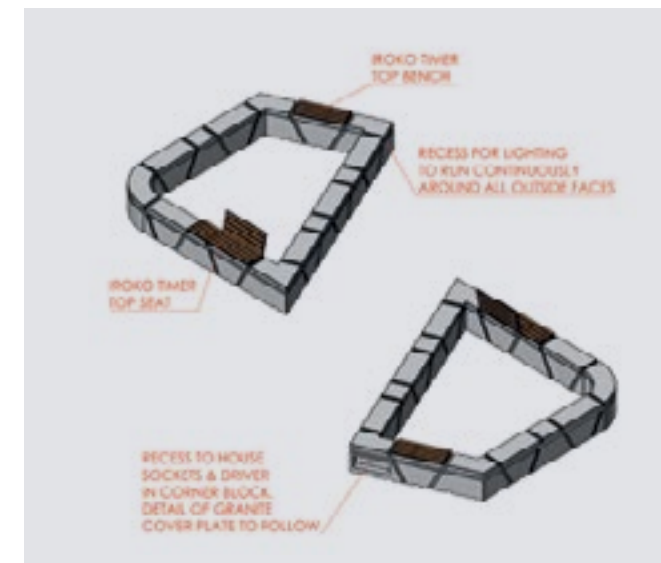
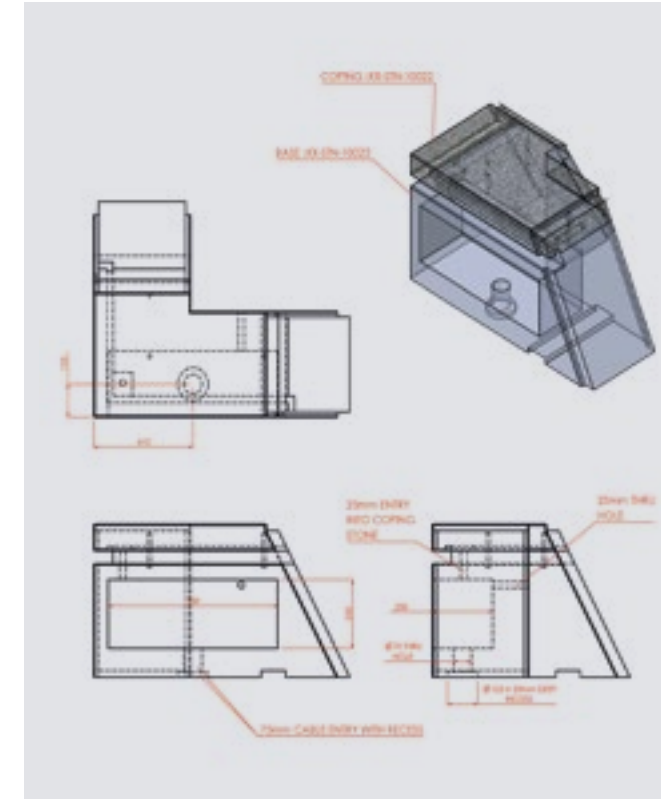
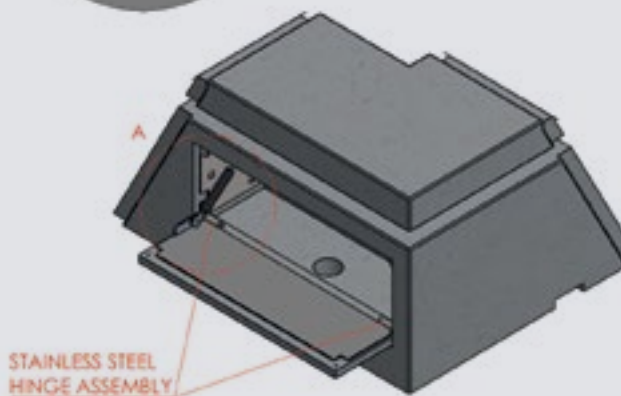
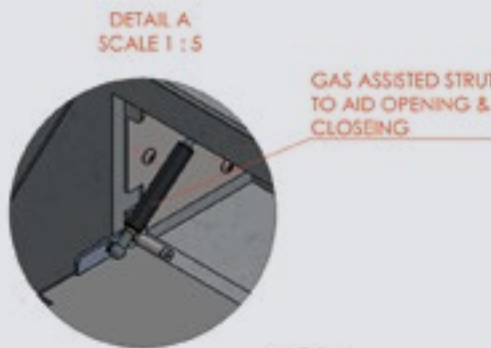
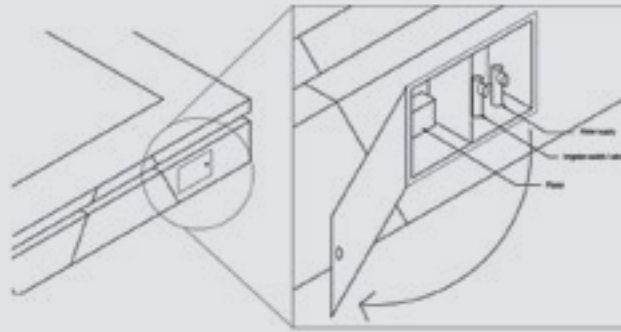
As soon as we have details of the design and project requirements, our highly skilled product design team will create specification drawings and provide the costings for client approval. Based on our expert knowledge we will also suggest design modifications and recommendations along the way, in order to achieve the best possible results.

Design intent is respected at all times and we ensure regular, open communication and close collaboration in order to reap the best possible outcome and meet the needs and expectations of our customers and stakeholders.

Concept design drawings  
by Gillespies Leeds



Development & construction drawings  
by Marshalls

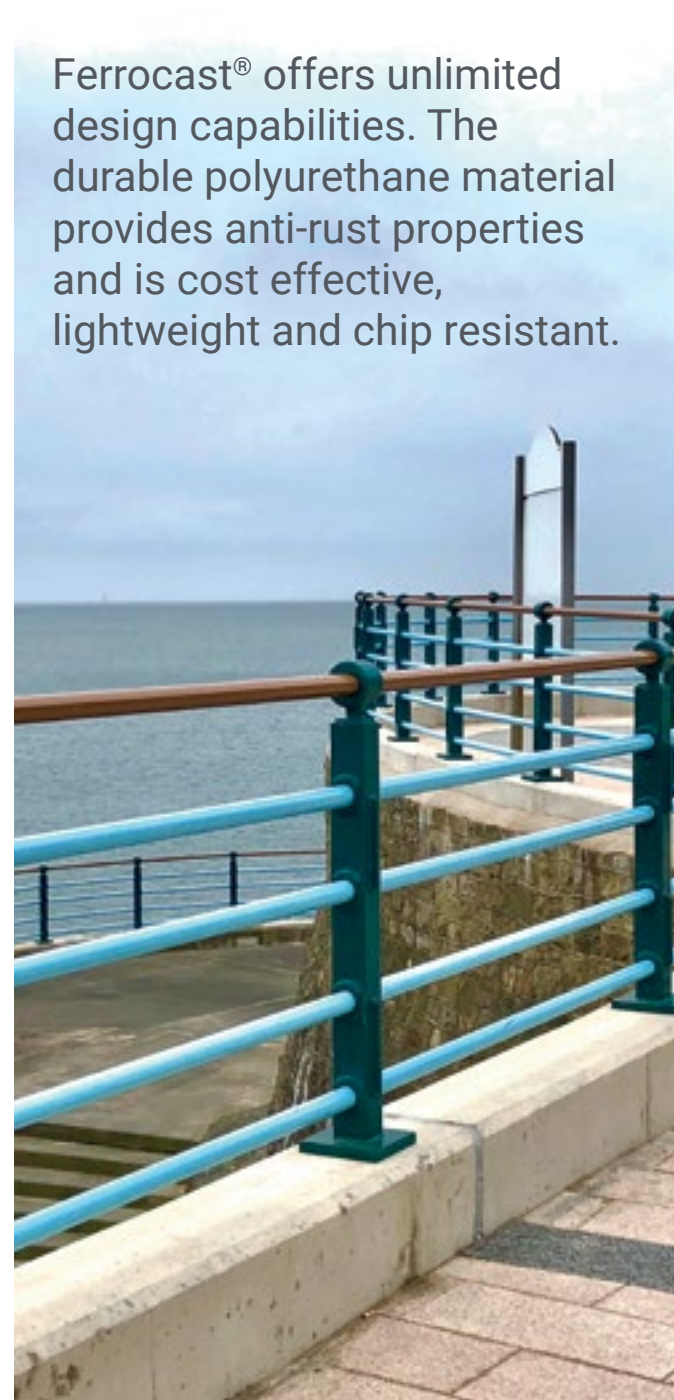
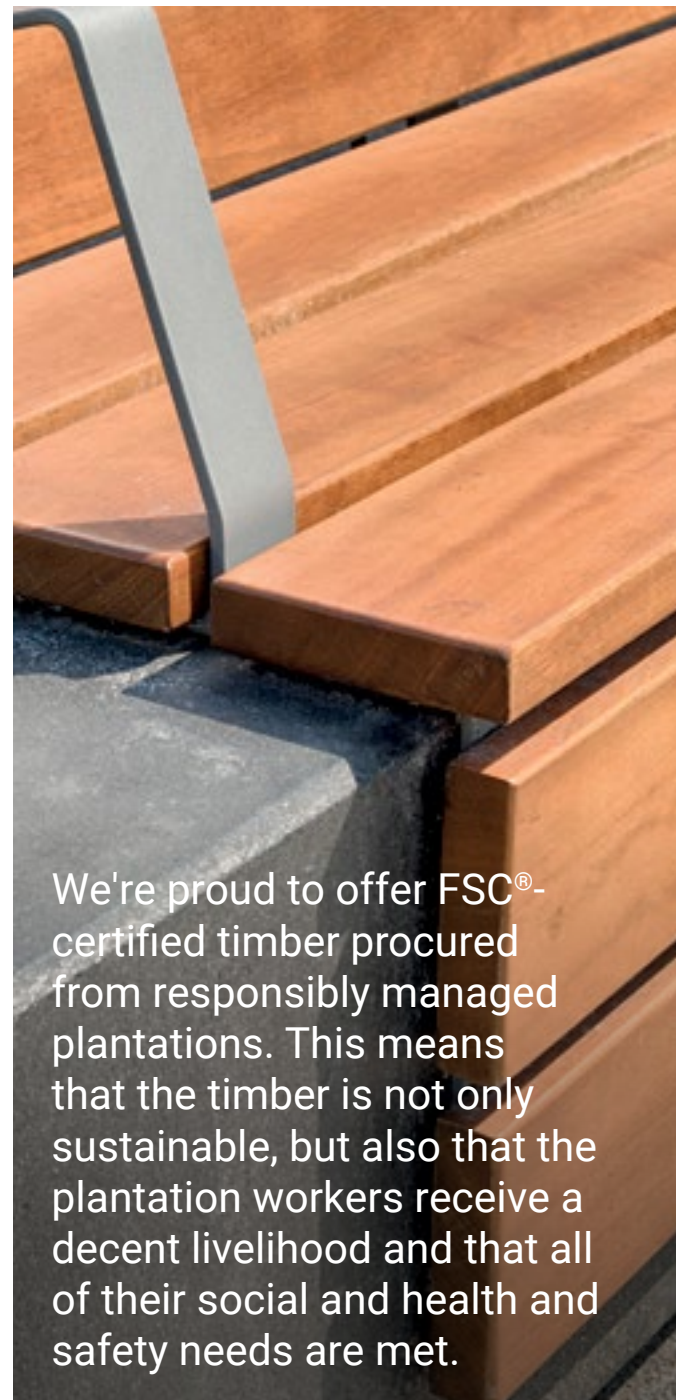


Design development and completion of  
**Warrington Bridge Street Quarter**



Completion



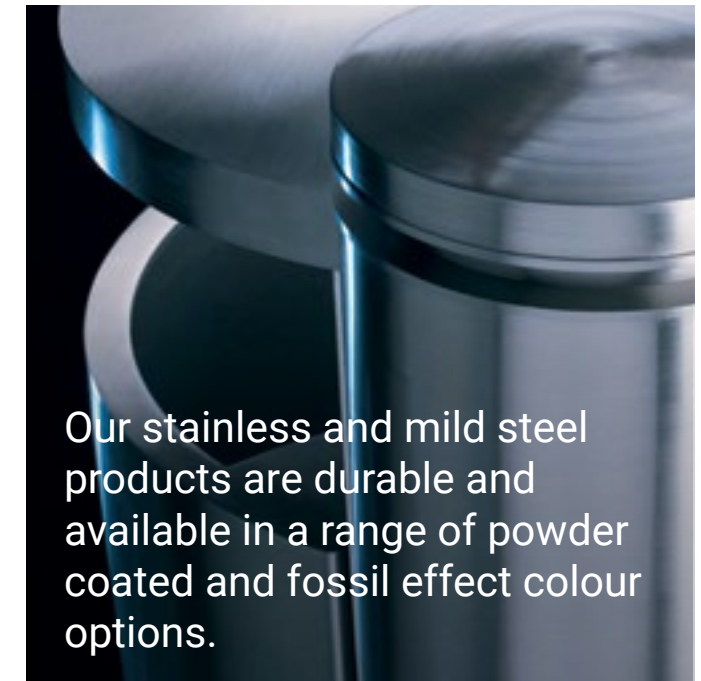
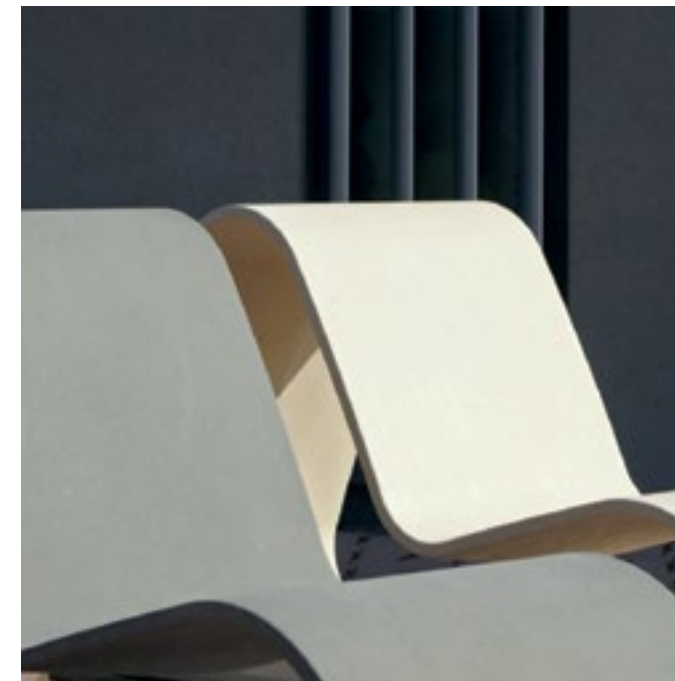


# Material selection

**Our bespoke products can be created in an extensive range of materials including concrete, steel, stainless steel, natural stone, Ferrocas<sup>®</sup>, aluminium, cast iron, timber and even recycled plastics.**

We have a wealth of experience in materiality and can provide the advice you need to ensure the most appropriate selection for your project.

Our objective is to provide you with a finished solution which achieves all functional, aesthetic and budgetary requirements.







Give a sense of **personalisation** and bring narrative to life with the inclusion of calligraphy, logos and graphics.



Add **branded customisation** to your products

# Personalising your designs

With the capability of advanced production techniques, we can incorporate personalised decorative surface detailing into our furniture products to give added dimension and bring even the most complex visions to life.



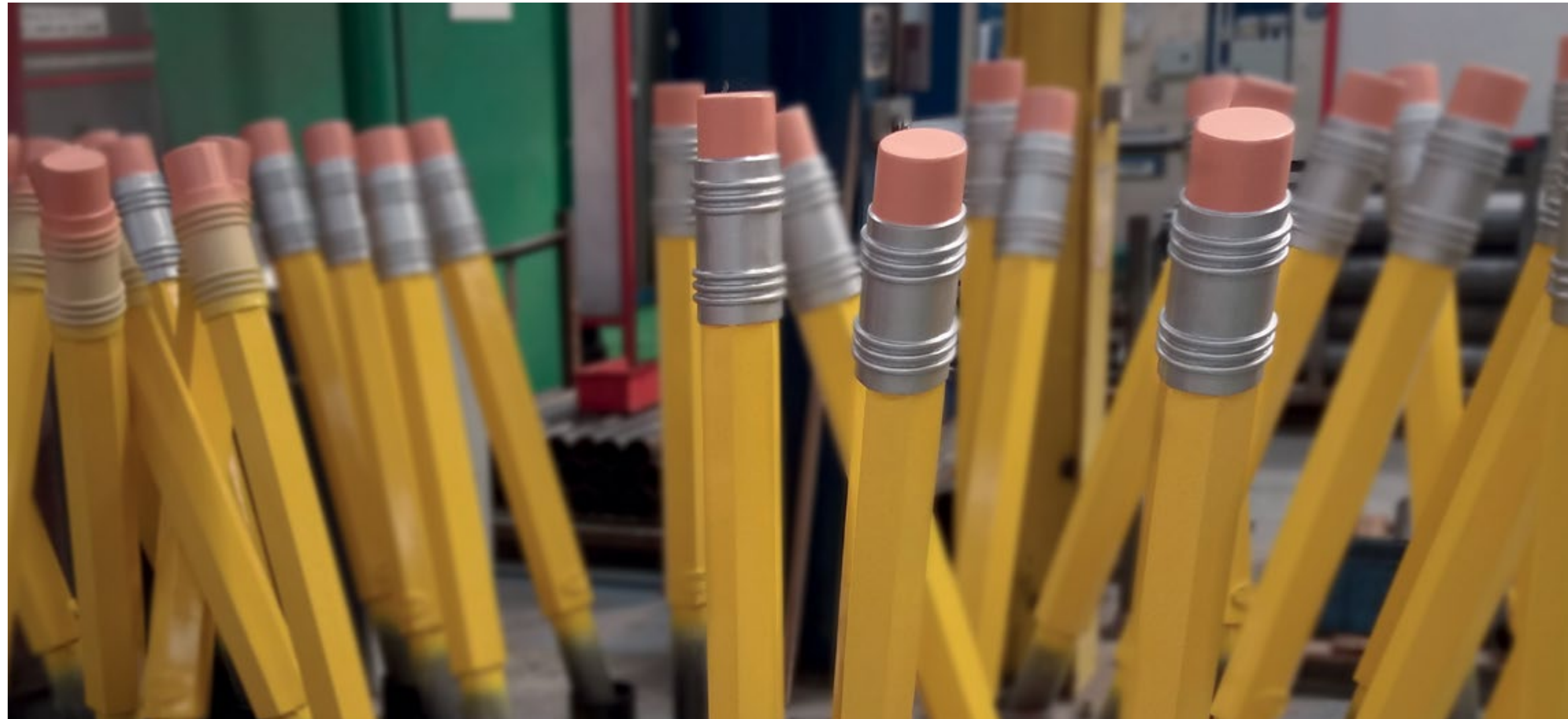


# Product testing & prototyping

Once detailed product specification drawings have been approved and designs agreed, 3D renders or prototypes can be created for extra piece of mind prior to manufacture.

Our protective RhinoGuard® cores have been subject to full scale impact tests, carried out to the latest industry standards to ensure their capability.

We're motivated by our own high standards to deliver market leading quality, constantly striving to meet the needs and expectations of our customers and stakeholders.







# Production & Project Management

**To ensure that projects run smoothly and on time, we follow a structured and dedicated plan tailored around the project's individual requirements.**

Our clients are allocated a specialist Project Manager - this gives them a single point of contact from initial project scoping to handover.

The dedicated Project Manager will create a provisional programme of works which considers site conditions, site programme, contractual implications and health and safety requirements.

Delivery to site can be managed by our logistics department and a full installation service can be provided, should this be required. Our effective logistical procedures ensure efficiency and cost reduction.



# Installation

**Our fully managed installation offer gives our customers the ultimate cradle to grave service and ensures that projects are not only delivered on time but also installed to the highest standard.**

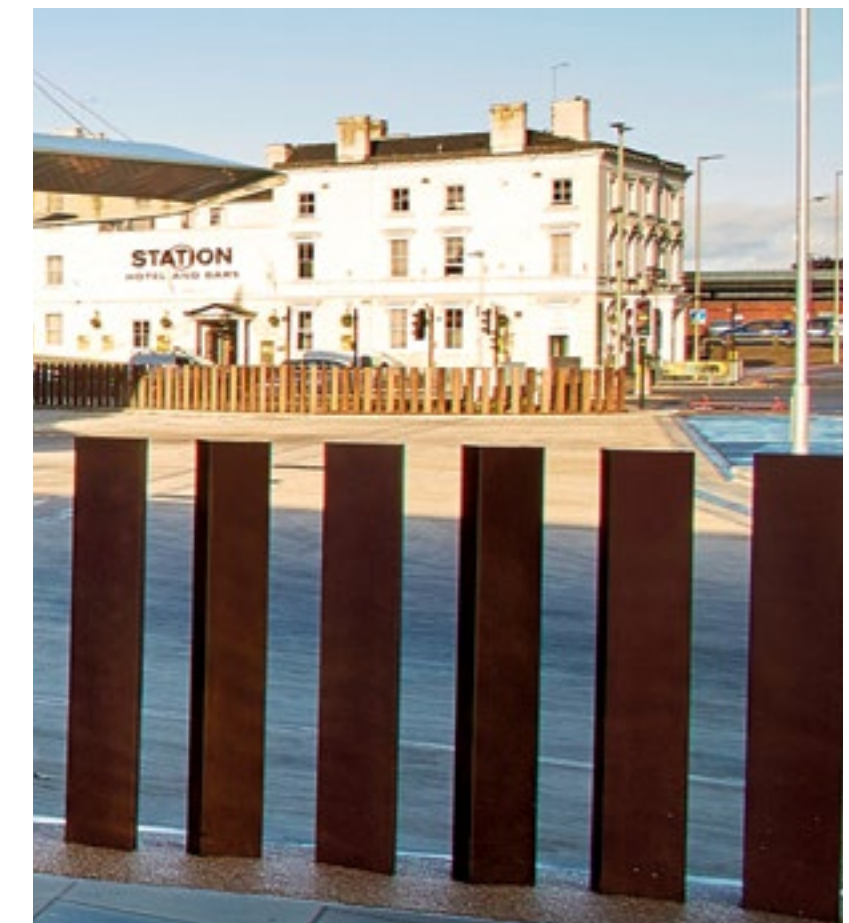
Our installers have been involved in a wide range of projects and have developed a thorough understanding of how to install our products to an outstanding level. We have a number of established sub-contract installation partnerships, all of which have been through a thorough auditing process giving them an Accredited Marshalls Installer status.

Before, during and after install we carry out regular site audits to ensure that we are continuously learning how to improve our offer and products, all whilst working in line with health and safety guidelines.

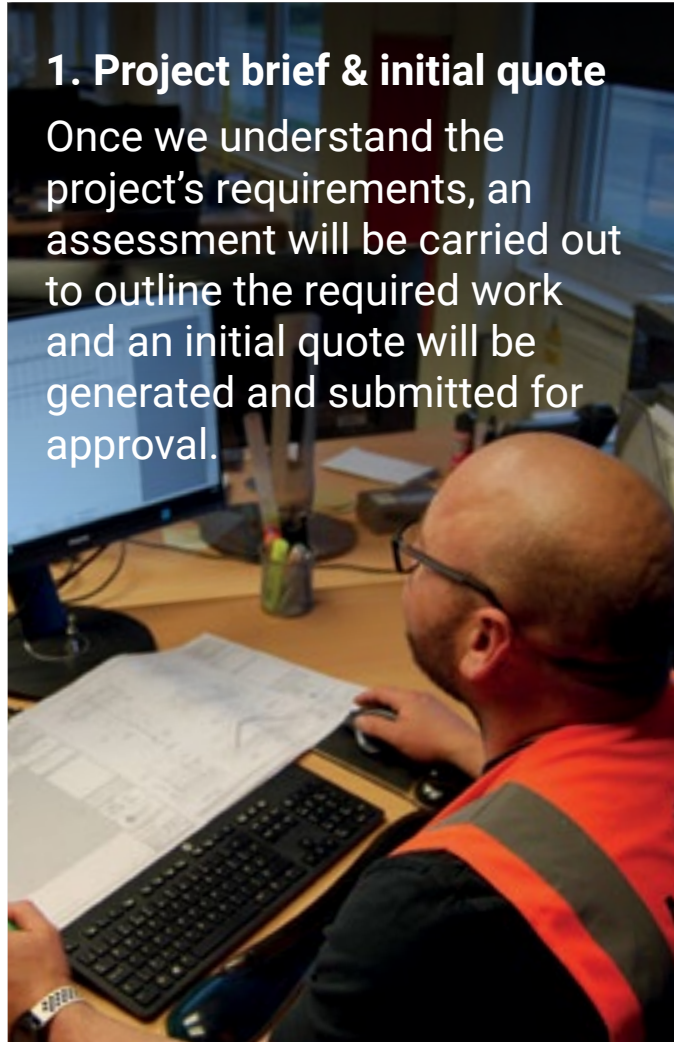
We are here to react to the needs of our customers in an ever changing construction environment. We recognise that the quality of installation plays a vital part in the quality and longevity of our products and our product knowledge and experience means that we are not only the supplier of choice but the installer of choice.



**Gloucester Bus Station:**  
Bespoke feature panels  
manufactured and installed  
by Marshalls Landscape  
Protection

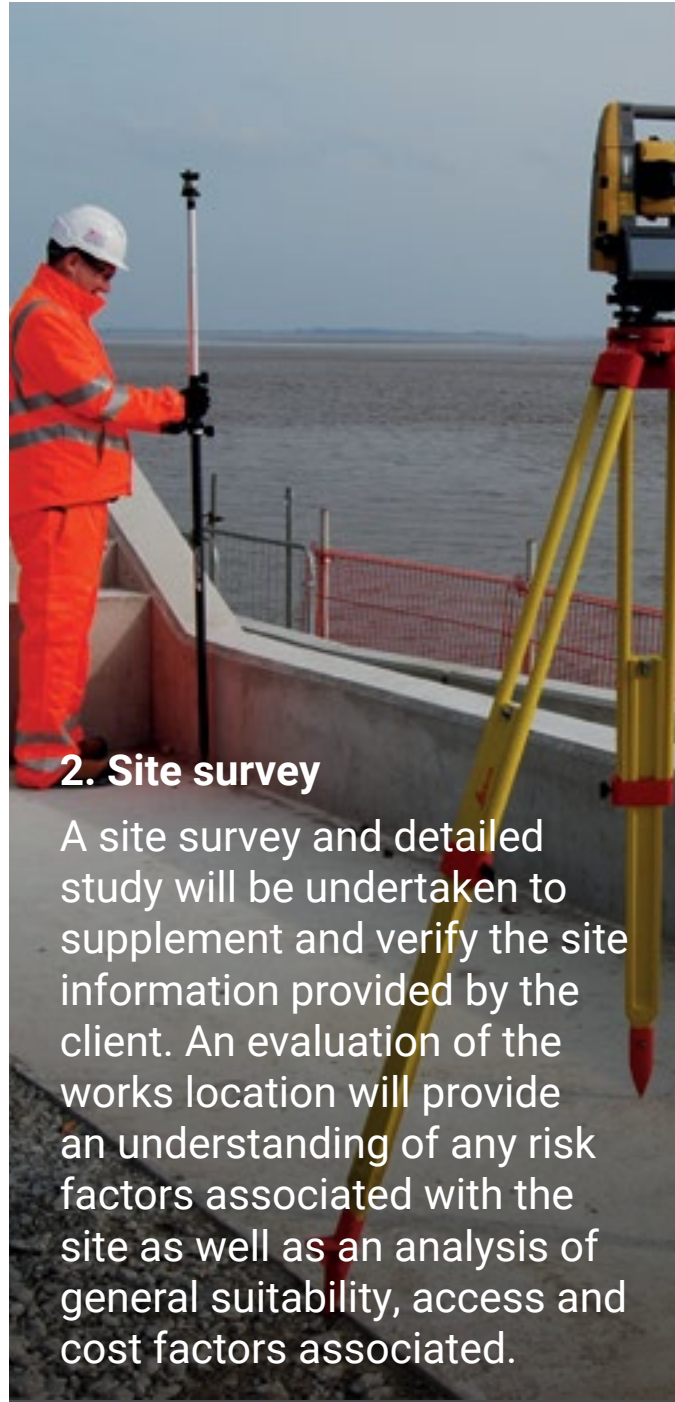




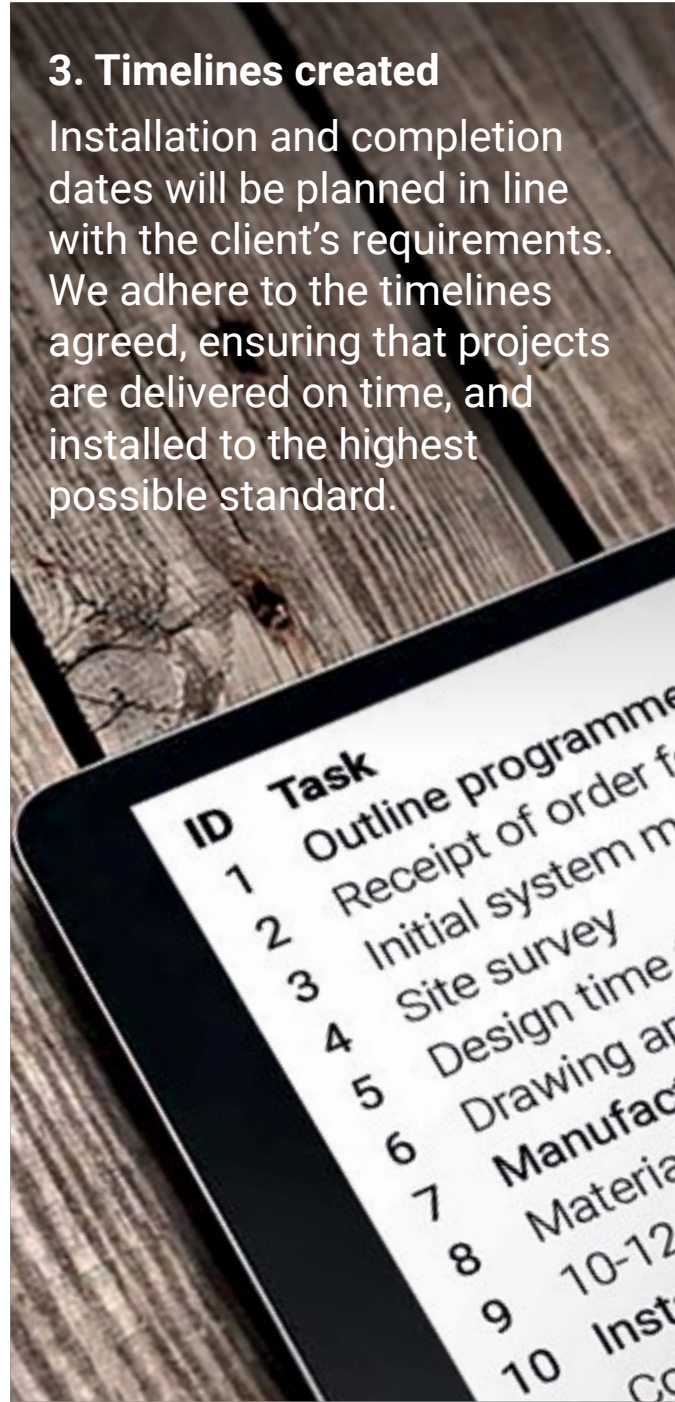


Installation of **St Andrews Quay Retail Park, Hull**

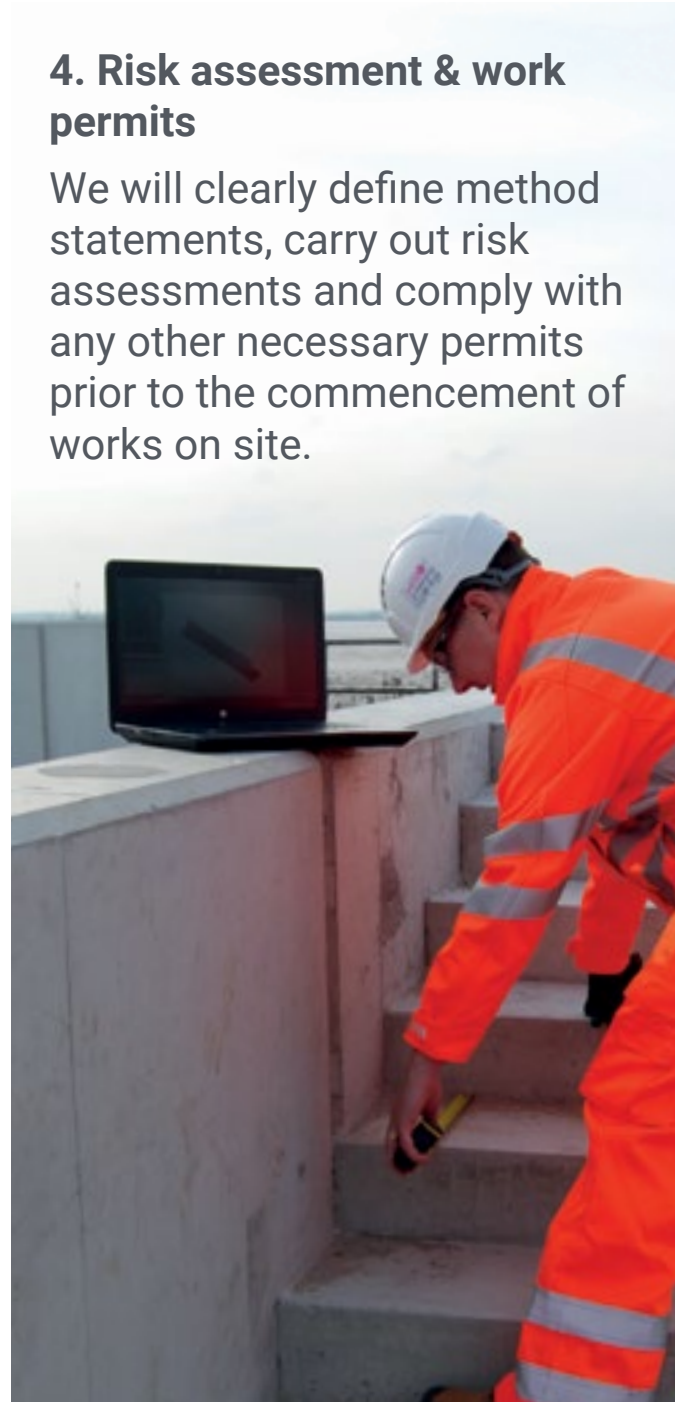
**1. Project brief & initial quote**  
Once we understand the project's requirements, an assessment will be carried out to outline the required work and an initial quote will be generated and submitted for approval.



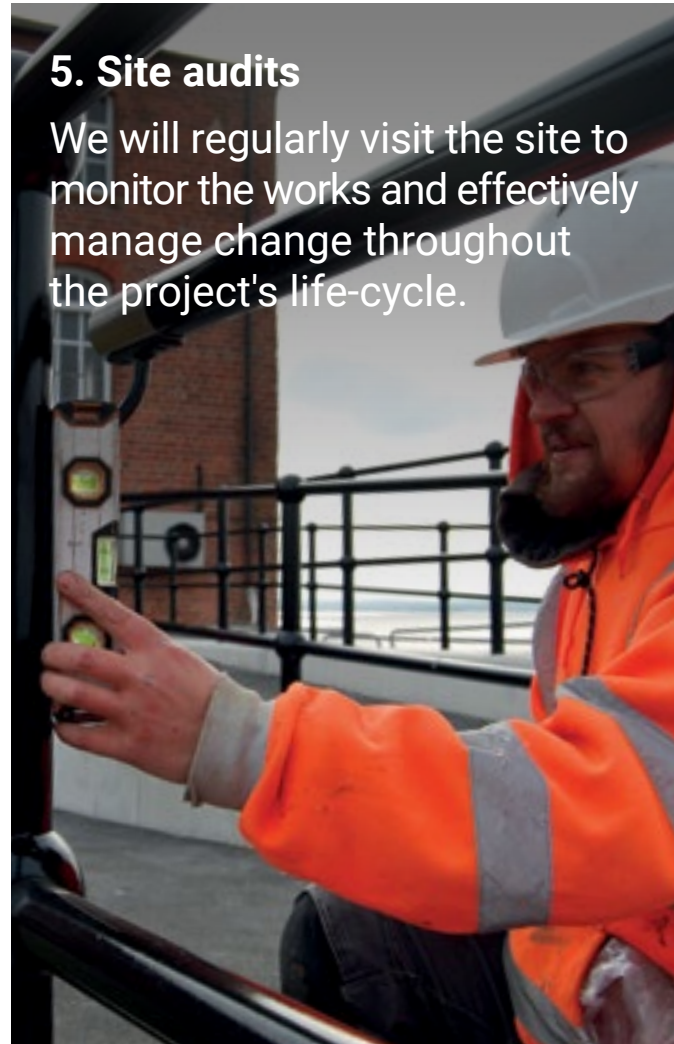
**2. Site survey**  
A site survey and detailed study will be undertaken to supplement and verify the site information provided by the client. An evaluation of the works location will provide an understanding of any risk factors associated with the site as well as an analysis of general suitability, access and cost factors associated.



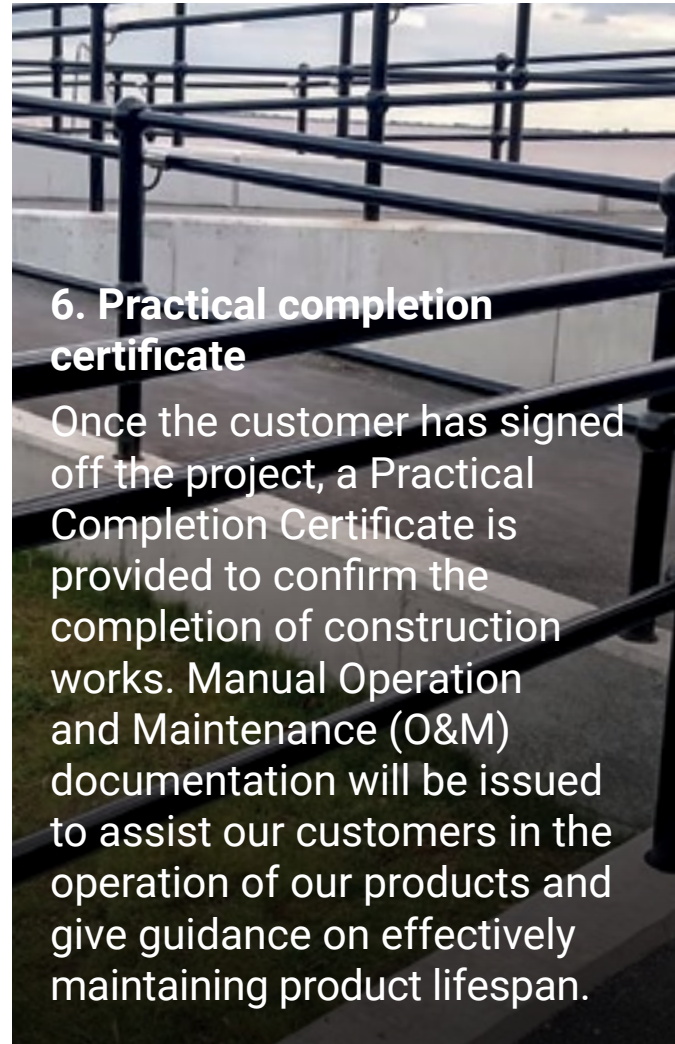
**3. Timelines created**  
Installation and completion dates will be planned in line with the client's requirements. We adhere to the timelines agreed, ensuring that projects are delivered on time, and installed to the highest possible standard.



**4. Risk assessment & work permits**  
We will clearly define method statements, carry out risk assessments and comply with any other necessary permits prior to the commencement of works on site.



**5. Site audits**  
We will regularly visit the site to monitor the works and effectively manage change throughout the project's life-cycle.



**6. Practical completion certificate**  
Once the customer has signed off the project, a Practical Completion Certificate is provided to confirm the completion of construction works. Manual Operation and Maintenance (O&M) documentation will be issued to assist our customers in the operation of our products and give guidance on effectively maintaining product lifespan.





# Landscape Protection

**Our protective RhinoGuard® products negate the need for bulky obtrusive security whilst enabling those who design our city spaces to think more creatively about how they can include Hostile Vehicle Mitigation within landscape design features.**

Our specialist design and engineering team have the capability of building our crash tested cores within street furniture products, tailoring them to the requirements of any given scheme whilst ensuring that they blend in with the environment, keeping people safe...not scared®.

Secured By Design and tested in accordance with the relevant IWA 14.1, PAS 68 or PAS 170 standard, the strongest specification has the capability of stopping a 7.5 tonne vehicle travelling at 50mph.



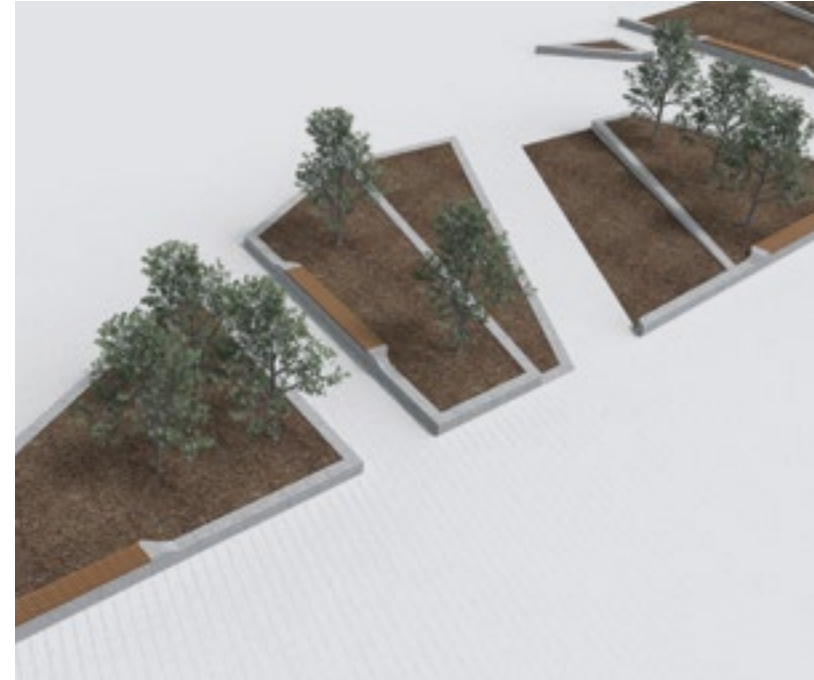
# Raised Granite Planters and Rain Gardens

A rain garden is an area of planting and vegetation that has a perimeter kerb or low raised wall with openings allowing rainwater to permeate into the planting area. This minimises runoff and avoids the need for additional irrigation.

We are able to combine integrated seating sections within the design of our bespoke Rain Gardens to provide an area for people to rest. This can also assist with de-cluttering the public realm.

We also have the ability to incorporate protective RhinoGuard® technology providing protection against hostile vehicles weighing up to 7.5 tonnes, travelling at up to 50mph.

Raised Granite Planters and Rain Gardens are flexible in design and are excellent examples of how Street Furniture and a SuDs strategy can be integrated into streetscapes to create welcoming and attractive features.







# The Perennial Planter System®

Designed and manufactured in the UK, our bespoke Perennial Planter System® provides an excellent way to introduce planting with combined seating into outdoor spaces.

Using a series of connecting panels that can be curved or straight and of varying heights, the bespoke planter solution allows for unlimited design capabilities which can be tailored to complement your scheme's individual requirements.

Characterised by a mild steel or corten retaining structure with the option of FSC®-certified timber seating, functional and attractive combinations can be created to complement the surrounding landscape, providing an area to sit and relax.

With the option of powder coating in any standard RAL or ADAPTA fossil effect finish, your desired look is easily achievable.



# A selection of our bespoke projects

**From standard to bespoke applications, we've worked closely with clients on a range of briefs.**

Starting with just a simple sketch or a finished CAD drawing, we develop elegantly crafted solutions for our clients.

Here are a selection of bespoke projects we are proud to have been a part of.





**Project**  
Wellington Place

**Location**  
Leeds



**Products & materials**  
Paving: Natural Stone  
Bespoke Raised  
Planters and Seating:  
Granite and Iroko timber

**Client**  
MEPC Estate

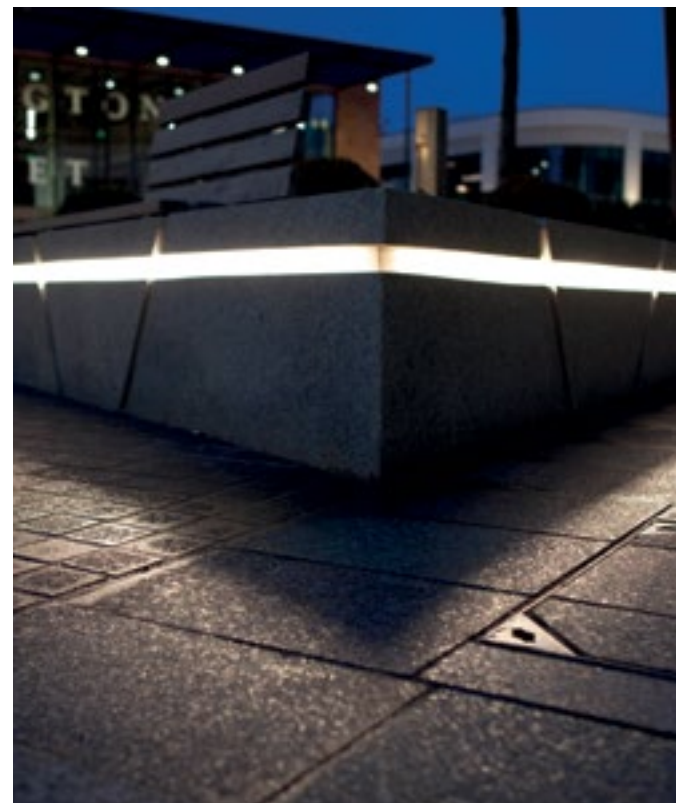
**Contractor**  
Wates Group

**Landscape Architect**  
Gillespies Leeds





**Project**  
Time Square,  
Bridge Street Qtr  
**Location**  
Warrington



**Products & materials**  
Paving: Granite  
Bespoke Raised  
Planters: Granite  
Bespoke Seating: Iroko  
timber  
GEO Bollards, Signage,  
Light Stacks: Stainless  
steel  
Sheffield Cycle Stands:  
Stainless steel  
Bespoke Natural  
Elements Litter Bins:  
Powder coated mild  
steel

**Client**  
Warrington Borough  
Council & Muse  
Developments

**Contractor**  
Vinci Construction

**Landscape Architect**  
Gillespies Leeds





**Project**  
Central Promenade  
& Spanish City

**Location**  
Whitley Bay



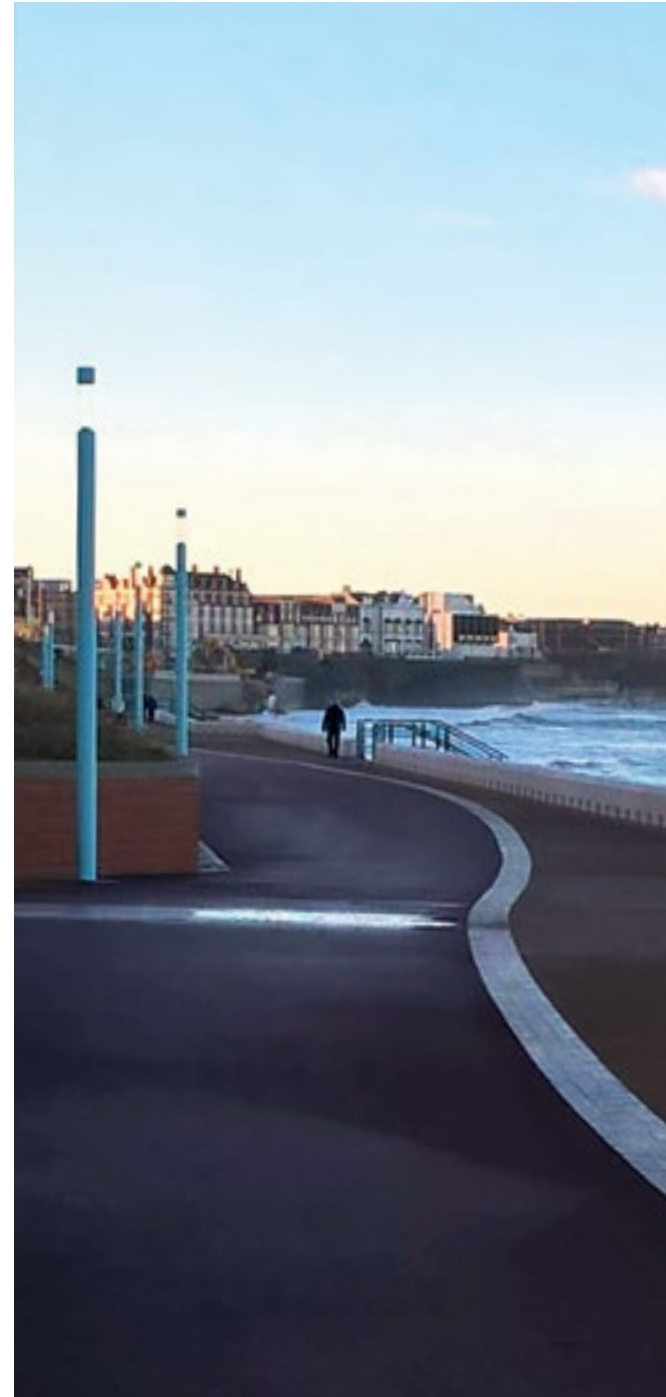
**Products & materials**  
Bespoke Post and Rail:  
Ferrocast®  
Bega Light Stacks: Cast  
aluminium, aluminium  
and stainless steel  
Bespoke Litter Bins:  
Powder-coated  
stainless steel with  
FSC®-certified timber

**Client**  
North Tyneside Council

**Contractor**  
Hall Construction  
Services & Robertson  
CE Ltd

**Engineer**  
Hartlepool Borough  
Council

**Installed by**  
Marshalls Landscape  
Protection





**Project**  
Gloucester  
Transport Hub

**Location**  
Gloucester



**Products & materials**  
Bespoke Feature Screen  
Panel: Galvanised mild  
steel, powder-coated in  
corten

**Client**  
Gloucester Council

**Contractor**  
Kier Construction Ltd

**Landscape Architect**  
BDP





**Project**  
Leicester Square  
**Location**  
London



**Products & materials**  
Bespoke Seating: Iroko  
timber and polished  
bronze  
**Client**  
Westminster City  
Council  
**Designer**  
Burns + Nice





**Project**  
University of  
Birmingham

**Location**  
Birmingham



**Products & materials**  
Bespoke Seating: Iroko  
timber and hawksview  
sandstone

**Client**  
University of Birmingham

**Contractor**  
Morgan Sindall Group plc

**Landscape Architect**  
FIRA

**Installed by**  
Marshalls Landscape  
Protection





**Project**  
Gateshead Quays  
**Location**  
Gateshead



**Products & materials**  
GEO Street Furniture:  
Stainless steel  
Bespoke Balustrade:  
Stainless steel and  
toughened coloured  
glass

**Client**  
Gateshead Council

**Contractor**  
South Bay Civil  
Engineering

**Architect**  
Planit EDC-Altrincham

**Installed by**  
Marshalls Landscape  
Protection





**Project**  
Otley Waterfront  
**Location**  
Otley



**Products & materials**  
Bespoke Post and Rail:  
Ferrocast®  
**Client**  
David Wilson Homes  
**Contractor**  
David Wilson Homes  
**Landscape Architect**  
David Wilson Homes  
**Installed by**  
Marshalls Landscape  
Protection





**Project**  
Maritime Streets  
**Location**  
Barrow-in-Furness,  
Cumbria



**Products & materials**  
Bespoke Metrolinia  
Seating: Concrete and  
douglas fir timber  
**Client**  
Barrow Borough Council  
**Landscape Architect**  
Farrer Huxley  
Associates





**Project**  
Elephant & Castle  
**Location**  
London



**Products & materials**  
Bespoke Seating:  
Iroko timber and cast  
aluminium

**Client**  
Transport for London

**Contractor**  
Ringway Jacobs &  
Transport for London

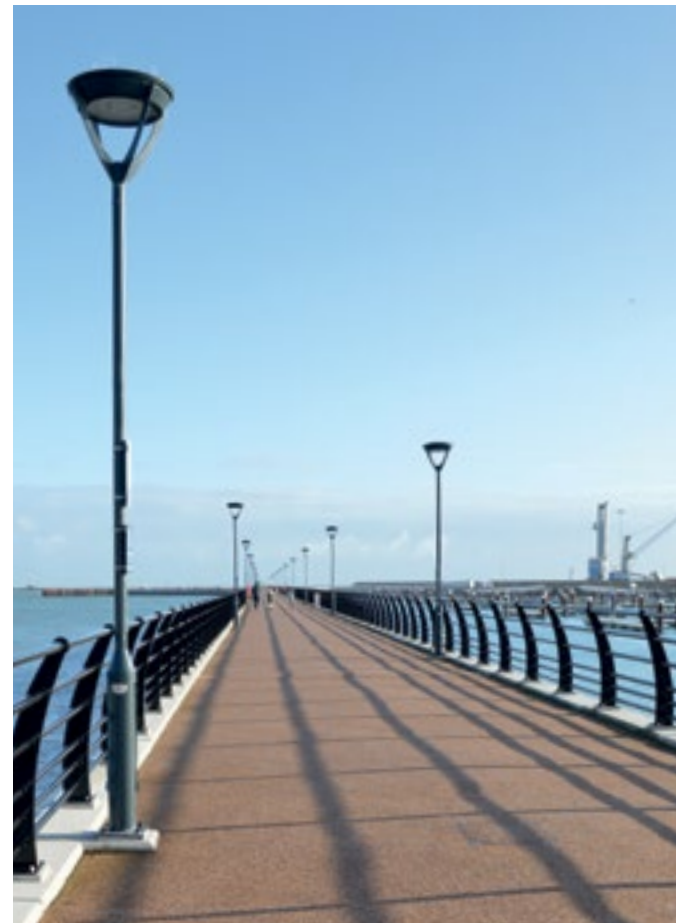
**Architect**  
Witherford Watson Mann

**Engineer**  
Atkins London





**Project**  
Dover Port  
**Location**  
Dover



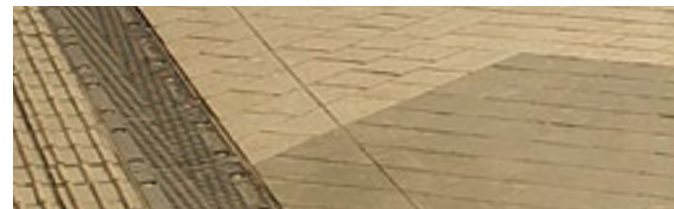
**Products & materials**  
Bespoke Post and Rail:  
Ferrocast®  
**Client**  
Port of Dover  
**Contractor**  
VolkerStevin  
**Designer**  
Port of Dover  
**Installed by**  
Marshalls Landscape  
Protection





**Project**  
Exhibition Road

**Location**  
Royal Borough  
of Kensington &  
Chelsea, London



**Products & materials**  
Paving: Chinese granite  
Drainage: Granite  
topped  
Bespoke Lighting:  
Powder-coated steel  
GEO Benches: Stainless  
steel and Iroko timber

**Client**  
Royal Borough of  
Kensington & Chelsea

**Contractor**  
Balfour Beatty

**Landscape Architect**  
Dixon Jones Ltd

**Engineer**  
Arup





**Project**  
Mamsha  
Alsaadiyat  
**Location**  
Abu Dhabi



**Products & materials**  
RhinoGuard® Igneo  
Seating: Reinforced  
concrete

**Client**  
SPS Mamsha JV

**Contractor**  
Ghantoot

**Architect**  
Dewan

**Installed by**  
Euro-City



**Incorporated with protective RhinoGuard® Technology**





**Project**  
Shakespeare's  
Birth Place

**Location**  
Stratford-on-Avon

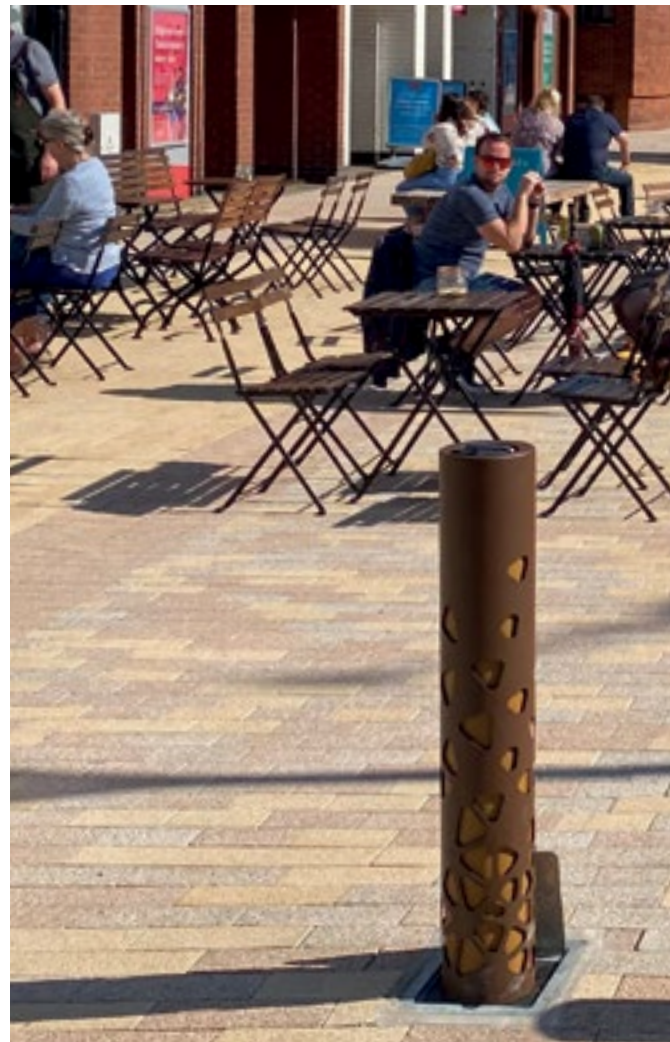


**Products & materials**  
RhinoGuard® Flower  
Burst Slimline Bollards  
(bespoke lift assist  
and shallow mount):  
Bronze powder-coated  
stainless steel

**Client**  
Stratford-on-Avon  
District Council

**Contractor**  
Tandem Projects

**Landscape Architect**  
Design With Nature



**Incorporated with  
protective RhinoGuard®  
Technology**





**Project**  
Windsor Castle  
**Location**  
Windsor



**Incorporated with protective RhinoGuard® Technology**



**Products & materials**  
RhinoGuard® RhinoBlok  
Seating: Concrete and  
Iroko timber  
RhinoGuard® RhinoBlok  
Planters: Concrete  
and powder-coated  
mild steel frame, with  
aluminium infill

**Client**  
Royal Borough of  
Windsor & Maidenhead

**Contractor**  
VolkerHighways





**Project**  
Devonshire Park  
Theatre

**Location**  
Eastbourne, East  
Sussex



**Products & materials**  
RhinoGuard® Bespoke  
EOS: Ferrocast®, timber  
and steel  
RhinoGuard® GEO Cycle  
Stands: Stainless steel

**Client**  
Eastbourne Borough  
Council

**Contractor**  
Vinci Construction

**Sub-contractor**  
Euro-City Group

**Architect**  
Levitt Bernstein

**Installed by**  
Entrance System



**Incorporated with  
protective RhinoGuard®  
Technology**





**Project**  
Cavendish

**Location**  
Sheffield Retail  
Quarter



**Incorporated with  
protective RhinoGuard®  
Technology**



**Products & materials**  
RhinoGuard® Slimline  
Bollards: Stainless steel  
RhinoGuard® Bespoke  
Traffic Columns: Steel

**Client**  
Sheffield City Council

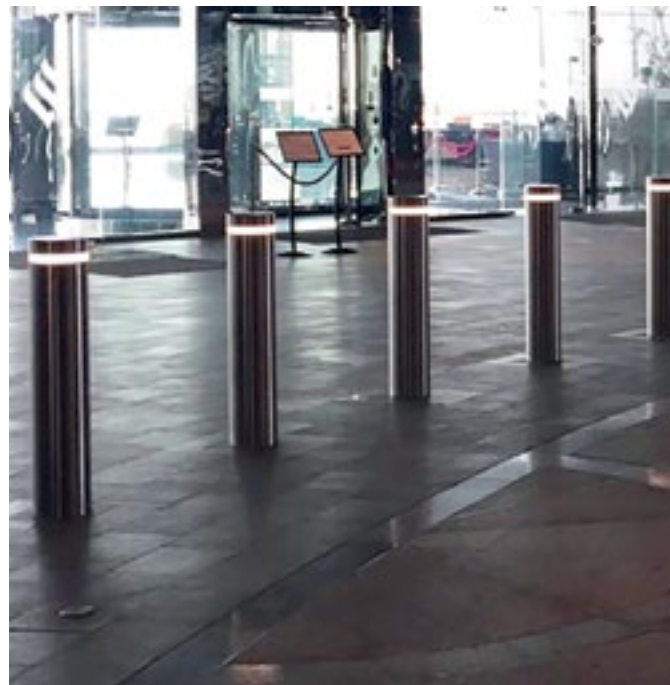
**Contractor**  
BAM Construction

**Designer**  
MFD



**Project**  
Etihad Towers,  
Conrad Hilton Hotel

**Location**  
Abu Dhabi



**Products & materials**  
RhinoGuard® LED  
Bollards: Stainless steel

**Contractor**  
Emirates for Electronic  
Entrance System

**Installed by**  
Euro-City



**Incorporated with protective RhinoGuard® Technology**





**Project**  
Elizabeth Line

**Location**  
Woolwich Station,  
London



**Products & materials**  
RhinoGuard® Rectangle  
Planter: Concrete  
RhinoGuard® Bollards  
with bespoke groove:  
Stainless steel  
Cycle Stands: Stainless  
steel

**Client**  
Crossrail Ltd

**Contractor**  
Balfour Beatty

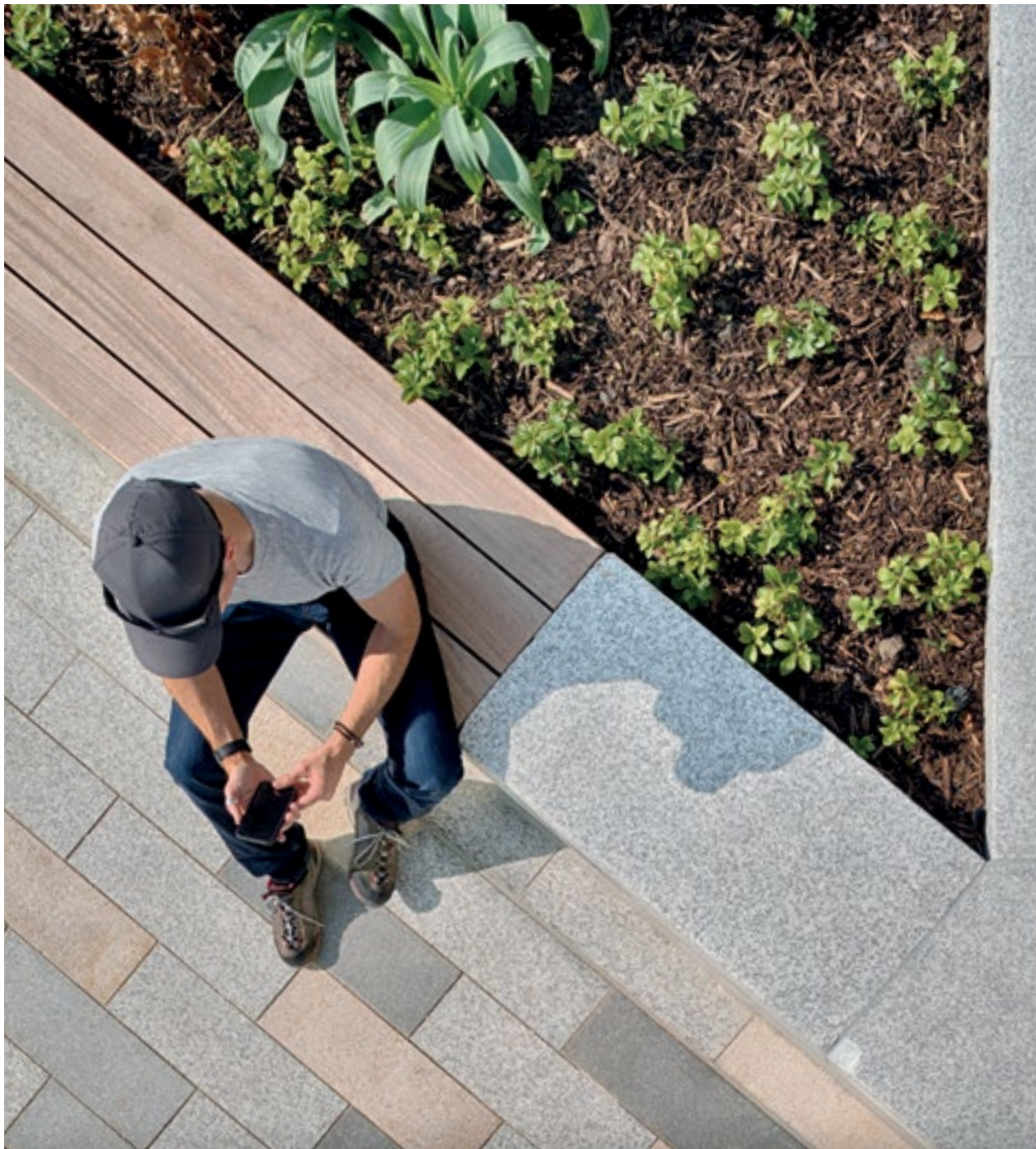
**Installed by**  
Balfour Beatty



**Incorporated with protective RhinoGuard® Technology**







# Marshall's

Landscape Protection

Registered Office:  
Marshall's plc,  
Landscape House, Premier Way,  
Lowfields Business Park,  
Elland, HX5 9HT  
United Kingdom

UK: 0370 600 2425  
International: +44 (0) 1422 312 993  
USA: +1 603 465 1254

[marshall's.co.uk/landscapeprotection](http://marshall's.co.uk/landscapeprotection)

