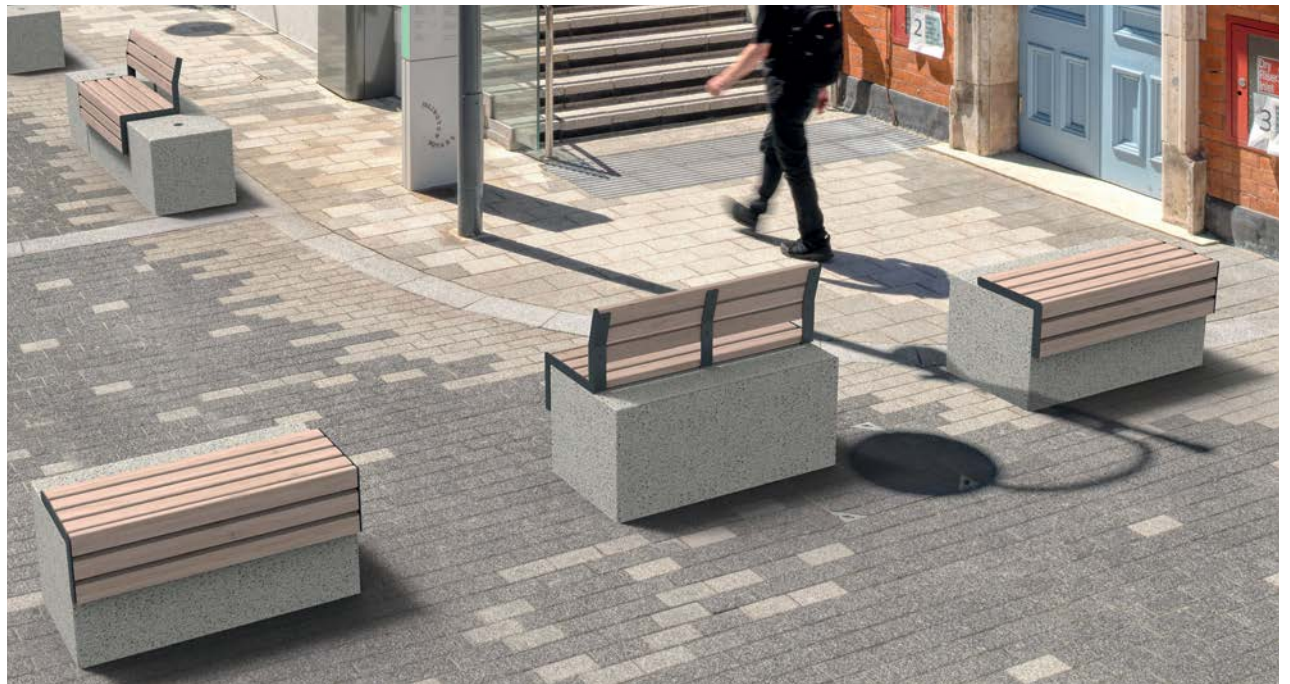




Marshall's
Landscape Protection

Verso

Protective and non-protective
seating solutions





Contents

- 04 Introduction to Verso
- 06 Key features and benefits
- 08 Overview of materials
- 10 Design opportunities
- 12 Product selector
- 14 Design specification - standard modules
- 17 Design specification - block additions
- 18 Our approach to sustainability



This symbol signifies that this range is available with protective and non-protective options.

Verso

For a safer outdoors

Verso is a fully crash tested street furniture range that allows for a mix of protective and non-protective seating and planter elements to be used in unison across a single project.

Combining clean lines and an unobtrusive low height profile, the versatile shape and design allows for unlimited configurations to suit any specification. Each module can also be used as a standalone piece and offers a discreet alternative to a standard row of bollards.

Successfully crash tested to IWA14-1 using a 1.5 tonne M1 vehicle and a 7.2 tonne N2A vehicle, both travelling at 30mph*, the RhinoGuard® Verso range promises to help keep people safe, not scared.

Security specifications



1.5-7.2
TONNES
IWA 14.1



V/7200(N2A)/48/90:3.7
V/1500(M1)/48/90: 5.4



*600 x 1200 Straight & 600 x 1800 Curved only



Key features and benefits

With so many different shapes, options and plank materials to choose from, with Verso, those overseeing the specification process can ensure that they're getting the most from their designs whilst creating spaces that don't feel oppressively defended.

The modularity of Verso seating means that planters can be incorporated into the design to create large or small retaining planter walls.



- 01 Low height means it is visually unobtrusive and allows spaces to be enjoyed
- 02 Attractive alternative to a row of bollards that can make public spaces look fortified
- 03 Successfully crash tested to IWA14-1 using a 1.5 tonne M1 vehicle, and a 7.2 tonne N2A vehicle travelling at 30mph
- 04 Protective and non-protective versions can be used in unison on a project, saving on cost. Once installed, differing unit types are indistinguishable
- 05 Made in Britain
- 06 Manufactured with precast concrete which is low maintenance, and can be enjoyed for years to come with minimal wear and tear
- 07 Optional seating and planter additions are available in FSC®-certified timber or recycled Wood Plastic Composite

Overview of materials

Combined with the versatility of the modular system itself, Verso offers an unlimited array of configurations and aesthetic choices.

Manufactured in Britain using precast concrete, Verso is available in three timeless colour options to complement any urban design.

Optional seating additions, such as bench tops, seat tops and arm rests are available to coordinate with the range and come in a choice of FSC®-certified timber or recycled Wood Plastic Composite.

Base materials

Precast Concrete

Available in three colourways to suit the given scheme, the longevity of concrete reduces maintenance costs and lowers carbon footprint over its life cycle.

Plank options

FSC®-certified Timber

Optional seat tops, bench tops and planters are available with Verso in FSC®-certified Red Grandis timber.

Wood Plastic Composite

As an alternative to timber, the Verso seating and planter additions can also be offered in Wood Plastic Composite.

Available in five colour options, this material choice is highly resistant to rot and decay and is made from 95% recycled and sustainably sourced raw materials that are 100% recyclable.

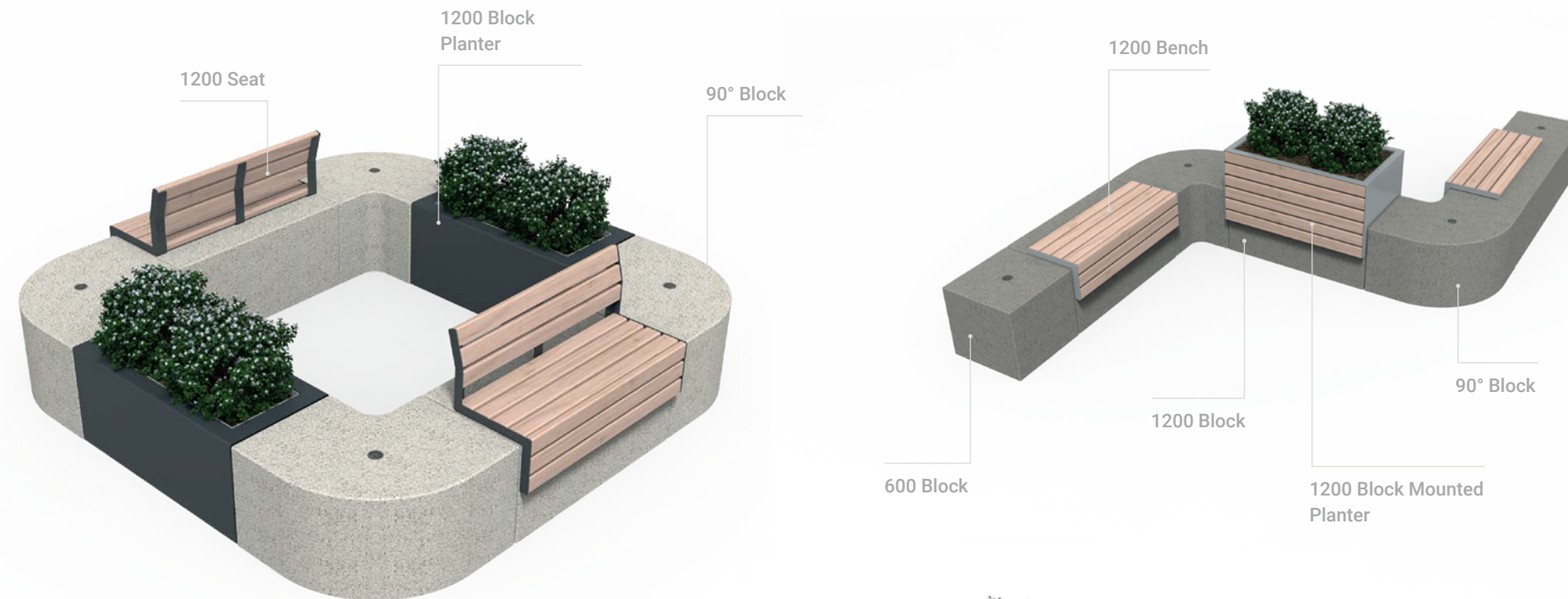
Powder coating

Add further personalisation to your scheme by powder coating metal elements in a range of colourways.



Design opportunities

Developed to help specifiers seamlessly blend varying levels of protection throughout a space, Verso helps to create secure and attractive schemes and avoids unnecessary fortification.



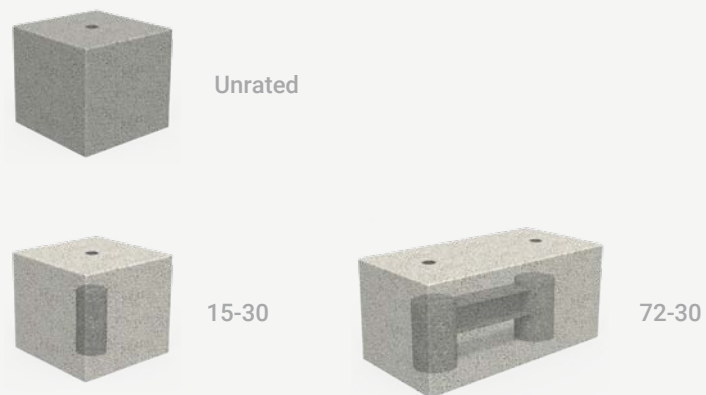
Endless designs can be created with Verso that can include protective and non-protective elements in unison.



Product selector



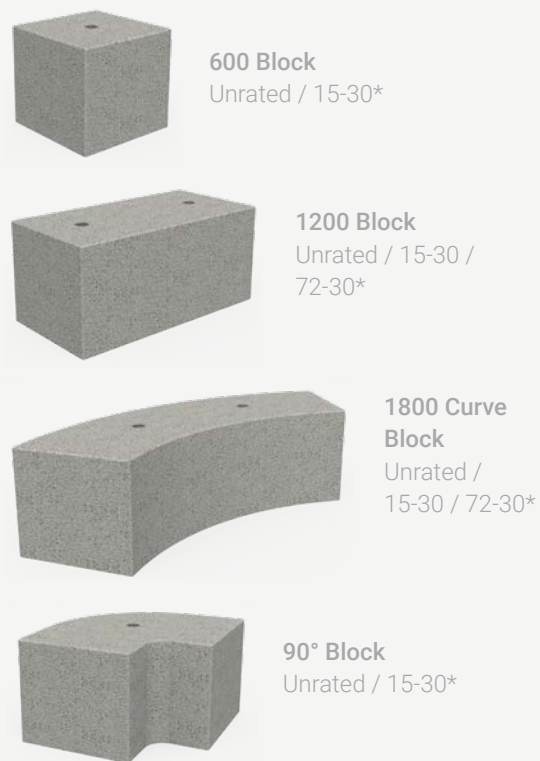
01 Choose your protective rating



02 Choose a concrete colour



03 Choose modules



**15/30 - capable of withstanding a 1.5 tonne vehicle travelling at 30mph. 72/30 - capable of withstanding a 7.2 tonne vehicle travelling at 30mph*

04 Choose optional seating additions*....or planter options

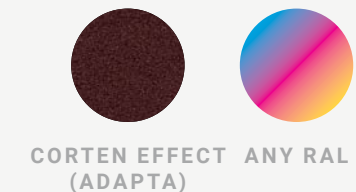


**Seating additions and arm rests only available on the 1200 block*

05 Choose plank materials



06 Choose metal frame powdercoat options



Design specification - standard modules



90° Block
Concrete

| | | |
|-------------------------------|---------------------|-------------|
| Rating option availability | Unrated | 15/30 |
| Block weight excl. cores (kg) | 517.5 | |
| Dimensions (LxWxH - mm) | 900x900x600 | |
| Height above ground (mm) | 550 | |
| Foundations (LxWxH - mm) | 900x900x50 | 900x900x300 |
| Fixing method | Sub-surface mounted | |



600 Block
Concrete

| | | |
|-------------------------------|---------------------|-------------|
| Rating option availability | Unrated | 15/30 |
| Block weight excl. cores (kg) | 500 | |
| Dimensions (LxWxH - mm) | 600x600x600 | |
| Height above ground (mm) | 550 | |
| Foundations (LxWxH - mm) | 600x600x50 | 600x600x300 |
| Fixing method | Sub-surface mounted | |



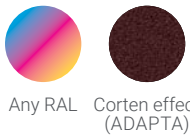
1200 Block
Concrete

| | | | |
|-------------------------------|---------------------|--------------|---------------|
| Rating option availability | Unrated | 15/30 | 72/30 |
| Block weight excl. cores (kg) | 1000 | | |
| Dimensions (LxWxH - mm) | 1200x600x600 | | |
| Height above ground (mm) | 550 | | |
| Foundations (LxWxH - mm) | 1200x600x50 | 1200x600x300 | 1800x1400x300 |
| Fixing method | Sub-surface mounted | | |



1800 Curve Block
Concrete

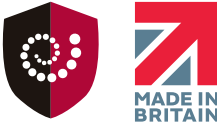
| | | | |
|-------------------------------|------------------------------|--------------|---------------|
| Rating option availability | Unrated | 15/30 | 72/30 |
| Block weight excl. cores (kg) | 1591 | | |
| Dimensions (LxWxH - mm) | 2093x797x600 (max dimension) | | |
| Height above ground (mm) | 550 | | |
| Foundations (LxWxH - mm) | 2093x797x50 | 2093x797x300 | 2093x1800x300 |
| Fixing method | Sub-surface mounted | | |



1200 Block Planter
Mild steel and powder coated in any standard RAL or Corten effect

| | |
|-------------------------------|---------------------|
| Rating option availability | Unrated |
| Block weight excl. cores (kg) | 106 |
| Dimensions (LxWxH - mm) | 1200x600x600 |
| Height above ground (mm) | 550 |
| Foundations (LxWxH - mm) | N/A |
| Fixing method | Sub-surface mounted |

Design specification - block additions



Arm options (seating only)



Plank material options

FSC®-certified



Red Grandis

Wood Plastic Composite



Powder coat options



1200 Block additions
FSC®-certified Red Grandis or Wood Plastic Composite

| | | 1200 Bench top | 1200 Double Bench top | 1200 Seat top | 1200 Block-mounted Planter |
|---|-------------------------|----------------|-----------------------|---------------|----------------------------|
| Weight (timber/WPC addition only - kg) | | 30 | 50 | 40 | 185 (140lt capacity) |
| Timber/WPC addition dimensions (LxWxH - mm) | | 1200x440x292 | 1200x694x292 | 1200x499x664 | 1200x693x606 |
| Heights (mm) | Seat (above ground) | 967 | | | N/A |
| | Armrest (above seat) | 180 | | | N/A |
| | Backrest (above ground) | N/A | | 967 | N/A |
| | Planter (above ground) | N/A | | | 909 |

Our approach to sustainability

We help to build safe, sustainable and beautiful spaces for everyone.

Our approach to sustainability is underpinned by our belief in doing the hard work in areas that are material to our business and our stakeholders, by working with leading organisations and by getting external validation.



ISO50001, which we achieved and maintained since 2015, enables organisations to establish the systems and processes necessary to continually improve energy performance

SBTi targets to **reduce Scope 1 and 2 greenhouse gas emissions** 40% per tonne of production by 2030



100% of our employees are paid at, or above, **the Living Wage Foundation level**



All our production plants now use **100% renewable energy**

We are proud to have been **FSC®-certified** since 2017.

All newly developed Marshalls and RhinoGuard® street furniture products that include wood elements, from now on will be **produced using FSC®-certified (FSC-C133609) hardwood and softwood timber** from well managed forests and other controlled sources.

Further detailed reviews are currently underway that will seek to replace any lumber with **FSC®-certified wood** wherever possible

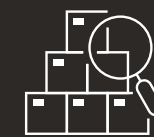


We launched the highly regarded **Power of Logistics** programme to tackle Modern Slavery and led the sector in tackling the issue in the UK

We have eradicated child labour from Tier 1 of our Indian Sandstone supply chain – this is really important to us and our commitment to respecting **human rights** is central to our business



All our Marshalls branded Landscape Protection and Street Furniture products are **made in mainland Britain**



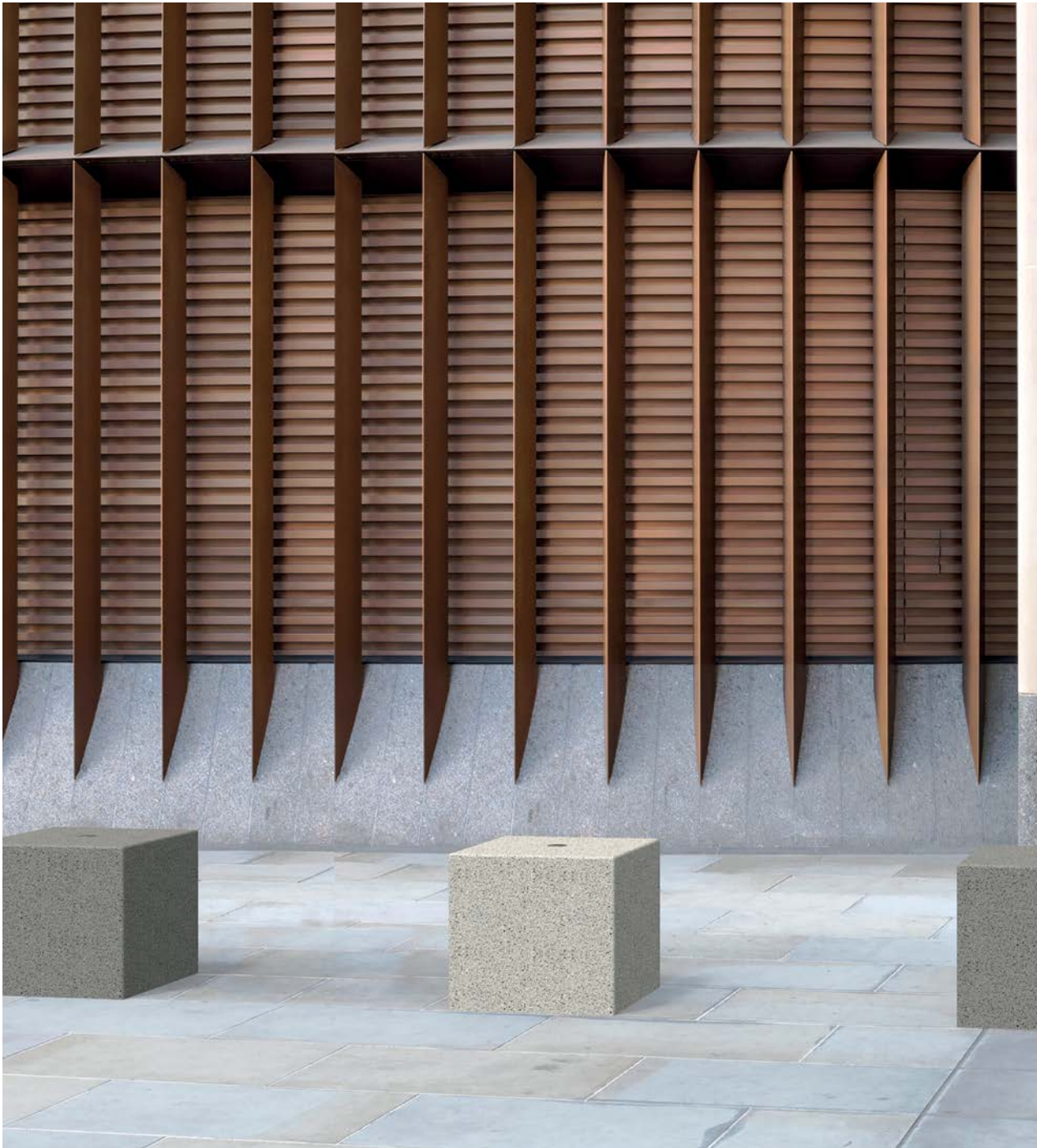
We achieved, and have since maintained, **ISO14001 Environmental Management** since 2000. The intention of **ISO14001** is to achieve a balance between the environment, society and the economy. This international standard provides organisations with a framework to **protect the environment** and respond to changing environmental conditions in balance with socio-economic needs



The concrete and natural stone we use to make our products are **recyclable**

We're proud to pay our fair share of tax – we've kept the **Fair Tax Mark** since 2015





Registered Office:
Marshall's plc,
Landscape House, Premier Way,
Lowfields Business Park,
Elland, HX5 9HT
United Kingdom

UK: 0370 600 2425
International: +44 (0) 1422 312 993
USA: +1 603 465 1254

marshall's.co.uk/landscapeprotection



The mark of
responsible forestry

