

Public Realm

Made primarily in the UK and built on a solid reputation, Marshalls Civils & Drainage design, manufacture and deliver sustainable infrastructure, water management and retaining wall solutions for a safer and better environment, including:

- **Combined kerb and drainage systems**
- **Linear drainage and surface water channel systems**
- **Below ground water management and SuDS solutions**
- **Redi-Rock™ retaining walls**

Delivered to every sector of the construction industry, using modern methods of construction and with long-term, established, partnerships with clients, customers and suppliers, including National Highways, Network Rail, and Environment Agency as well as local, regional and national architects, consultants, contractors, water companies, installers and merchant distributors.

We provide solutions based on sound design and engineering knowledge that offer security and peace of mind.

Public Realm

A place to enjoy and feel secure

Ensuring public areas are safe and attractive, regardless of whether they are local neighbourhoods, major road projects or town or city centres are where we can offer a secure solution that offers peace of mind and sustainability.

Improving an area is not just about making it look pretty, it's also about ensuring its safe from flooding, surface water and anything that may detract from the overall appearance of the area.



Quality & Accreditation

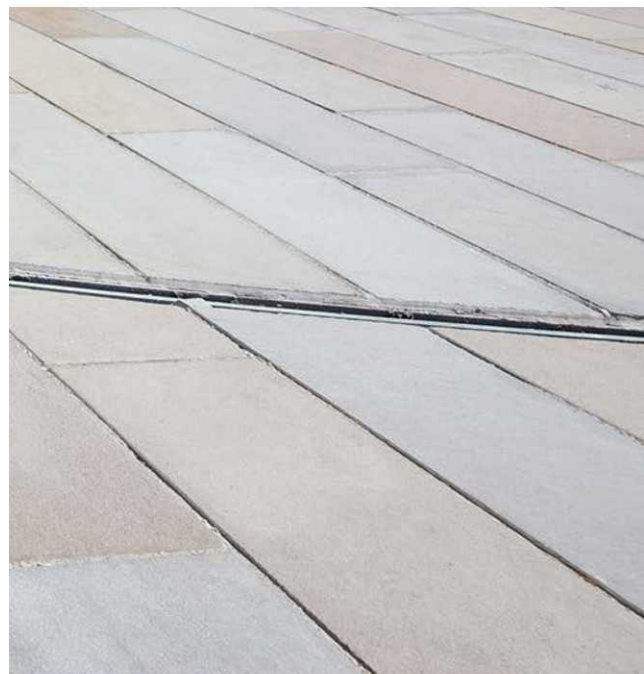


Civils & Drainage Public Realm



Contents

- 04 Birco 100
- 05 Birco 150
- 06 Drexus 100
- 07 Pave Drain – Natural Stone
- 08 Drexus Pave Drain
- 09 Drexus Slot Drain
- 10 Mini Beany
- 12 Max-E Channel
- 13 **Marshall's Civils & Drainage**
A name you can trust





Birco 100

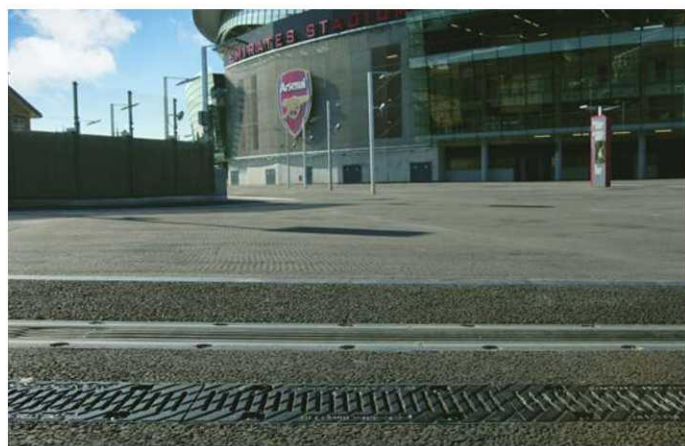
Marshalls Birco 100 is a low-capacity linear drainage system that is suitable for a range of purposes across civic, commercial, rail and industrial projects.

Available in a variety of loading ratings up to F900, Birco 100 is made from high-quality precast concrete, with heavy-grade rolled galvanised steel angles cast into the top of the channel walls to ensure strength in heavy loading applications. This ensures ultimate reliability and durability, whether it's to be deployed in areas of light or heavy traffic.

As well as functionality, Birco 100 offers a pleasing aesthetic, combining a robust concrete channel with a choice of cast iron, stainless steel or galvanised grating in various patterns. Grates are secured by stainless steel bolts that are anchored into threaded steel sockets, and cast into the channel wall, for extra durability.

Birco 100 comes in a range of lengths and depths, with additional accessories allowing any project's drainage needs to be met. It can be used alongside most landscaping surfaces, including paving, and can be used in the design of a SuDS for impermeable surfaces.

- **Available in a range of loadings up to F900**
- **Suitable for light and heavy traffic**
- **Low capacity**
- **Choice of metal gratings**
- **Available with constant depth and inbuilt fall base units**





Birco 150

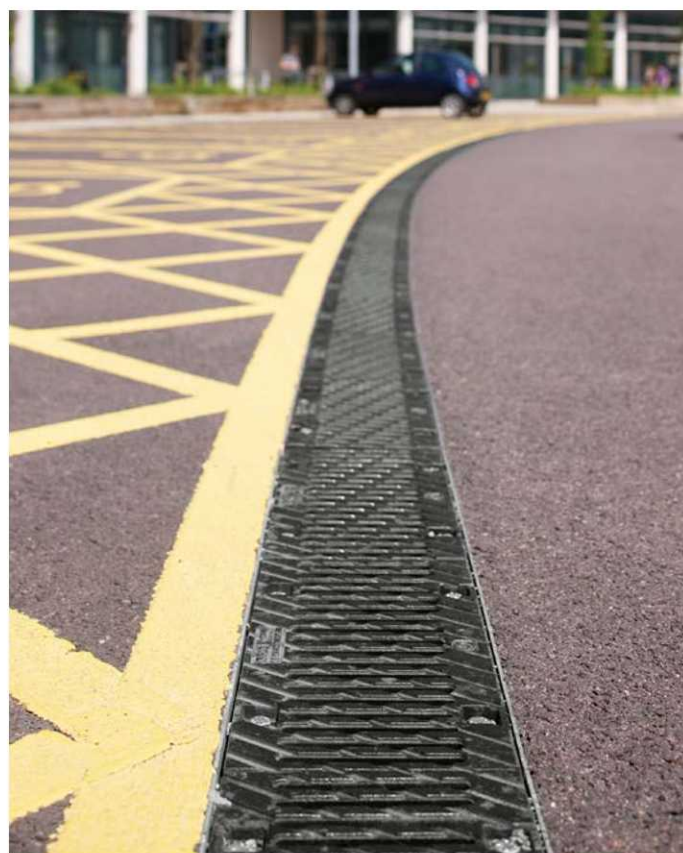
Offering an increased flow capacity over the Birco 100, the Birco 150 combines concrete channels with a diverse range of metal coverings to produce a linear drainage solution that is both effective and aesthetically pleasing.

The Birco 150's water drainage channels are constructed of a robust precast concrete to ensure reliable performance. The channel walls are also reinforced with heavy grade rolled galvanised steel angles cast into the top, increasing durability and ability to handle heavy loads.

With the correct grate application, the Birco 150 can achieve a load classification of F900, the highest possible rating, making it the perfect solution for rail, commercial and industrial projects. The grates are secured by bolting stainless steel bolts into the threaded steel sockets cast into the channel wall.

Birco 150 comes in a range of grate styles to complement any scheme. Choose from a Cast Iron Slotted Grate, Cast Iron Heelsure Grate, Galvanised Steel Mesh, Galvanised Cast Iron Slotted Grate and Cast-Iron Solid Cover.

- **Low to medium capacity**
- **Can withstand loads up to the highest classification**
- **Suitable for commercial, industrial or rail applications**
- **Available in five grate options**
- **Available with constant depth and inbuilt fall base units**





Drexus 100®

Drexus is a low-capacity, cost-effective linear drainage system, suitable for installation within civic, commercial and rail projects where pedestrian or standard traffic application is needed.

The lightest unit in our channel range, the Drexus Channel features 30mm thick scalloped side walls. Despite being lightweight, the system is robust and, when combined with Drexus cast iron grates, provides for load classes of B125 - D400.

Drexus Channels can be specified with 1000mm-long transitions, which improve flow rates and increase the system's overall discharge capacity.

Grating is available in 10 customised options, including cast iron, galvanised and stainless steel.



- Suitable for load classes up to D400
- Lightweight yet robust
- Provides efficient drainage
- 10 grating material options



Drexus® Pave Drain

Natural Stone

Drexus Natural Stone Pave Drain is a low capacity linear drainage system that offers a unique aesthetic for linear drainage, suitable for any prestigious public realm development.

Through our heritage in natural stone we have developed a drainage solution to complement our most popular natural stone paving products.

Drexus Natural Stone Pave Drain is available in a variety of stones including Mid Grey Granite, Silver Grey Granite and Scoutmoor Yorkstone.

Marshall's Civils & Drainage Drexus Natural Stone Pave Drain is designed to provide any Landscape Architect with choice and flexibility for an aesthetically pleasing linear drainage solution.

- **Low capacity linear drainage system**
- **Suitable for load classes up to D400**
- **Available in a variety of stones**
- **Complements most natural stone paving products**





Drexus® Pave Drain

Designed to complement Marshalls' most popular paving products, the robust Drexus Pave Drain is available in a variety of finishes, with choices including Textured Grey, Textured Buff, Textured Charcoal. This means you don't have to compromise the look of your project for effective drainage.

Drexus Pave Drain has a loading rating up to D400 and is suitable for a range of public realm developments, with the exception of public road carriageways or motorways.

This low capacity drainage solution has been designed for flexibility and appearance using Marshalls' expertise in concrete.

- Available in a range of finishes and 6 colourways
- Low capacity drainage
- Suitable across a range of applications including pedestrian and lower traffic areas
- Complements Marshalls' most popular paving ranges





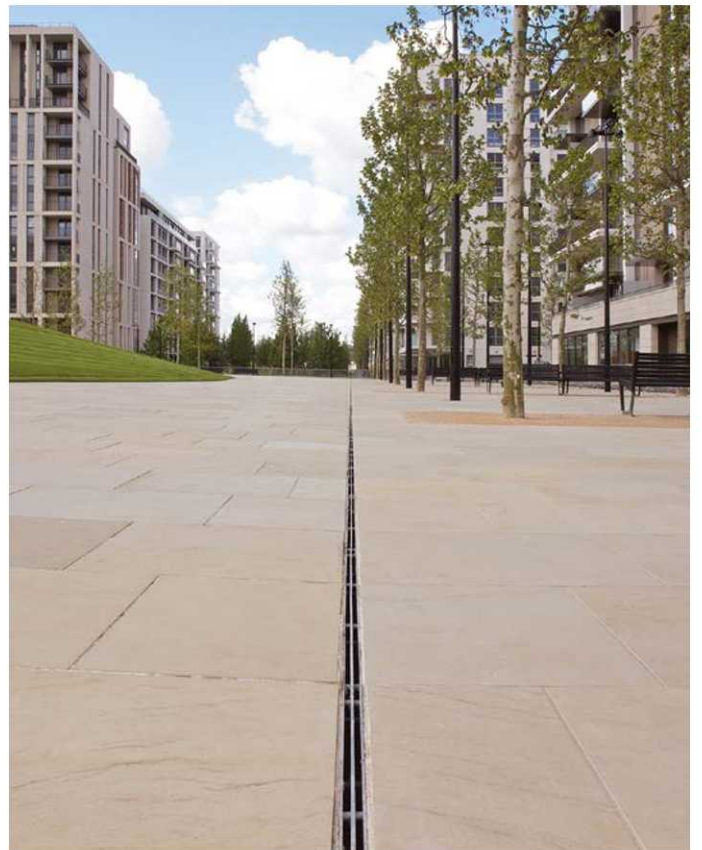
Drexus® Slot Drain

The Marshalls Drexus Slot Drain is the ideal solution for projects requiring an effective drainage solution that doesn't compromise on the aesthetics of the overall landscape.

Particularly suited to natural stone applications, the low-capacity Drexus Slot Drain hides the Drexus channel beneath a galvanised steel slot, featuring slimline mono or duo linear aperture.

Suitable for use across a range of applications and public developments, Marshalls Civils & Drainage can also design and manufacture a bespoke Drexus Drain Slot to meet project requirements including true radius curved apertures and stainless steel finishes.

Marshall Drexus Slot Drainage is available as a mono or duo slot to suit your drainage needs.



- **Suitable across a range of applications**
- **Can integrate into Natural Stone product-based landscapes**
- **Low capacity drainage**
- **Bespoke options available**



Mini Beany[®]

Evolved from the successful Beany range, the Marshalls Civils & Drainage Mini Beany Combined Kerb and Drainage System is a medium capacity water management solution.

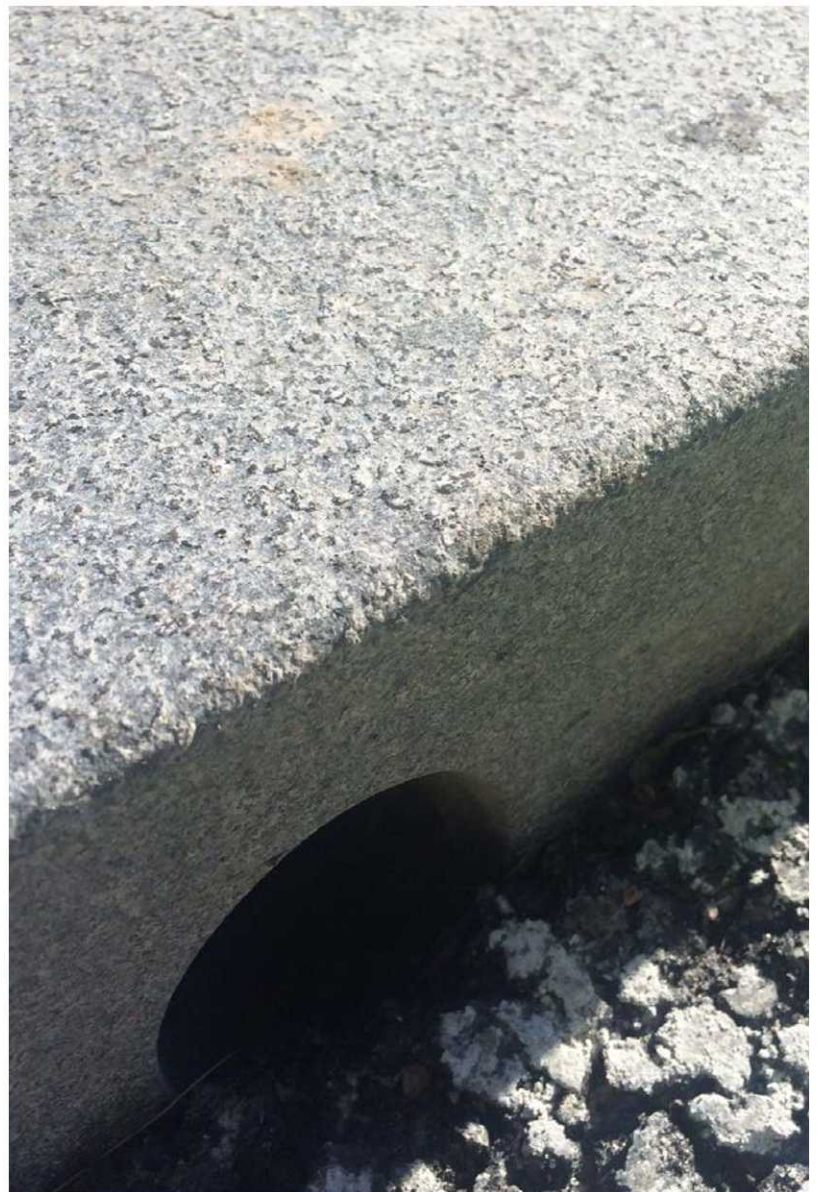
Excellent flow rates alongside a robust concrete construction make the Mini Beany the ideal choice for low to medium capacity road drainage requirements and areas with heavy or abnormally heavy wheel loads.

The two-piece design of the Mini Beany - made up of the Mini Beany top unit and a base channel, reduces the risk of damage during the installation process. It also allows for a choice of top finishes to complement a wide range of aesthetics, from urban to rural.

The Marshalls Mini Beany is available with two colour options, Standard Grey and Conservation Silver Grey as well as in granite for a more bespoke solution.

- **Innovative two-piece design**
- **Available in two colour options to suit your requirements**
- **Low to medium capacity road drainage and kerb drainage solution**
- **Load capacity of E600**
- **Available in Granite**







Max-E Channel

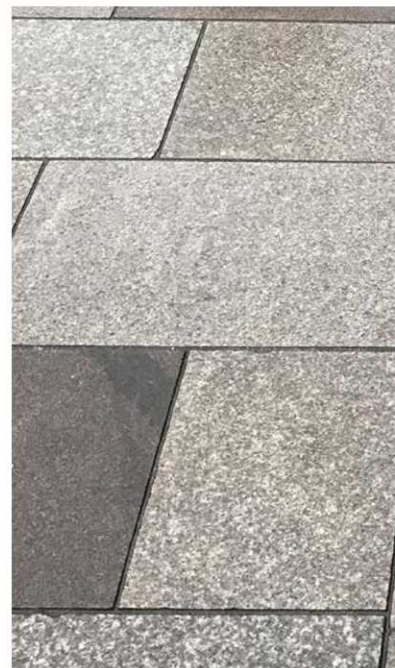
The Marshalls Max-E Channel range is a high capacity linear drainage system that complements the Beany range to ensure continuity between kerb and top units.

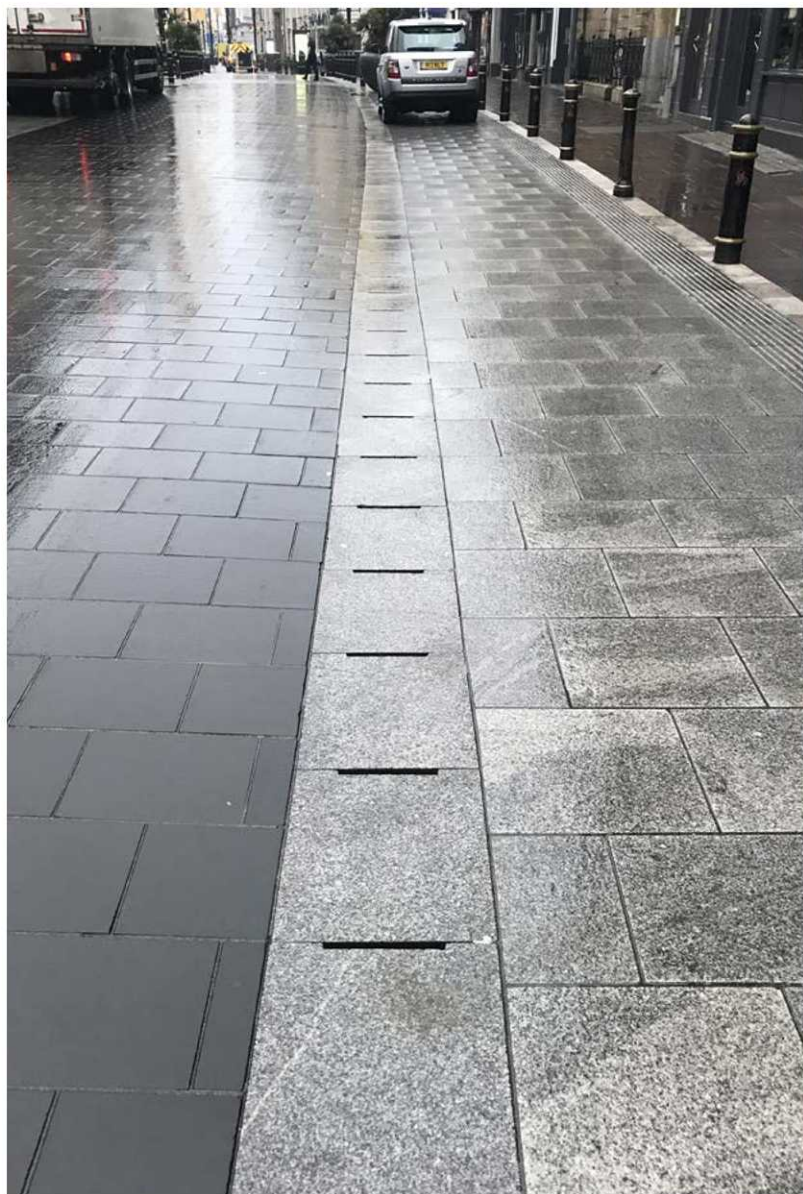
Max-E Channel integrates with the Beany Block top units creating a unique system capable of providing continuous drainage of the carriageway at road and vehicular crossings.

With the appropriate top options, Max-E Channel can achieve a load bearing classification of F900, the highest possible rating, making it a perfect option for rail, commercial and industrial deployment.

For ultimate choice, Max-E Channel is available in a range of top units that will complement any area, regardless of the project. Concrete slotted top units are offered in Conservation Silver Grey, Standard Grey and Reinforced Standard Grey. The blocks can be textured to provide an appealing finish. Alternatively, cast-iron options can be deployed.

- **Compatible with all Beany products**
- **Can achieve a loading classification of F900**
- **Suitable for public realm projects including commercial, industrial or rail applications**
- **Available in concrete slotted top and cast-iron top finishes in various colours to compliment your water management drainage project**
- **Available in Granite**





Marshalls Civils & Drainage

Quality - Marshalls is a benchmark for excellence. As well as exceptional customer service, technical innovation and manufacturing expertise, it continues to be widely regarded as a leader in its field regarding Corporate Responsibility and Sustainable business practices.

Our factories have secured ISO 9001:2015 certification

Sustainability - It's not enough that every product is designed, manufactured and tested to market-leading standards. If we are to truly care about the impact we have on society, we have to make the conscious choice to **always do the right things, for the right reasons, in the right way**. We call this **The Marshalls Way**. We are guided in this by our values of leadership, excellence, trust and being sustainable.

For more information please visit www.marshalls.co.uk/sustainability



Proven Strength - Many concrete solutions manufactured by Marshalls Civils & Drainage have a proven service life of 120 years, it is not weakened by fire or moisture and do not lose their shape.



Durability - Due to the integral strength and durability of the Marshalls Civils & Drainage precast concrete products, they are highly abrasion and don't lose strength over time. Inherently strong and robust our solutions are resistant to the effects of freeze thaw and de-icing salts.



Ease of Design - Systems perform more efficiently with just the use of concrete channels, grates, outfalls giving improved end user performance and greater comfort to pedestrians and road users.



Reduced Maintenance - We offer solutions that are easier and less costly to maintain than other forms of surface water drainage systems, with easy to access.



Design Flexibility - The Marshalls Civils & Drainage precast concrete products can be used for a number of purposes, including sewerage, infrastructure, civils and sustainable drainage systems (SuDS) applications such as stormwater attenuation and storage.



Fire Resistant - Concrete is naturally fire resistant and is an effective barrier to the spread of fire. It does not produce smoke or emit any toxic fumes under fire conditions.



CDM - Marshalls Civils & Drainage is committed that its products are designed and manufactured to ensure the safety of users. Installation of products involves breaking ground and is thus considered as construction work under the Construction (Design and Management) Regulations 2015. Marshalls Civils & Drainage puts a great deal of effort into ensuring that its designs are safe and will provide structural details to the Principal Designer nominated by the Construction Site Client (please contact Marshalls Civils & Drainage Technical Office).



A name you can trust





Marshall's

Civils & Drainage

Marshall's PLC, Landscape House, Premier Way,
Lowfields Business Park, Elland HX5 9HT