

Design & Engineering - **Case study**

Goldman Sachs Offices, 25 Shoe Lane, London

Creating Better Spaces



Marshalls

Client: Goldman Sachs

Sector: Public realm / bespoke features

Challenge

The design of a complex interlocking and overlapping granite retaining wall that includes seven planters, positioned over split levels and surrounded within 3,500m² of public realm. The added restrictions of limited excavation depth within central London posed a considerable challenge to foundation design and buildability.

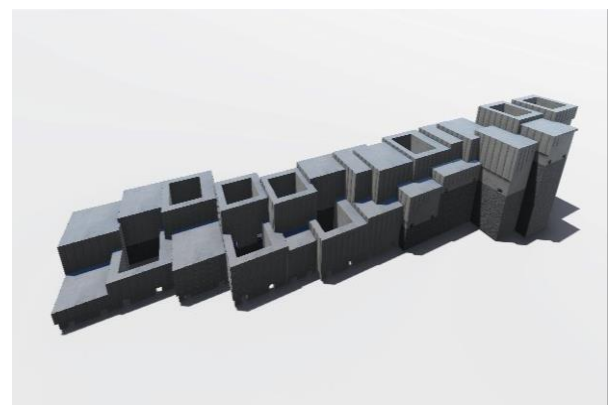
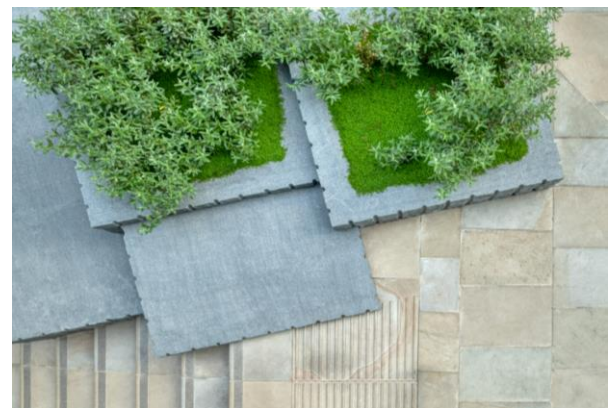
Solution

- Detailed 2D and 3D digital modelling to establish the fit and finish of each bespoke unit
- The production of a one-off 3D printed scale model to understand the completed look of the project and crucially, how each component part would fit together
- A detailed examination of the foundation design to keep within the site restriction of limited excavation depths in the capital
- Individual unit scheduling, logistics, build sequencing and installation guidance to support final construction on site



Outcome

- A highly intricate bespoke feature on the aptly named 'Stonecutter Street' using seemingly random placed granite blocks to create the illusion of an integrated public space
- A blend of precision digital design and modelling with an aesthetic brief to look as though it had come straight from the quarry



"The level of detail from the Marshalls team facilitated us with the design and construction of these bespoke products. 3D modelling, unit scheduling, design parameters, logistics and installation guidance were among the key features provided as part of the overall service that aided us to deliver this world class public space."

Christian O'Keefe, Contract Project Engineer, City of London.

Get in touch

For information on how to involve Marshalls Design Team in your next project contact your local Marshalls Sales Representative or call Marshalls on **0333 331 4799**.

www.marshalls.co.uk/designteam



www.carbonbalancedprint.com
CBP2225

