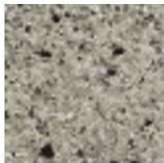


Modal X Charcoal Granite Textured



Modal X Charcoal Granite Smooth



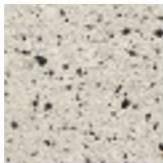
Modal X Silver Grey Granite Textured



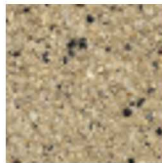
Modal X Silver Grey Granite Smooth



Modal X Light Granite Textured



Modal X Light Granite Smooth



Modal X Oatmeal Granite Textured



Modal X Oatmeal Granite Smooth

Modal X is a premium, contemporary concrete range that offers a mix of different paving formats.

- Three versatile plan sizes
- Four colours and two textures
- Inspired by high quality natural granite
- Higher levels of design flexibility
- Manufactured in Britain using Marshall's concrete technology

| DESCRIPTION | |
|-----------------------------------|---|
| Appearance | Solid unit with textured/smooth surface and integral spacers with Maxi-Mix Technology |
| Manufacturing process | Semi dry pressed & vibrated concrete |
| Base raw material | Concrete |
| Governing manufacturing standards | All data where relevant to be established in accordance with BS EN 1338:2003 (Block) All data where relevant to be established in accordance with BS EN 1339:2003 (Flag) |
| Installation standards | Laid in accordance with BS 7533-3: 2005+ A1:2009 (Block) & BS7533-4:2006 (Flag) |
| UKCA marking/DOP | https://www.marshalls.co.uk/dop |

Date created: 27 10 2023



03704 11 22 33
www.marshalls.co.uk/commercial

T: 01422 312000
F: 01422 312 943
E: grouptechnicalservices@marshalls.co.uk

PHYSICAL PROPERTIES

| | | |
|------------------------------------|---|----------------|
| Dimensions (mm) | Work | Nominal |
| | 399 x 399 x 50 | 400 x 400 x 50 |
| | 449 x 449 x 50 | 450 x 450 x 50 |
| | 599 x 599 x 50 | 600 x 600 x 50 |
| Approx unit weight (kg) | Unit | Weight |
| | 400 x 400 x 50 | 20 |
| | 450 x 450 x 50 | 25 |
| | 600 x 600 x 50 | 45 |
| Tolerances on work dimensions (mm) | Length ±2mm, width ±2mm, thickness ±3mm | |
| Loading classification | We are unable to give specific loading classification as the maximum loading suitability for this product is not applicable on every size and is subject to install method. For further guidance, please contact Technical Advisory Services Department on 0370 411 2233. | |
| Abrasion resistance (mm) | ≤ 23mm (Wide Wheel Abrasion Test) | |
| Durability (freeze/thaw) | ≤ 1.0 kg/m ² as a mean with no individual value ≥ 1.5 kg/m ² | |
| Material density | 2300 kg/m ³ (typically) | |
| Slip/skid resistance (polished) | Mean polished skid resistance value (PSRV): > 45 | |
| Slip/skid resistance (unpolished) | Mean unpolished skid resistance value (USRV): > 45 | |
| Thermal conductivity (K value) | Design data as defined to BS EN 13369 : 2013 | |
| Facing layer | 4mm minimum thickness | |
| Bending strength | Characteristic bending strength of 5.0 MPa with no individual result less than 4.0 MPa | |

SPECIFICATION

| | |
|---------------------------|--|
| Emission of asbestos | No content |
| External fire performance | Deemed to satisfy. See commission decision 2000/553/EU |
| Reaction to fire | Class A1, see commission decision 2000/605/EC |

SUSTAINABILITY

| | |
|-------|---|
| Breem | These units can achieve an "A" rated system when used in conjunction with the correct sub-base components |
|-------|---|

SITE WORKS

| | | |
|----------|----------------|-------------------------|
| Coverage | Unit | Coverage |
| | 400 x 400 x 50 | 6 no per m ² |
| | 450 x 450 x 50 | 4 no per m ² |
| | 600 x 600 x 50 | 2 no per m ² |

SUPPLY

| | | |
|----------------------|--|-----------------|
| Units per pack | Unit | Per pack |
| | 400 x 400 x 50 | 60 |
| | 450 x 450 x 50 | 40 |
| | 600 x 600 x 50 | 20 |
| Av. pack weight (kg) | Unit | Weight |
| | 400 x 400 x 50 | 1200 |
| | 450 x 450 x 50 | 1000 |
| | 600 x 600 x 50 | 900 |
| Packaging | All packs are shrink wrapped onto pallets for fork off-load or crane off-load if necessary | |

FURTHER INFORMATION

| | |
|------------------------|---|
| Cleaning & maintenance | Cleaning and maintenance details are available on request |
| Efflorescence | Any product containing cement during its early life may exhibit a temporary white discolouration known as efflorescence. This is not a product fault and will gradually disappear with exposure to natural weathering and trafficking |
| Weathering | It should be appreciated that with all products weathering and site conditions can cause shade variation to appear across the surface of individual units. This does not in any way affect the performance of the units and any such variation will diminish over a period of time as the product matures. |
| Product evolution | Marshall's reserve the right to amend the technical information as deemed necessary and in accordance with the relevant national and international standards without notice. The evolution of new product design is continuous and information is subject to change without notice. Customers should check with the supplier to ensure that they have the latest details. |
| Contact us | For technical information on the design, specification and construction when utilising the product, contact the Technical Advisory Services Department on 0370 411 2233. |

Date created: 27 10 2023



03704 11 22 33
www.marshall's.co.uk/commercial

T: 01422 312000
F: 01422 312 943
E: grouptechnicalservices@marshall's.co.uk