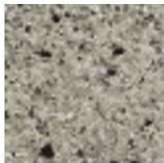


Modal X Charcoal Granite Textured



Modal X Charcoal Granite Smooth



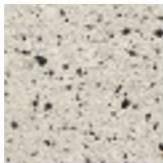
Modal X Silver Grey Granite Textured



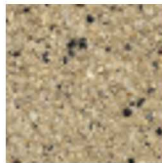
Modal X Silver Grey Granite Smooth



Modal X Light Granite Textured



Modal X Light Granite Smooth



Modal X Oatmeal Granite Textured



Modal X Oatmeal Granite Smooth

Modal X is a premium, contemporary concrete range that offers a mix of different paving formats.

- One versatile plan size
- Four colours and two textures
- Inspired by high quality natural granite
- Higher levels of design flexibility
- Manufactured in Britain using Marshall's' concrete technology

DESCRIPTION	
Appearance	Solid unit with textured/smooth surface and integral spacers with Maxi-Mix Technology
Manufacturing process	Semi dry pressed & vibrated concrete
Base raw material	Concrete
Governing manufacturing standards	All data where relevant to be established in accordance with BS EN 1339:2003
Installation standards	Laid in accordance with BS7533-4:2006
UKCA marking/DOP	https://www.marshall's.co.uk/dop

Date created: 27 10 2023



03704 11 22 33
www.marshall's.co.uk/commercial

T: 01422 312000
F: 01422 312 943
E: grouptechnicalservices@marshall's.co.uk

PHYSICAL PROPERTIES		
Dimensions (mm)	Work 399 x 399 x 65	Nominal 400 x 400 x 65
Approx unit weight (kg)	Unit 400 x 400 x 65	Weight 26
Tolerances on work dimensions (mm)	Length ±2mm, width ±2mm, thickness ±3mm	
Loading classification	We are unable to give specific loading classification as the maximum loading suitability for this product is not applicable on every size and is subject to install method. For further guidance, please contact Technical Advisory Services Department on 0370 411 2233.	
Abrasion resistance (mm)	≤ 23mm (Wide Wheel Abrasion Test)	
Durability (freeze/thaw)	≤ 1.0 kg/m² as a mean with no individual value ≥ 1.5 kg/m²	
Material density	2300 kg/m³ (typically)	
Slip/skid resistance (polished)	Mean polished skid resistance value (PSRV): > 45	
Slip/skid resistance (unpolished)	Mean unpolished skid resistance value (USRV): > 45	
Thermal conductivity (K value)	Design data as defined to BS EN 13369 : 2013	
Facing layer	4mm minimum thickness	
Bending strength	Characteristic bending strength of 5.0 MPa with no individual result less than 4.0 MPa	

SPECIFICATION	
Emission of asbestos	No content
External fire performance	Deemed to satisfy. See commission decision 2000/553/ECU
Reaction to fire	Class A1, see commission decision 2000/605/EC

SUSTAINABILITY	
Breeam	These units can achieve an “A” rated system when used in conjunction with the correct sub-base components

SITE WORKS		
Coverage	Unit 400 x 400 x 65	Coverage 6 no per m²

SUPPLY		
Units per pack	Unit 400 x 400 x 65	Per pack 48
Av. pack weight (kg)	Unit 400 x 400 x 65	Weight 1248
Packaging	All packs are shrink wrapped onto pallets for fork off-load or crane off-load if necessary	

FURTHER INFORMATION	
Cleaning & maintenance	Cleaning and maintenance details are available on request
Efflorescence	Any product containing cement during its early life may exhibit a temporary white discolouration known as efflorescence. This is not a product fault and will gradually disappear with exposure to natural weathering and trafficking
Weathering	It should be appreciated that with all products weathering and site conditions can cause shade variation to appear across the surface of individual units. This does not in any way affect the performance of the units and any such variation will diminish over a period of time as the product matures.
Product evolution	Marshall's reserve the right to amend the technical information as deemed necessary and in accordance with the relevant national and international standards without notice. The evolution of new product design is continuous and information is subject to change without notice. Customers should check with the supplier to ensure that they have the latest details.
Contact us	For technical information on the design, specification and construction when utilising the product, contact the Technical Advisory Services Department on 0370 411 2233.