

# Symphony Jointing Installation Guide



## General Information

On delivery, the product should be inspected for any damage, and the batch information should be noted in case it is needed later. If there are any issues, please report them immediately and do not commence installation.

Always test a small, discrete area of paving with the grout before full installation to ensure compatibility. Failure to test the chosen paving for suitability with the jointing compound will be the liability of the installer and not Marshalls Plc.



## Health and Safety Information

Safe working practices should be employed at all times during the construction process and all necessary Personal Protective Equipment (PPE) should be worn.



## Prior to use

**Please Note:** Paving must be laid on a full bed of mortar with suitable drainage provision through the bedding layer to the sub-base and never on a five spot bed.

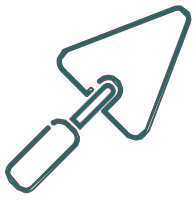
### Equipment:

- Stiff Bristle Brush
- Soft Bristle Brush
- Hose Pipe
- Marshalltown Jointer or similar tool

**During Use:** The product should be used 1 hour from exiting the vacuum pack.

**Storage after Use:** Any material left over can be stored as long as the compound is covered by at least 80mm (3 inches) of water. Product can then be stored for up to 3 months as long as the product remains fully immersed in water?

**Weather:** Minimum laying temperatures 5°C



## Prior to Installation

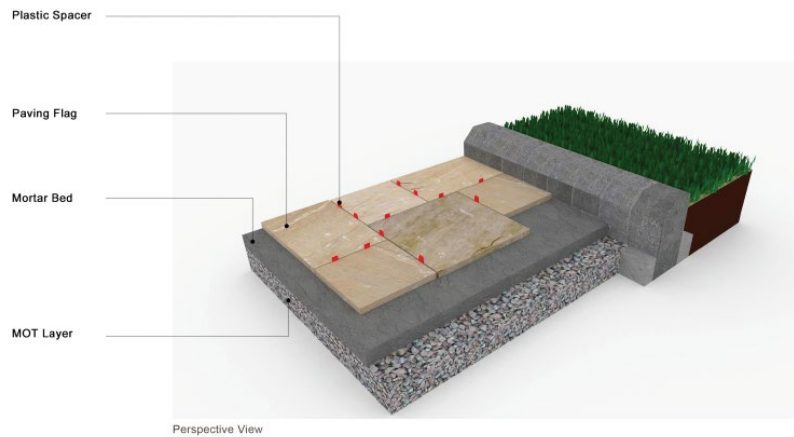
All paving must be laid on a full mortar bed and the paving unit primed with a slurry adhesive. Paving must never be installed on a spot bed.

The installation must allow for free-flowing drainage. To do this, you must install drainage ports into the mortar bed. You can do this by removing any excess mortar in the joint to the full depth of your chosen paving flag.

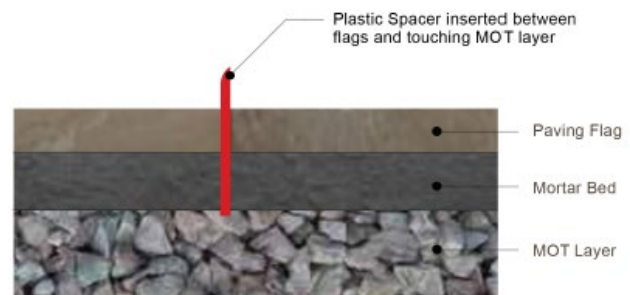
Then insert spacers every 300mm on all sides of your paving, so they are touching the top of the MOT Type 1. This process will then create an unhindered flow to the sub soil.

The image below demonstrates the use of spacers during the installation process:

Ensure drainage ports have been installed before applying Symphony Jointing (see below)



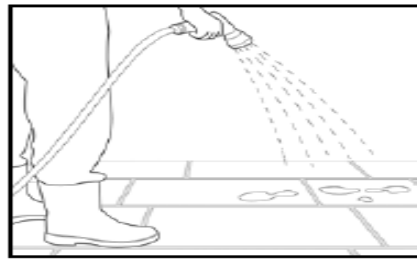
Perspective View



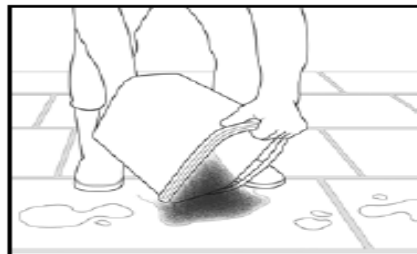
Section View

## Installation of Symphony Jointing

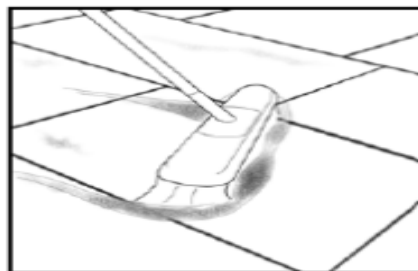
1. Thoroughly saturate the paving surface. It is impossible to over water the paved area. Failure to wet the paving correctly could result in temporary staining of the paving surface.



2. Open the tub and cut the vacuum bag open. Pour the joint compound material on the paved surface, and then begin to brush it into the joints with a stiff bristle sweeping brush and light spray of water to keep jointing and paving slightly damp.



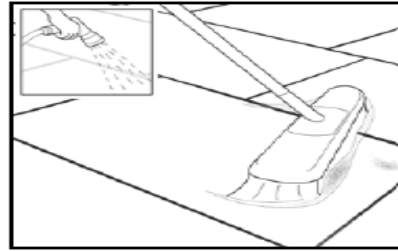
3. Brush the jointing material into the joint areas with plenty of water to allow it to flow into the joints easily. Brush the material in to the joint diagonally (at a 45° angle). Ensure that the joint void is completely filled. See the Illustration below. The jointing material must be used within one hour of pouring the vacuum pack.



4. Strike off the joint using a Marshalltown jointer or similar tool. Top up any sagging joints with more jointing material and strike again if required. On smaller joints and to get the jointing material deeper into the joint, delicately chop in with the side of a trowel or similar tool, being careful not to strike the surface of the paving. Carry out this procedure prior to striking off. If you require a smoother 'struck' finish to your joint, allow the joint to dry out a little and iron the joint using a Marshalltown jointer or similar.



- To finish the process, gently spray the surface with a wide angled spray and brush excess joint compound off the surface using a soft bristled brush.



Laying and jointing operations should be discontinued (and any open work face covered) if weather conditions are such that the performance of the paving may be jeopardised. Laying operations should not be undertaken when the temperature is below 5°C on a falling thermometer. All unfinished areas and stockpiles of materials should be covered in the advent of inclement weather to prevent saturation.



### **Curing Time**

Symphony jointing compound will be fully load bearing after 3 consecutive days of dry warm weather and humidity equal to or less than 65%.

**Please note:** Lower temperatures will lengthen the curing time and higher temperatures will accelerate the curing time. Additionally, once installed, Symphony jointing compound will not start the curing process until dry weather and the cessation of rain.

Minimum laying temperature 5°C and rising.



### **For more information**

Please contact Marshalls Group Technical Services on 0370 411 2233 or email [grouptechnicalservices@marshalls.co.uk](mailto:grouptechnicalservices@marshalls.co.uk)